

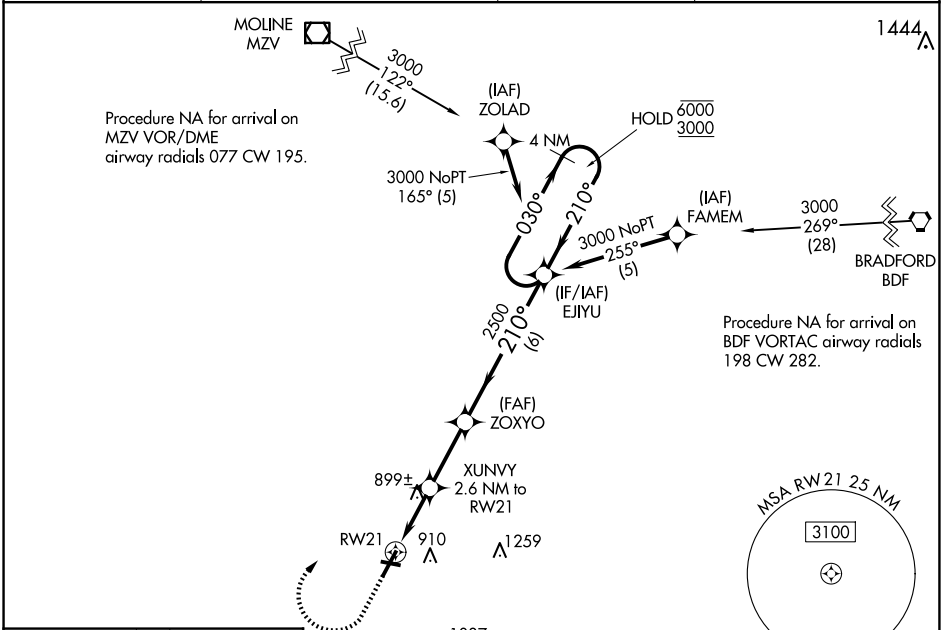
WAAS CH <b>50428</b> <b>W21A</b>	APP CRS <b>210°</b>	Rwy Idg TDZE Apt Elev	<b>5792</b> <b>764</b> <b>764</b>
--	------------------------	-----------------------------	---

# RNAV (GPS) RWY 21

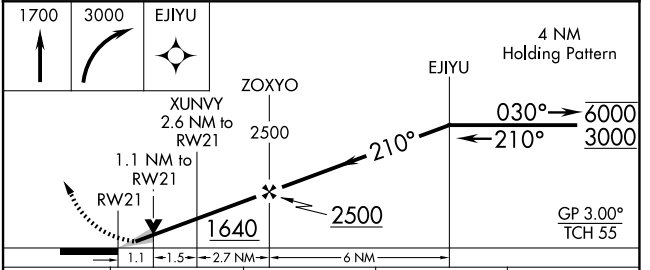
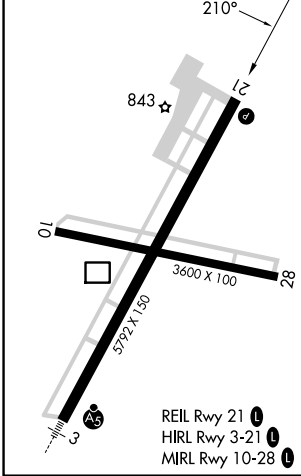
GALESBURG MUNI (GBG)

RNP APCH - GPS.		MISSED APPROACH: Climb to 1700 then climbing right turn to 3000 direct EJYU and hold.	
<p><b>▼</b> <b>▲</b> For uncompensated Baro-VNAV systems, LNAV/VNAV NA below -16°C or above 54°C.</p>			

AWOS-3 <b>118.975</b>	QUAD CITY APP CON ★ <b>133.275 257.8</b>	CLNC DEL <b>120.7</b>	UNICOM <b>123.0 (CTAF)</b>
--------------------------	---	--------------------------	-------------------------------



ELEV 764	TDZE 764
----------	----------



CATEGORY	A	B	C	D
LPV DA		964-3/4	200 (200-3/4)	
LNAV/VNAV DA		1060-7/8	296 (300-7/8)	
LNAV MDA	1160-1	396 (400-1)	1160-1 1/8	396 (400-1 1/8)
<b>C</b> CIRCLING	1220-1	456 (500-1)	1380-1 3/4 616 (700-1 3/4)	1620-2 3/4 856 (900-2 3/4)

EC-3, 20 FEB 2025 to 20 MAR 2025

EC-3, 20 FEB 2025 to 20 MAR 2025