

LOC I-POC 110.5	APP CRS 259°	Rwy Idg TDZE Apt Elev	4151 1005 1014
---------------------------	------------------------	-----------------------------	---

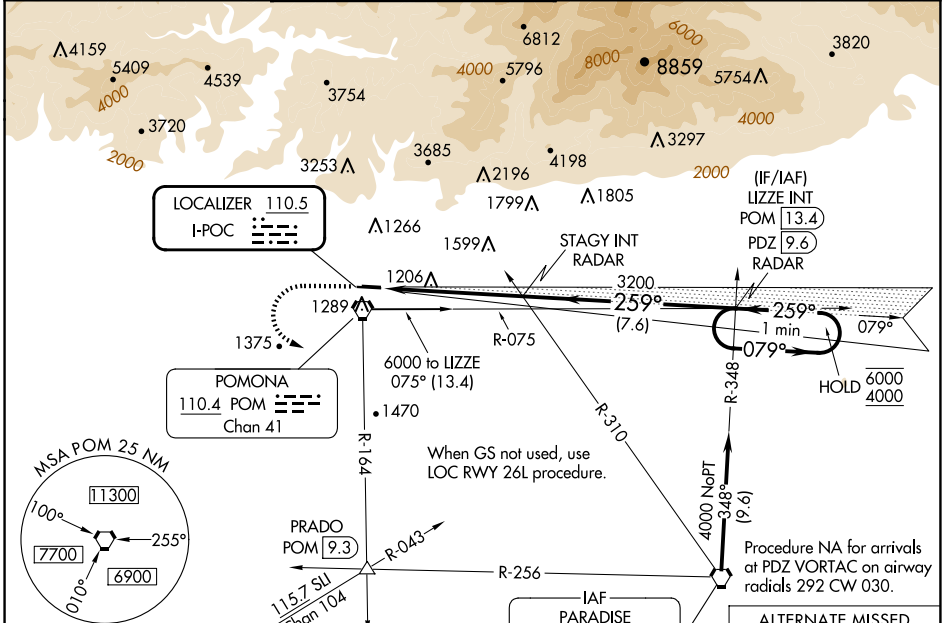
ILS RWY 26L

BRACKETT FLD (POC)

▼ Rwy 26L helicopter visibility reduction below 3/4 SM NA.
▲ When local altimeter setting not received, use Ontario Intl altimeter setting and increase DA to 1364.

MISSED APPROACH: Climb to 2100 then climbing left turn to 4000 on POM VORTAC R-164 to PRADO INT/POM 9.3 DME.

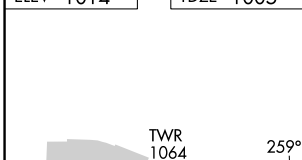
ATIS 124.4	SOCAL APP CON 125.5 349.0	BRACKETT TOWER* RWY 8R/26L RWY 8L/26R 118.2 (CTAF) 133.3	GND CON 125.0	CLNC DEL 121.875	UNICOM 122.95
----------------------	-------------------------------------	--	-------------------------	----------------------------	-------------------------



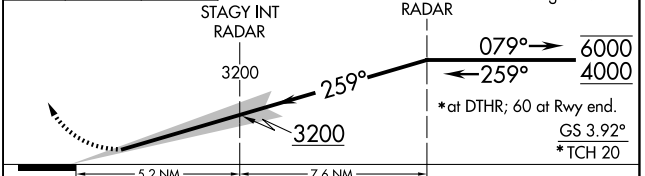
SW-3, 20 FEB 2025 to 20 MAR 2025

SW-3, 20 FEB 2025 to 20 MAR 2025

ELEV 1014	TDZE 1005
-----------	-----------



2100	4000	PRADO	VGSI and ILS glidepath not coincident (VGSI Angle 3.76/TCH 18).	LIZZE INT PDZ 9.6 RADAR	One Minute Holding Pattern
------	------	-------	---	-------------------------	----------------------------



REIL Rws 8R and 26L	MIRL Rwy 8R-26L
---------------------	-----------------

CATEGORY	A	B	C	D
S-ILS 26L	1332-1	327 (400-1)		NA