

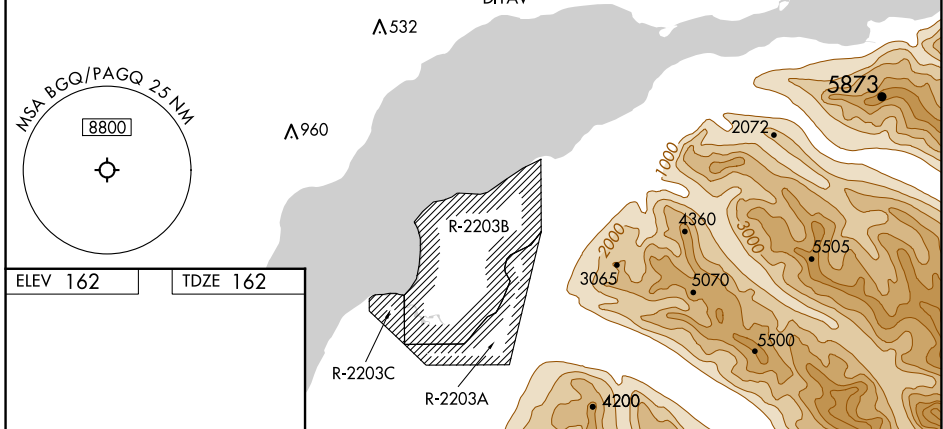
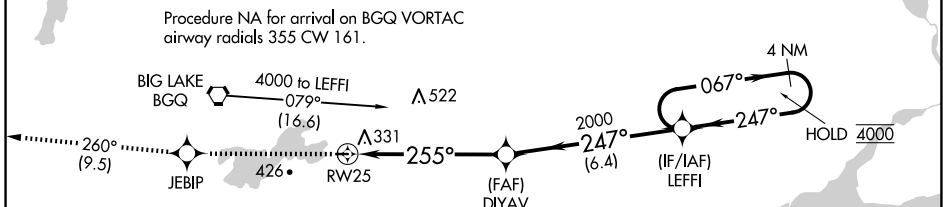
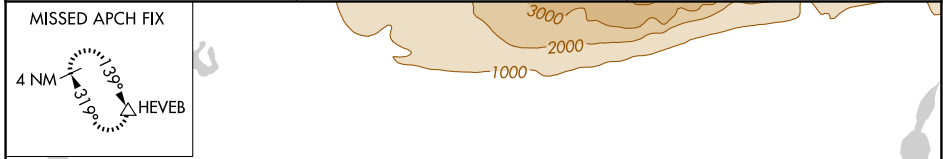
APP CRS	Rwy Idg	<b>2450</b>
<b>255°</b>	TDZE	<b>162</b>
	Apt Elev	<b>162</b>

# RNAV (GPS) RWY 25

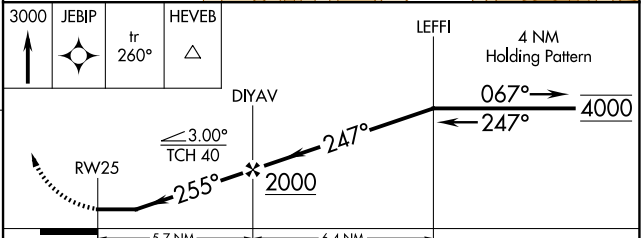
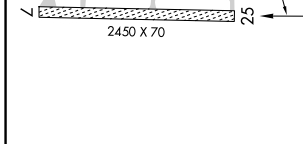
BIG LAKE (BGQ) (PAGQ)

RNP APCH.	MISSED APPROACH: Climb to 3000 direct JEBIP and on track 260° to HEVEB and hold.
<p>Procedure NA at night. Rwy 25 helicopter visibility reduction below 1 SM NA. Use Anchorage altimeter setting.</p>	

ANC ASOS <b>135.5</b>	ANCHORAGE APP CON <b>118.6</b>	CTAF <b>122.80</b>
--------------------------	-----------------------------------	-----------------------



ELEV 162	TDZE 162
----------	----------



CATEGORY	A	B	C	D
LNAV MDA	1020-1 858 (900-1)	1020-1¼ 858 (900-1¼)	1020-2½ 858 (900-2½)	NA
<input checked="" type="checkbox"/> CIRCLING	1020-1¼	858 (900-1¼)	1020-2½ 858 (900-2½)	NA

AK, 20 FEB 2025 to 17 APR 2025

AK, 20 FEB 2025 to 17 APR 2025