

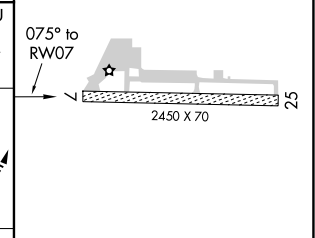
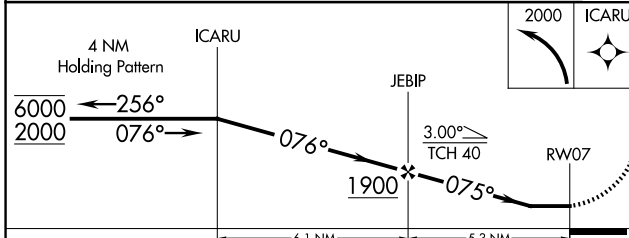
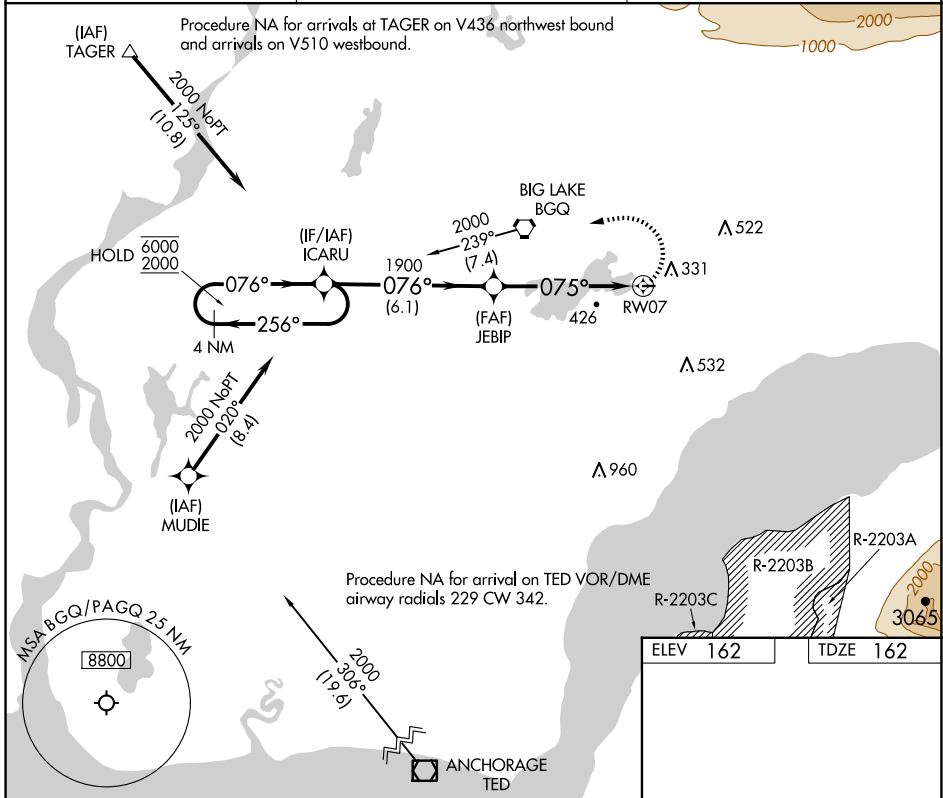
APP CRS	Rwy Idg	2450
075°	TDZE	162
	Apt Elev	162

RNAV (GPS) RWY 7

BIG LAKE (BGQ) (PAGQ)

RNP APCH.	MISSED APPROACH: Climbing left turn to 2000 direct ICARU and hold.
<p>Procedure NA at night. Rwy 7 helicopter visibility reduction below 1 SM NA. Use Anchorage altimeter setting.</p>	

ANC ASOS 135.5	ANCHORAGE APP CON 118.6	CTAF 122.80
--------------------------	-----------------------------------	-----------------------



CATEGORY	A	B	C	D
LNVA MDA	940-1 778 (800-1)	940-1¼ 778 (800-1¼)	940-2½ 778 (800-2½)	NA
CIRCLING	940-1 778 (800-1)	960-1¼ 798 (800-1¼)	980-2½ 818 (900-2½)	NA

MIRL Rwy 7-25

AK, 20 FEB 2025 to 17 APR 2025

AK, 20 FEB 2025 to 17 APR 2025