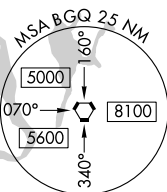
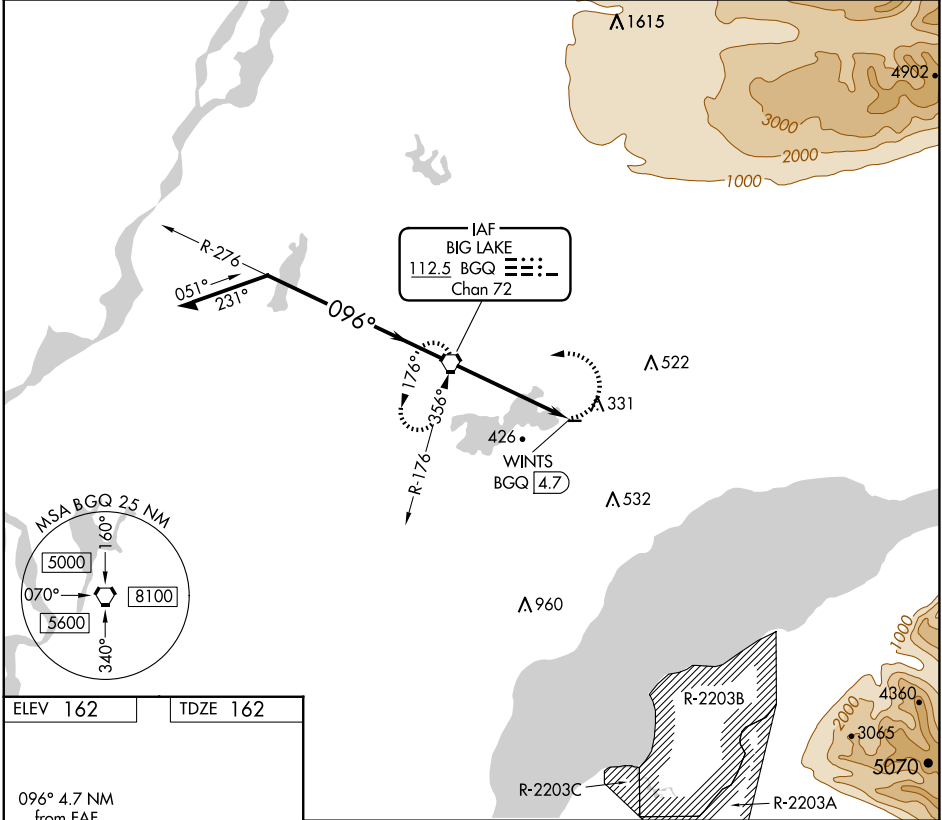


VORTAC BGQ <b>112.5</b> Chan 72	APP CRS <b>096°</b>	Rwy Idg TDZE Apt Elev	<b>2450</b> <b>162</b> <b>162</b>
---------------------------------------	------------------------	-----------------------------	---

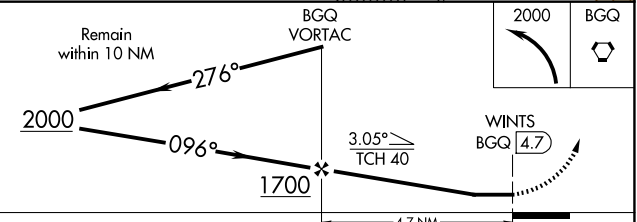
**VOR RWY 7**  
BIG LAKE (BGQ) (PAGQ)

**NA** Procedure NA at night. Rwy 7 helicopter visibility reduction below 1 SM NA. Use Anchorage altimeter setting. MISSED APPROACH: Climbing left turn to 2000 direct BGQ VORTAC and hold, climb-in-hold to 2000.

ANC ASOS <b>135.5</b>	ANCHORAGE APP CON <b>118.6</b>	CTAF <b>122.80</b>
--------------------------	-----------------------------------	-----------------------



ELEV 162	TDZE 162
----------	----------



MIRL Rwy 7-25

FAF to MAP 4.7 NM

Knots	60	90	120	150	180
Min:Sec	4:42	3:08	2:21	1:53	1:34

CATEGORY	A	B	C	D
S-7	980-1 818 (900-1)	980-1¼ 818 (900-1¼)	980-2½ 818 (900-2½)	NA
<input checked="" type="checkbox"/> CIRCLING	980-1¼	818 (900-1¼)	980-2½ 818 (900-2½)	NA

AK, 20 FEB 2025 to 17 APR 2025

AK, 20 FEB 2025 to 17 APR 2025