

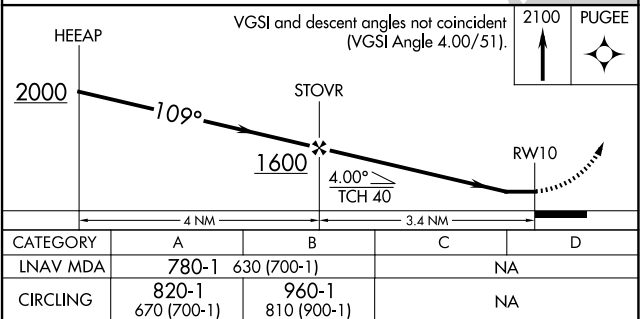
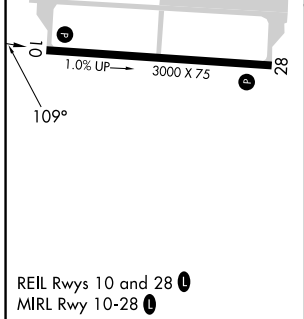
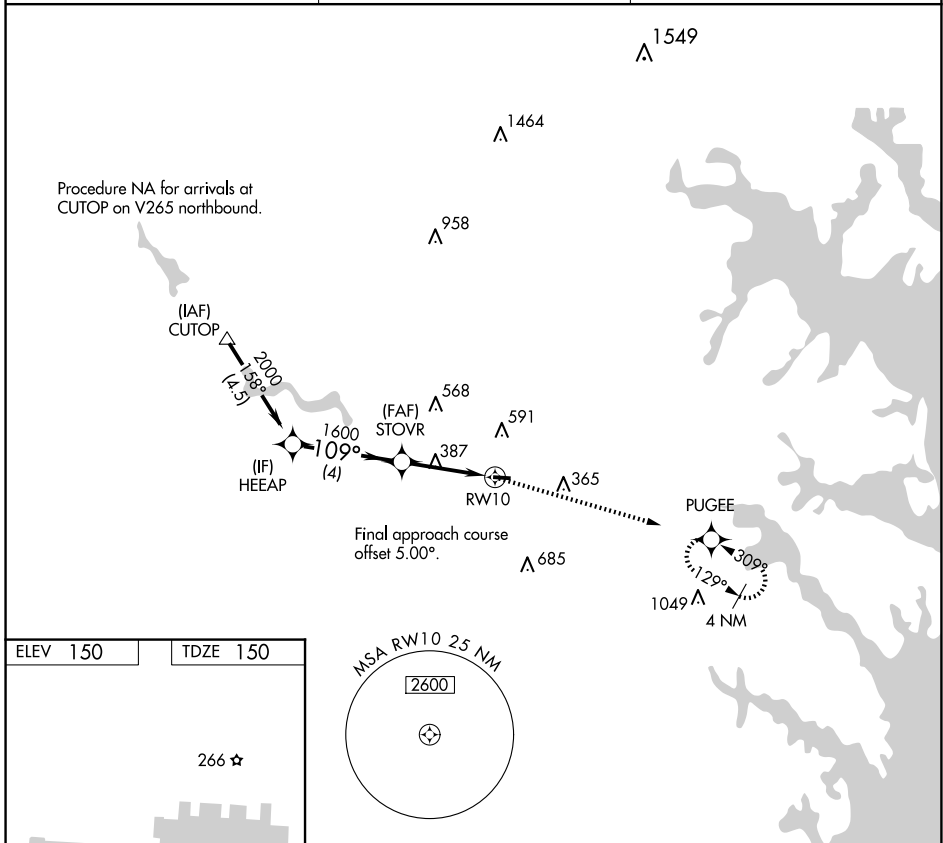
APP CRS	Rwy Idg	<b>3000</b>
<b>109°</b>	TDZE	<b>150</b>
	Apt Elev	<b>150</b>

# RNAV (GPS) RWY 10

TIPTON (FME)

RNP APCH - GPS.		MISSED APPROACH: Climb to 2100 direct PUGEE and hold.
▼	Rwy 10 helicopter visibility reduction below 1 SM NA.	
▲	Straight-in Rwy 10 NA at night, Circling Rwy 10 NA at night.	

AWOS-3 <b>123.925</b>	POTOMAC APP CON <b>119.7 290.475</b>	UNICOM <b>123.05 (CTAF) 0</b>
--------------------------	---	----------------------------------



NE-3, 20 FEB 2025 to 20 MAR 2025

NE-3, 20 FEB 2025 to 20 MAR 2025