

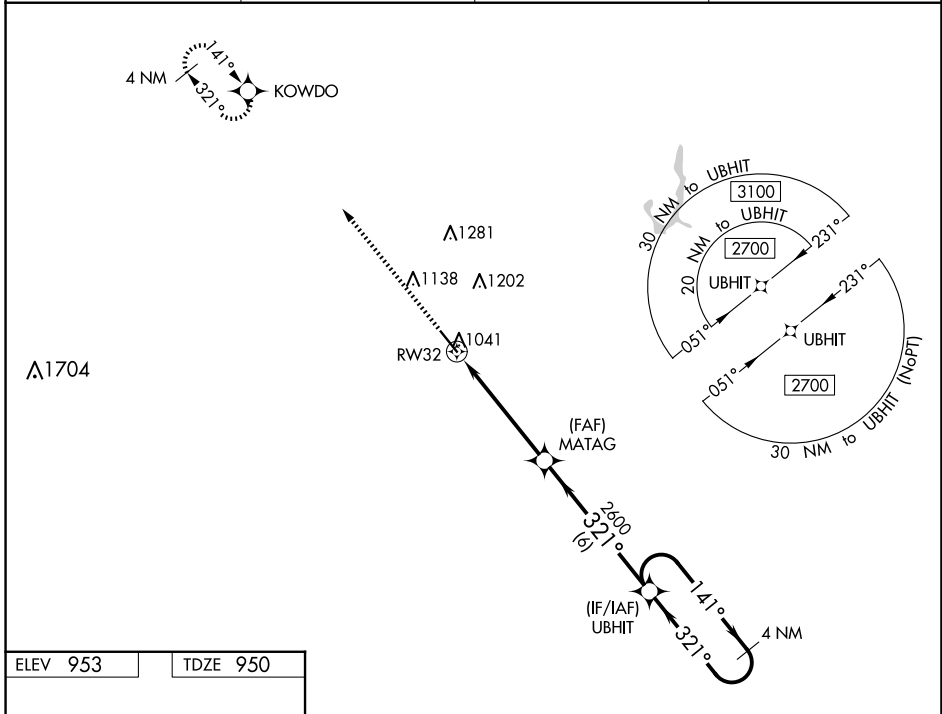
WAAS CH 99702 W32A	APP CRS 321°	Rwy Idg TDZE Apt Elev	5600 950 953
--	------------------------	-----------------------------	---

RNAV (GPS) RWY 32

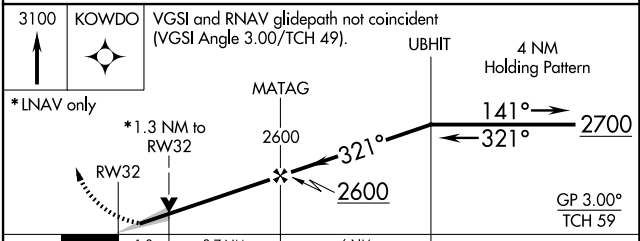
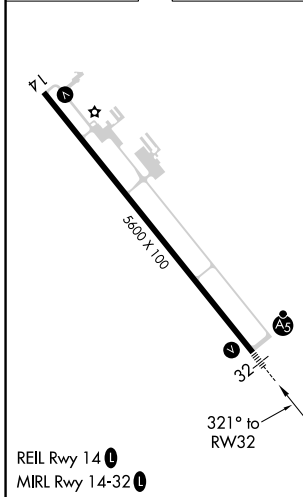
NEWTON MUNI-EARL JOHNSON FLD (TNU)

<p>⚠ For uncompensated Baro-VNAV systems, LNAV/VNAV NA below -19°C (2°F) or above 54°C (130°F). DME/DME RNP-0.3 NA. ⚠ For inop MALS, increase LNAV/VNAV all Cats visibility to 3/4 SM.</p>	<p>MALS</p>	<p>MISSED APPROACH: Climb to 3100 direct KOWDO and hold.</p>
---	-------------	--

AWOS-3 132.275	DES MOINES APP CON 123.9 307.15	CLNC DEL 126.3	UNICOM 122.8 (CTAF)
--------------------------	---	--------------------------	-------------------------------



ELEV 953	TDZE 950
----------	----------



CATEGORY	A	B	C	D
LPV DA	1150-1/2		200 (200-1/2)	
LNAV/VNAV DA	1202-1/2		252 (300-1/2)	
LNAV MDA	1400-1/2 450 (500-1/2)		1400-7/8 450 (500-7/8)	
<input checked="" type="checkbox"/> CIRCLING	1420-1 467 (500-1)	1440-1 487 (500-1)	1520-1 1/2 567 (600-1 1/2)	1600-2 647 (700-2)