

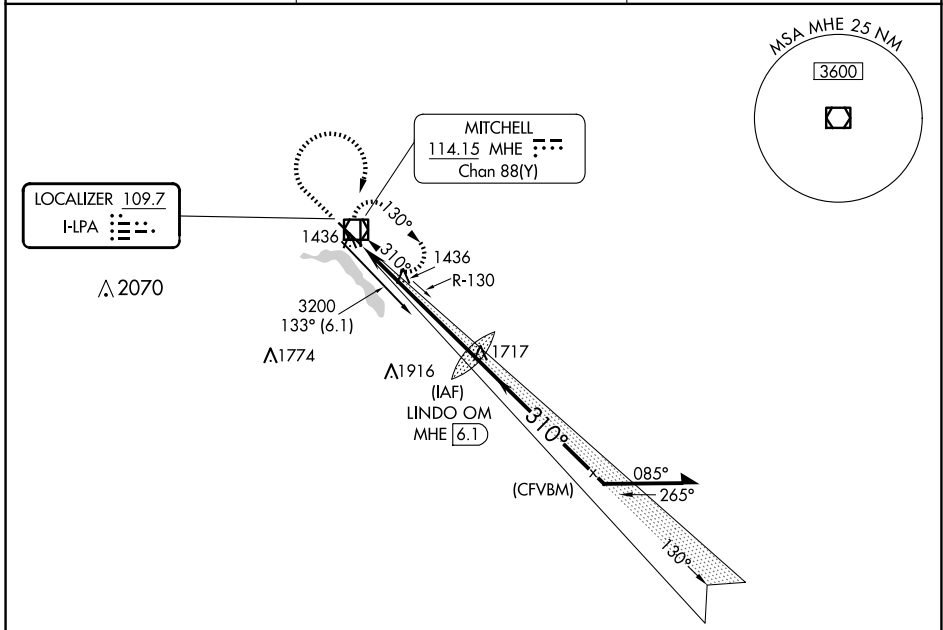
LOC I-LPA <b>109.7</b>	APP CRS <b>310°</b>	Rwy Idg TDZE Apt Elev	<b>6701</b> <b>1304</b> <b>1304</b>
---------------------------	------------------------	-----------------------------	---

# ILS or LOC RWY 31

MITCHELL MUNI (MHE)

DME required.	MALSR	MISSED APPROACH: Climb to 3200 then right turn direct MHE VOR/DME and hold.
Autopilot coupled approach NA below 2174 MSL. For inop ALS, increase S-LOC 31 Cats C and D visibility to 1 1/2 SM.		

ASOS <b>124.175</b>	MINNEAPOLIS CENTER <b>126.25 339.8</b>	UNICOM <b>122.8 (CTAF) 0</b>
------------------------	---	---------------------------------



ELEV 1304	TDZE 1304
HIRL Rwy 13-31 MIRL Rwy 18-36 REIL Rwys 13 and 18 FAF to MAP 5.6 NM	
Knots	60 90 120 150 180
Min:Sec	5:36 3:44 2:48 2:14 1:52

3200	MHE	LINDO OM MHE 6.1	VGSI and ILS glidepath not coincident (VGSI Angle 3.00/TCH 61)	
*LOC only.			Remain within 10 NM	
	*MHE 1.6	3182	130°	3200
			310°	3200
				GS 3.00° TCH 57
CATEGORY	A	B	C	D
S-ILS 31	1554-1/2		250 (300-1/2)	
S-LOC 31	1700-1/2	396 (400-1/2)	1700-3/4	396 (400-3/4)
CIRCLING	1740-1 436 (500-1)	1760-1 456 (500-1)	1820-1 1/2 516 (600-1 1/2)	1860-2 556 (600-2)

NC-1, 20 FEB 2025 to 20 MAR 2025

NC-1, 20 FEB 2025 to 20 MAR 2025