

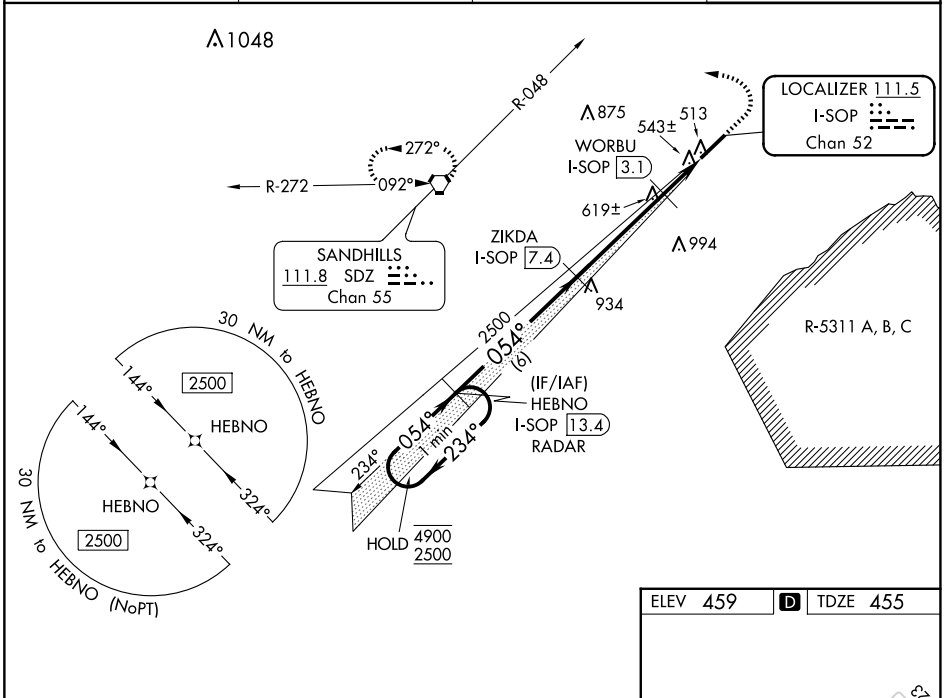
LOC/DME I-SOP	APP CRS	Rwy Idg	5502
111.5	054°	TDZE	455
Chan 52		Apt Elev	459

ILS Y or LOC Y RWY 5

MOORE COUNTY(SOP)

DME required. RNAV-1 GPS or RADAR required.		MALSR	MISSED APPROACH: Climb to 1400 then climbing left turn to 3300 on heading 300° and on SDZ VORTAC R-048 to SDZ VORTAC and hold.

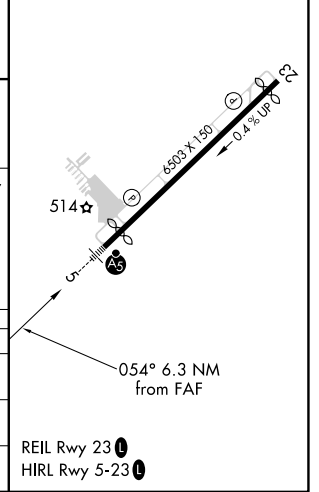
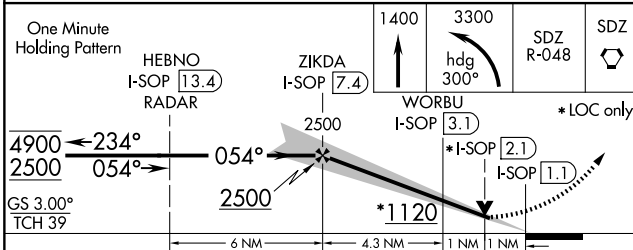
AWOS-3PT 127.575	FAYETTEVILLE APP CON 127.8 343.725	CLNC DEL 127.0	UNICOM 123.05(CTAF)
----------------------------	--	--------------------------	-------------------------------



SE-2, 20 FEB 2025 to 20 MAR 2025

SE-2, 20 FEB 2025 to 20 MAR 2025

ELEV 459	D TDZE 455
----------	-------------------



CATEGORY	A	B	C	D
S-ILS 5	655-1/2		200 (200-1/2)	
S-LOC 5	800-1/2	345 (400-1/2)	800-5/8	345 (400-5/8)
C CIRCLING	880-1	920-1	1100-1 1/4	1360-3
	421 (500-1)	461 (500-1)	641 (700-1 3/4)	901 (1000-3)

REIL Rwy 23
HIRL Rwy 5-23