

WAAS CH 42726 W23A	APP CRS 234°	Rwy Idg TDZE Apt Elev	5722 443 459
--	------------------------	-----------------------------	---

RNAV (GPS) RWY 23

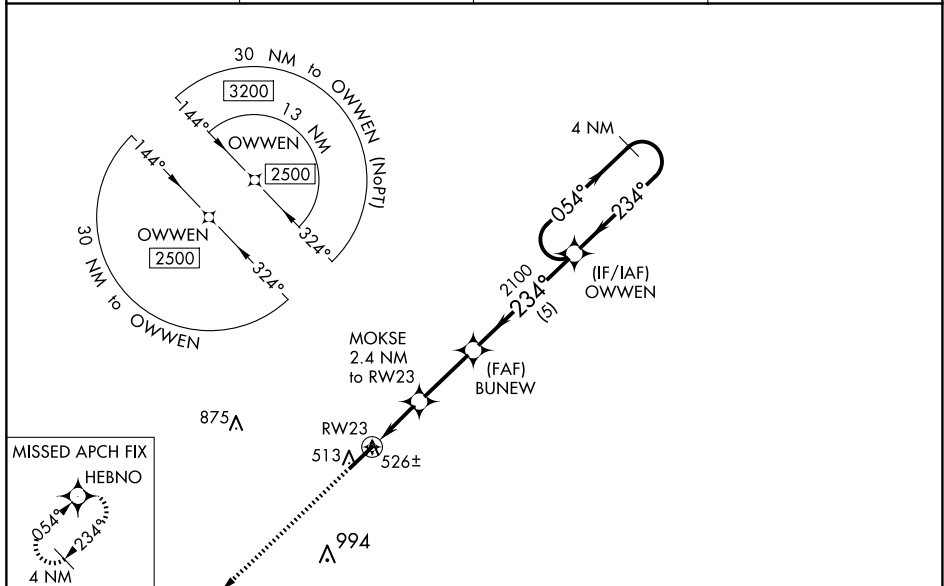
MOORE COUNTY (SOP)

RNP APCH.

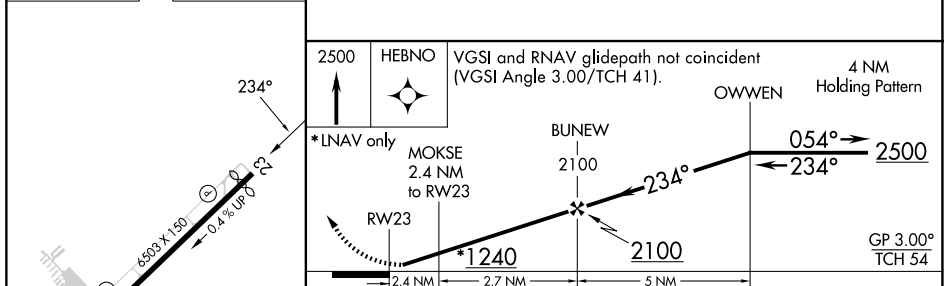
▼ Baro-VNAV NA when using Sanford altimeter setting. For uncompensated Baro-VNAV systems, LNAV/VNAV NA below -15°C or above 54°C. When local altimeter setting not received, use Sanford altimeter setting and increase all DA 88 feet and all MDA 100 feet; increase LNAV Cats C/D visibility 3/8 mile and Circling Cat C visibility 1/2 mile. Rwy 23 helicopter visibility reduction below 3/4 SM NA.

MISSED APPROACH:
Climb to 2500 direct
HEBNO and hold.

AWOS-3PT 127.575	FAYETTEVILLE APP CON 127.8 343.725	CLNC DEL 127.0	UNICOM 123.05 (CTAF) 0
----------------------------	--	--------------------------	----------------------------------



ELEV 459	D	TDZE 443
-----------------	----------	-----------------



2500 HEBNO VGSi and RNAV glidepath not coincident (VGSi Angle 3.00/TCH 41). 4 NM Holding Pattern

*LNAV only MOKSE 2.4 NM to RW23 BUNEW 2100 OWWEN 2500

RW23 513 1240 2100 2500

GP 3.00% TCH 54

CATEGORY	A	B	C	D
LPV DA		693-1	250 (300-1)	
LNAV/VNAV DA		699-1	256 (300-1)	
LNAV MDA		780-1	337 (400-1)	
C CIRCLING	880-1 421 (500-1)	920-1 461 (500-1)	1100-1 3/4 641 (700-1 3/4)	1360-3 901 (1000-3)

REIL Rwy 23 0
HIRL Rwy 5-23 0

SE-2, 20 FEB 2025 to 20 MAR 2025

SE-2, 20 FEB 2025 to 20 MAR 2025