

LOC I-MHK 111.3	APP CRS 036°	Rwy Idg TDZE Apt Elev	7030 1057 1066
---------------------------	------------------------	-----------------------------	-------------------------------------------

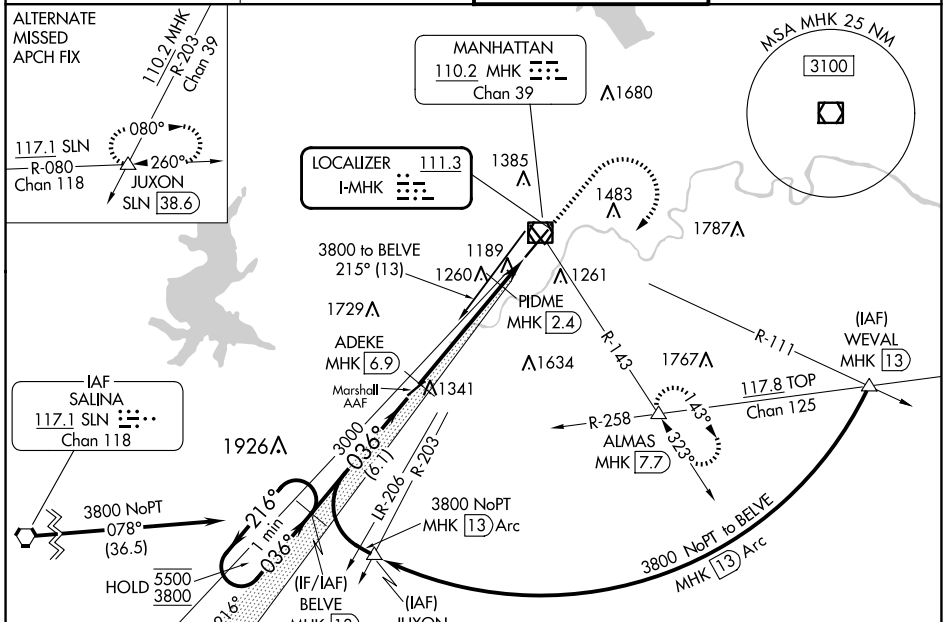
ILS or LOC RWY 3

MANHATTAN RGNL (MHK)

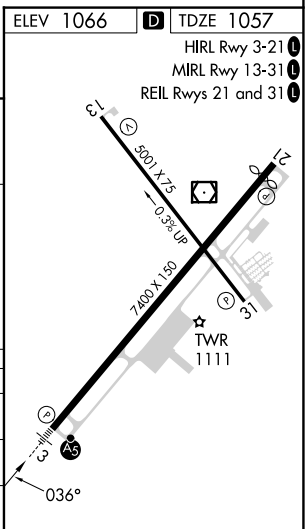
DME required.

MAJORS
MISSED APPROACH: Climb to 2200 then climbing right turn to 3000 on MHK VOR/DME R-143 to ALMAS INT/MHK 7.7 DME and hold.

ASOS 119.075	MARSHALL AAF GCA* 121.25 254.35	MANHATTAN TOWER* 118.55 (CTAF)	GND CON 121.85
------------------------	-------------------------------------------	------------------------------------------	--------------------------



One Minute Holding Pattern	VGSI and ILS glidepath not coincident (VGSI Angle 3.00/TCH 50).			
	BELVE MHK 13	ADEKE MHK 6.9	PIDME MHK 2.4	ALMAS
5500 ← 216°	3800 → 036°	3000	3000	MHK 1
GS 3.00° TCH 46	6.1 NM	4.6 NM	1.4 NM	
CATEGORY	A	B	C	D
S-ILS 3	1257-½		200 (200-½)	
S-LOC 3	1440-½	383 (400-½)	1440-⅝	383 (400-⅝)
CIRCLING	1540-1 474 (500-1)	1620-1 554 (600-1)	1920-2½ 854 (900-2½)	1920-2¾ 854 (900-2¾)



NC-2, 20 FEB 2025 to 20 MAR 2025

NC-2, 20 FEB 2025 to 20 MAR 2025