

WAAS CH 73018 W03A	APP CRS 036°	Rwy Idg TDZE Apt Elev	7030 1057 1066
----------------------------------------	------------------------	-----------------------------	-------------------------------------------

RNAV (GPS) RWY 3

MANHATTAN RGNL (MHK)

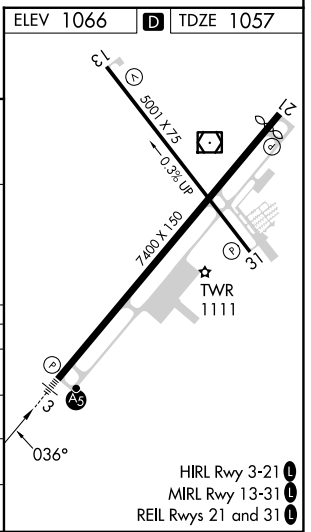
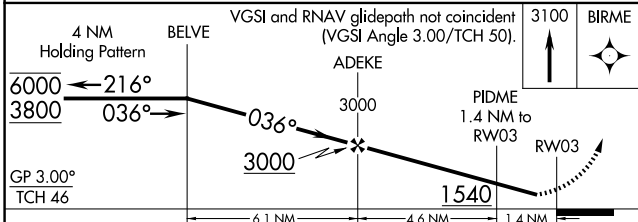
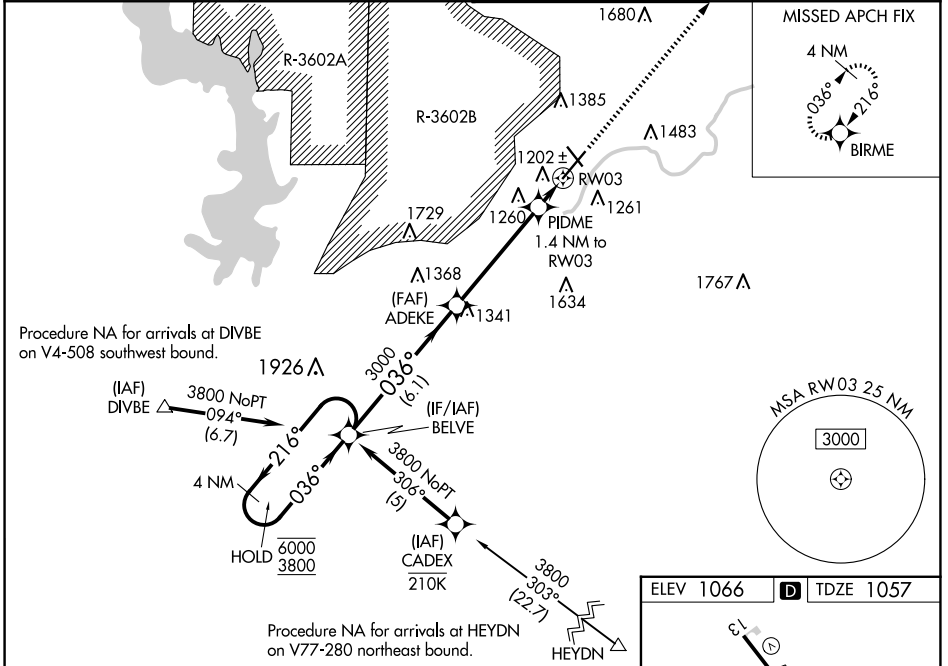
RNP APCH - GPS.

⚠ Circling NA northwest of Rwy 3-21. Rwy 3 helicopter visibility reduction below 3/4 SM NA. Inop table does not apply to LPV all Cats. For uncompensated Baro-VNAV systems, LNAV/VNAV NA below -20°C or above 54°C. For inop ALS, increase LNAV/VNAV all Cats visibility to 1 1/2 SM, increase LNAV Cats A/B visibility to 1 SM and LNAV Cats C/D visibility to 1 1/2 SM.

MALSR

MISSED APPROACH: Climb to 3100 direct BIRME and hold.

ASOS 119.075	MARSHALL AAF GCA* 121.25 254.35	MANHATTAN TOWER* 118.55 (CTAF) 0	GND CON 121.85
------------------------	-------------------------------------------	--------------------------------------------	--------------------------



CATEGORY	A	B	C	D
LPV DA		1257-1/2	200 (200-1/2)	
LNAV/VNAV DA		1441-3/4	384 (400-3/4)	
LNAV MDA		1460-3/4	403 (400-3/4)	
CIRCLING	1540-1 474 (500-1)	1620-1 554 (600-1)	1920-2 1/2 854 (900-2 1/2)	1920-2 3/4 854 (900-2 3/4)

NC-2, 20 FEB 2025 to 20 MAR 2025

NC-2, 20 FEB 2025 to 20 MAR 2025