

LOC I-HSP 108.7	APP CRS 247°	Rwy Idg 5600 TDZE 3773 Apt Elev 3793
---------------------------	------------------------	---

ILS or LOC RWY 25

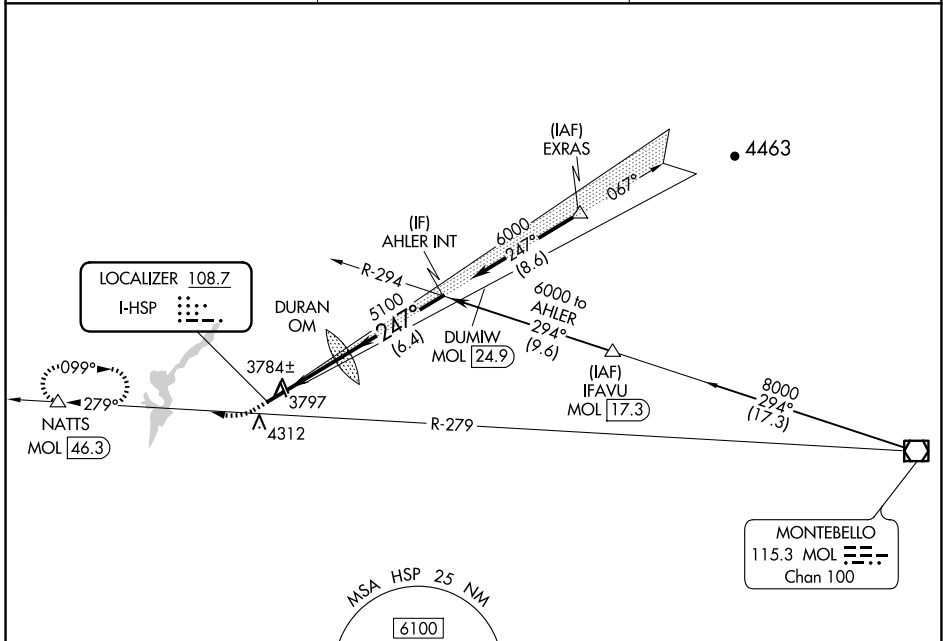
INGALLS FLD (HSP)

DME required.

▼ Circling to Rwy 7 NA at night.
▲ NA Circling NA southeast of Rwy 7-25.

MISSED APPROACH: Climb to 4360, then climbing right turn to 6200 on heading 270° and MOL R-279 to NATTS/MOL 46.3 DME and hold. (DME required).

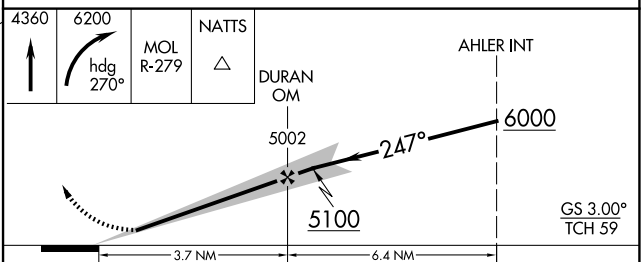
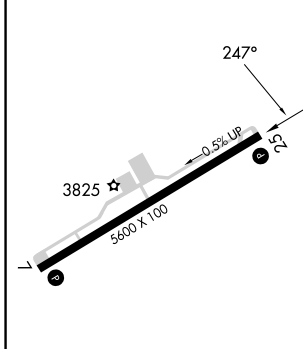
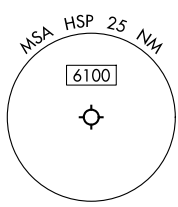
AWOS-3 118.8	WASHINGTON CENTER 134.4 353.9	UNICOM 123.0 (CTAF) 0
------------------------	---	---------------------------------



NE-3, 20 FEB 2025 to 20 MAR 2025

NE-3, 20 FEB 2025 to 20 MAR 2025

ELEV 3793	TDZE 3773
-----------	-----------



CATEGORY	A	B	C	D
S-ILS 25	4073-7/8 300 (300-7/8)			
S-LOC 25	4240-1	467 (500-1)	4240-1 3/8	467 (500-1 3/8)
<input checked="" type="checkbox"/> CIRCLING	4440-1 647 (700-1)	4480-1 687 (700-1)	4480-2 687 (700-2)	4480-2 1/4 687 (700-2 1/4)

REIL Rwy 25 **0**
HIRL Rwy 7-25 **0**

FAF to MAP 3.7 NM

Knots	60	90	120	150	180
Min:Sec	3:42	2:28	1:51	1:29	1:14