

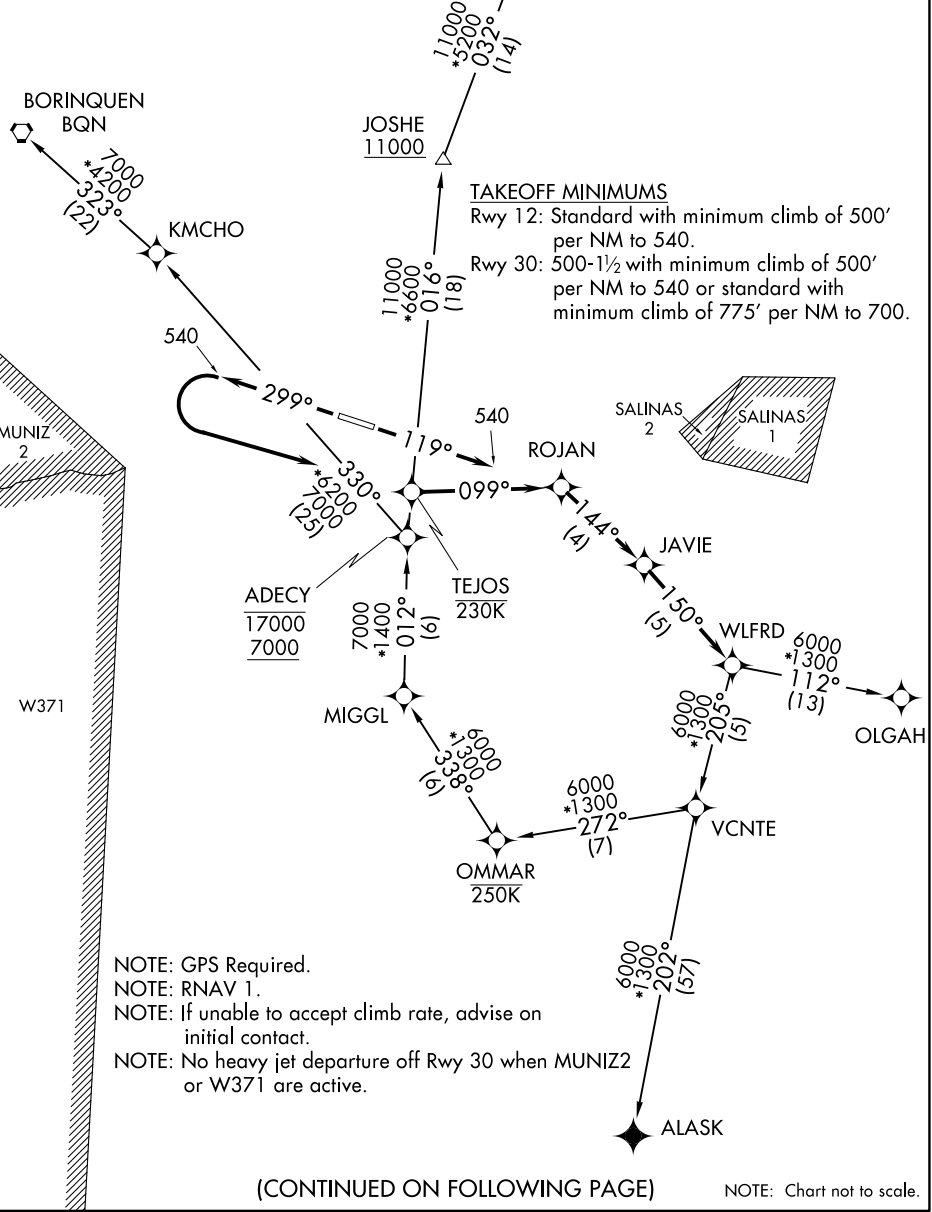
# WLFRD TWO DEPARTURE (RNAV)

AL-5248 (FAA)

MERCEDITA (PSE)(TJPS)  
PONCE, PUERTO RICO

CLNC DEL  
121.9  
CTAF  
122.7  
SAN JUAN CENTER  
118.75 269.0

**TOP ALTITUDE:  
ASSIGNED BY ATC**



NOTE: GPS Required.  
 NOTE: RNAV 1.  
 NOTE: If unable to accept climb rate, advise on initial contact.  
 NOTE: No heavy jet departure off Rwy 30 when MUNIZ2 or W371 are active.

(CONTINUED ON FOLLOWING PAGE)

NOTE: Chart not to scale.

SE-3, 20 FEB 2025 to 20 MAR 2025

SE-3, 20 FEB 2025 to 20 MAR 2025

# WLFRD TWO DEPARTURE (RNAV)

# WLF RD TWO DEPARTURE (RNAV)



## DEPARTURE ROUTE DESCRIPTION

TAKEOFF RUNWAY 12: Climb heading 119° to 540, then direct ROJAN, then as depicted to WLF RD, thence. . . .

TAKEOFF RUNWAY 30: Climb heading 299° to 540, then left turn direct TEJOS, then on track 099° to ROJAN, then as depicted to WLF RD, thence. . . .

. . . . on assigned transition, maintain altitude assigned by ATC. Expect clearance to FL280, or requested altitude if lower, ten minutes after departure.

- ALASK TRANSITION (WLF RD2.ALASK)
- BORINQUEN TRANSITION (WLF RD2.BQN)
- DORADO TRANSITION (WLF RD2.DDP)
- OLGAH TRANSITION (WLF RD2.OLGAH)

SE-3, 20 FEB 2025 to 20 MAR 2025

SE-3, 20 FEB 2025 to 20 MAR 2025