

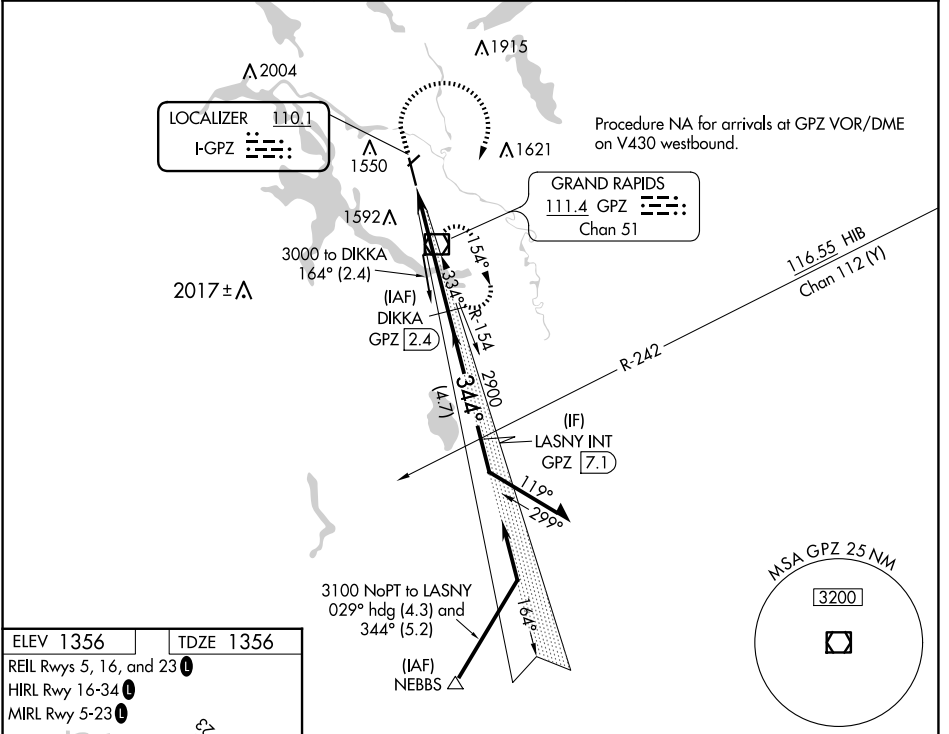
LOC I-GPZ 110.1	APP CRS 344°	Rwy Idg 5756 TDZE 1356 Apt Elev 1356
---------------------------	------------------------	---

ILS or LOC RWY 34

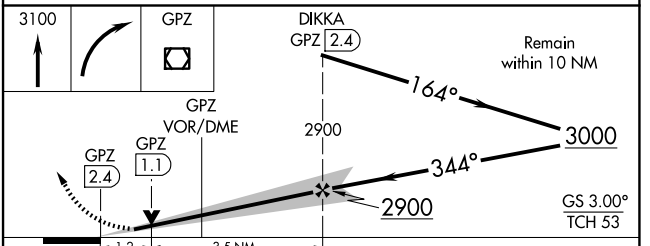
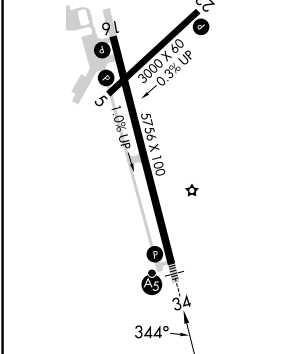
GRAND RAPIDS/ITASCA COUNTY-GORDON NEWSTROM FLD (GPZ)

DME required for LOC only.		MALSR	MISSED APPROACH: Climb to 3100 then right turn direct GPZ VOR/DME and hold.
▼	Circling to Rwy 5, 23 NA at night.		
▲	Circling NA for Cat D east of Rwy 16-34.		

AWOS-3PT 118.425	MINNEAPOLIS CENTER 127.9 281.45	UNICOM 122.8 (CTAF)
----------------------------	---	-------------------------------



ELEV 1356	TDZE 1356
REIL Rws 5, 16, and 23	
HIRL Rwy 16-34	
MIRL Rwy 5-23	



CATEGORY	A	B	C	D
S-ILS 34	1556-½ 200 (200-½)			
S-LOC 34	1800-½ 444 (500-½)	1800-¾ 444 (500-¾)		
CIRCLING	1900-1 544 (600-1)	1900-1½ 544 (600-1½)	1960-2 604 (700-2)	

NC-1, 20 FEB 2025 to 20 MAR 2025

NC-1, 20 FEB 2025 to 20 MAR 2025