

VOR/DME HUO 116.1 Chan 108	APP CRS 080°	Rwy Idg TDZE Apt Elev	3664 359 370
--	------------------------	-----------------------------	---

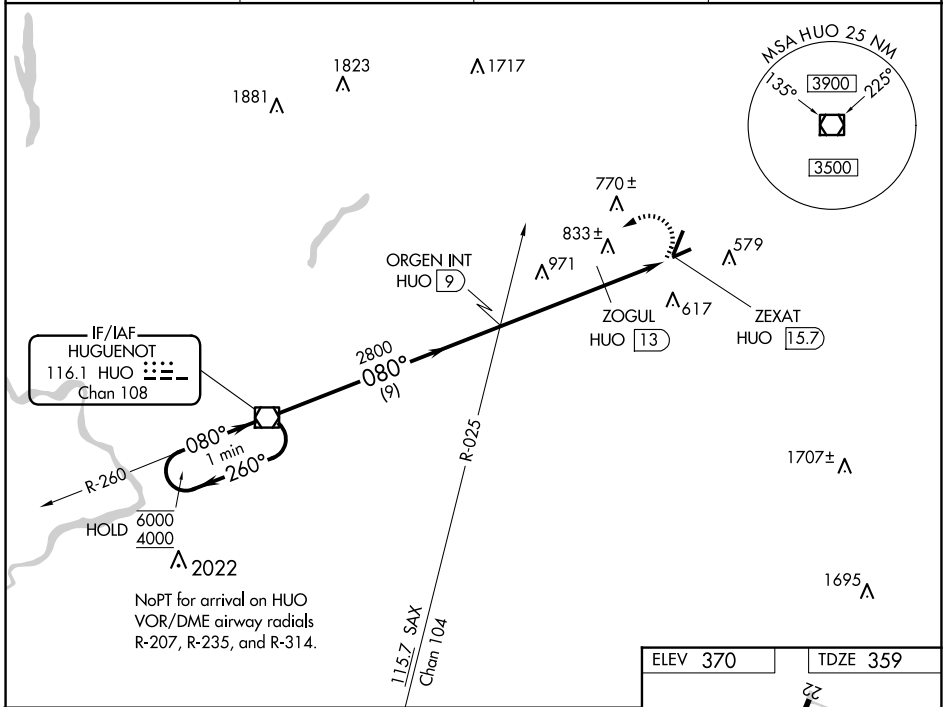
VOR RWY 8

ORANGE COUNTY (MGJ)

▼ Rwy 8 helicopter visibility reduction below 3/4 SM NA.
▲ Straight-in Rwy 8 NA at night, Circling Rwy 8, 22, 26 NA at night.

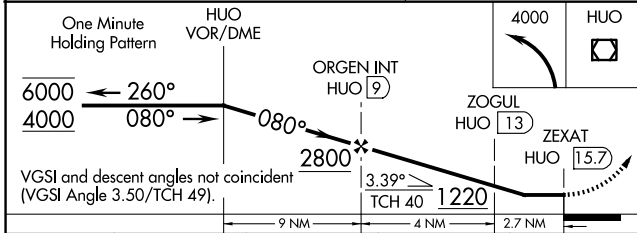
MISSED APPROACH: Climbing left turn to 4000 direct HUO VOR/DME and hold.

ASOS 119.275	NEW YORK APP CON 132.75 363.1	CLNC DEL 123.85	AUNICOM 122.725 (CTAF) 0
------------------------	---	---------------------------	------------------------------------

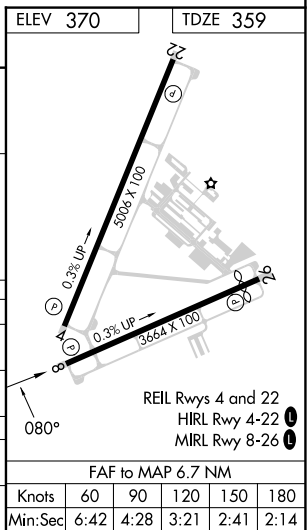


NE-2, 20 FEB 2025 to 20 MAR 2025

NE-2, 20 FEB 2025 to 20 MAR 2025



One Minute Holding Pattern		HUO VOR/DME		4000	HUO
6000 ← 260°		→ 080°		ORGEN INT HUO 9	ZOGUL HUO 13
4000		2800			
VGSI and descent angles not coincident (VGSI Angle 3.50/TCH 49).		3.39°		TCH 40 1220	
		9 NM		4 NM	
				2.7 NM	
CATEGORY	A	B	C	D	
S-8	1220-1 861 (900-1)	1220-1¼ 861 (900-1¼)	1220-2½ 861 (900-2½)	1220-2¾ 861 (900-2¾)	
C CIRCLING	1220-1¼	850 (900-1¼)	1220-2½ 850 (900-2½)	1220-2¾ 850 (900-2¾)	
ZOGUL MINIMUMS					
S-8	1160-1 801 (800-1)	1160-1¼ 801 (800-1¼)	1160-2½ 801 (800-2½)	1160-2¾ 801 (800-2¾)	
C CIRCLING	1200-1¼	830 (900-1¼)	1200-2½ 830 (900-2½)	1220-2¾ 850 (900-2¾)	



ELEV 370	TDZE 359
FAF to MAP 6.7 NM	
Knots	60 90 120 150 180
Min:Sec	6:42 4:28 3:21 2:41 2:14