

VOR/DME JBR 115.85 Chan 105(Y)	APP CRS 227°	Rwy Idg TDZE Apt Elev	6200 262 262
--	------------------------	-----------------------------	---

VOR RWY 23

JONESBORO MUNI (JBR)

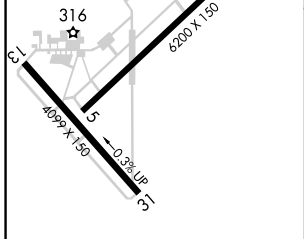
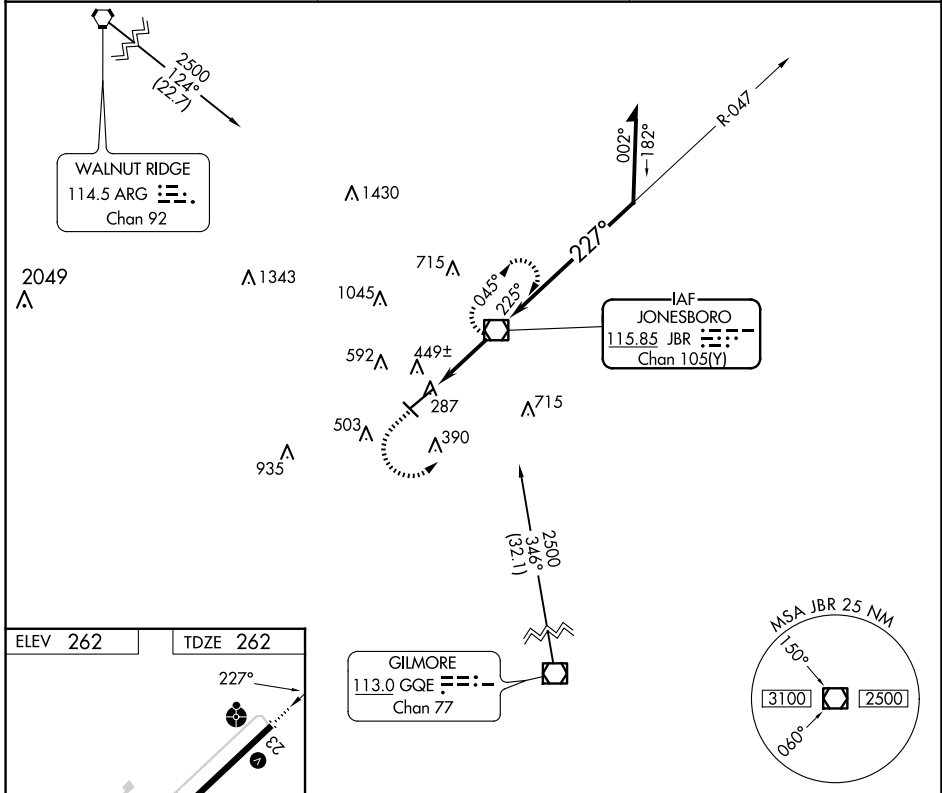
⚠ Circling Rwy 31 NA at night. Circling NA northwest of Rwy 5-23.
 ⚠ Rwy 23 helicopter visibility reduction below 3/4 SM NA. When local altimeter not received, use Walnut Ridge altimeter setting and increase all MDAs 60 feet and S-23 Cat C/D visibility 1/8 SM and Circling Cat C 1/2 SM.

ODALS

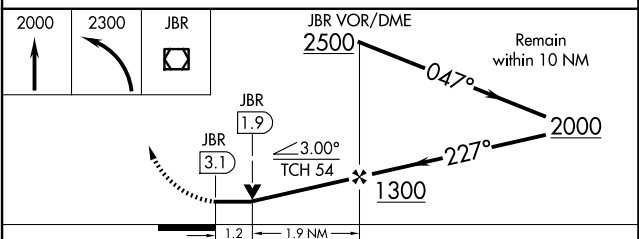


MISSED APPROACH: Climb to 2000 then climbing left turn to 2300 direct JBR VOR/DME and hold.

ASOS 118.525	MEMPHIS CENTER 120.075 289.4	UNICOM 123.0 (CTAF)
------------------------	--	-------------------------------



ELEV 262	TDZE 262
MIRL Rwy 5-23 and 13-31	
FAF to MAP 3.1 NM	
Knots	60 90 120 150 180
Min:Sec	3:06 2:04 1:33 1:14 1:02



CATEGORY	A	B	C	D
S-23	700-3/4	438 (500-3/4)	700-1 1/8	438 (500-1 1/8)
CIRCLING	740-1	478 (500-1)	820-1 1/2	1080-2 3/4
			558 (600-1 1/2)	818 (900-2 3/4)

SC-1, 20 FEB 2025 to 20 MAR 2025

SC-1, 20 FEB 2025 to 20 MAR 2025