

LOC I-DRT <b>111.9</b> Chan <b>56</b>	APP CRS <b>132°</b>	Rwy Idg <b>6000</b> TDZE <b>1002</b> Apt Elev <b>1002</b>
---------------------------------------------	------------------------	-----------------------------------------------------------------

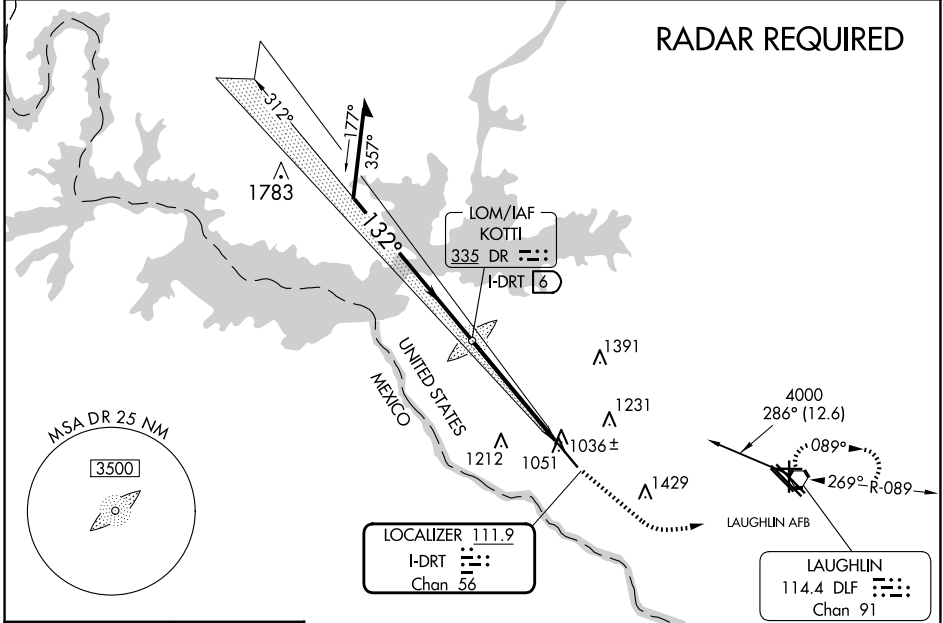
# ILS or LOC RWY 13

DEL RIO INTL (DRT)

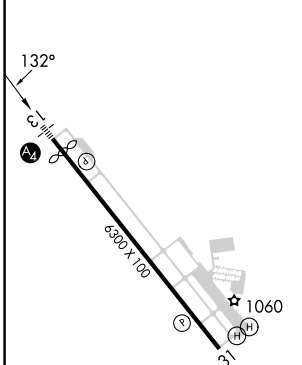
**NA** Circling NA for Cat D SW of Rwy 13-31. When local altimeter setting not received, use Laughlin AFB altimeter setting and increase all DAs 30 feet, all MDAs 40 feet, increase S-LOC 13 Cat D and Circling Cats C and D visibility ¼ SM. VDP NA when using Laughlin AFB altimeter setting.

**MALS**  
MISSED APPROACH: Climb to 2000 via heading 122° then climbing left turn to 4000 direct DLF VORTAC and hold. Continue climb-in-hold to 4000.

ASOS <b>118.525</b>	DEL RIO APP CON ★ <b>119.6 259.1</b>	CLNC DEL <b>120.5</b>	UNICOM <b>122.8 (CTAF)</b>
------------------------	-----------------------------------------	--------------------------	-------------------------------



ELEV 1002	<b>D</b>	TDZE 1002
-----------	----------	-----------



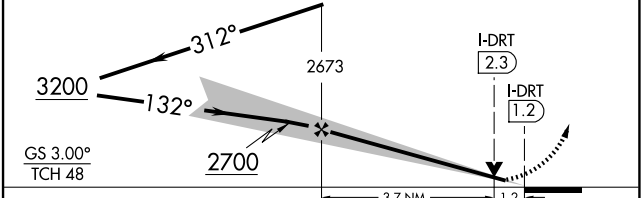
Remain within 10 NM

DR KOTTI LOM I-DRT 6

2000 hdg 122°

4000

DLF



REIL Rwy 31  
MIRL Rwy 13-31

FAF to MAP 4.9 NM

Knots	60	90	120	150	180
Min:Sec	4:54	3:16	2:27	1:58	1:38

CATEGORY	A	B	C	D
S-ILS 13	1202-¾ 200 (200-¾)			
S-LOC 13	1420-½	418 (500-½)	1420-¾	418 (500-¾)
CIRCLING	1440-1 438 (500-1)	1560-1 558 (600-1)	1740-2 738 (800-2)	1740-2¼ 738 (800-2¼)

SC-3, 20 FEB 2025 to 20 MAR 2025

SC-3, 20 FEB 2025 to 20 MAR 2025