

WAAS CH 98652 W08B	APP CRS 084°	Rwy Idg 4054 TDZE 457 Apt Elev 457
--	------------------------	---

RNAV (GPS) Z RWY 8

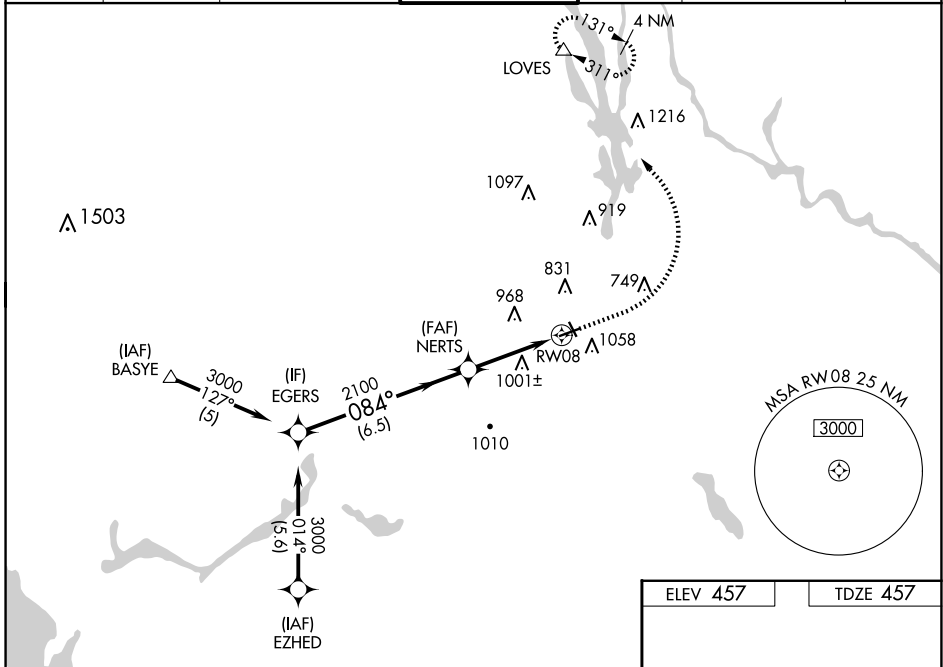
DANBURY MUNI (D.X.R)

RNP APCH - GPS.

- When local altimeter setting not received, use White Plains altimeter setting and increase LPV DA to 1090 feet and all visibilities $\frac{1}{8}$ SM. Increase LNAV/VNAV DA to 1412 feet and all visibilities $\frac{1}{2}$ SM.
- Increase all MDAs 60 feet; and Circling visibility Cat A $\frac{1}{4}$ SM. For uncompensated Baro-VNAV systems, LNAV/VNAV NA below -15°C or above 46°C. Baro-VNAV NA when using White Plains altimeter setting. Helicopter visibility reduction below 1 SM NA. Circling NA south of Rwy 8-26. Circling Rwy 26, 17 NA at night.

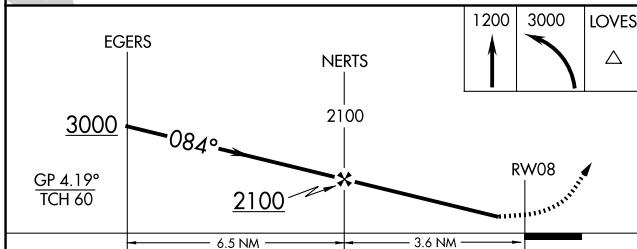
MISSED APPROACH:
Climb to 1200 then climbing left turn to 3000 direct LOVES and hold.

ATIS 127.75	HPN ASOS 133.8	NEW YORK APP CON 126.4 257.65	DANBURY TOWER* 119.4 (CTAF)	GND CON 121.6	CLNC DEL 128.6 (When twr closed)	UNICOM 122.95
-----------------------	--------------------------	---	---------------------------------------	-------------------------	---	-------------------------

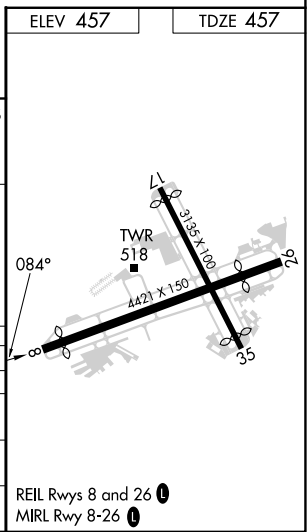


NE-1, 20 FEB 2025 to 20 MAR 2025

NE-1, 20 FEB 2025 to 20 MAR 2025



CATEGORY	A	B	C	D
LPV DA	1030-1 $\frac{5}{8}$	573 (600-1 $\frac{5}{8}$)		NA
LNAV/VNAV DA	1352-2 $\frac{1}{2}$	895 (900-2 $\frac{1}{2}$)		NA
LNAV MDA	1240-1 783 (800-1)	1280-1 $\frac{1}{4}$ 823 (900-1 $\frac{1}{4}$)		NA
CIRCLING	1240-1 783 (800-1)	1280-1 $\frac{1}{4}$ 823 (900-1 $\frac{1}{4}$)		NA



REIL Rwy 8 and 26
MIRL Rwy 8-26