

SINTON, TEXAS

AL-5274 (FAA)

24137

APP CRS	Rwy Idg	4073
140°	TDZE	48
	Apt Elev	48

RNAV (GPS) RWY 14

SINTON (T69)

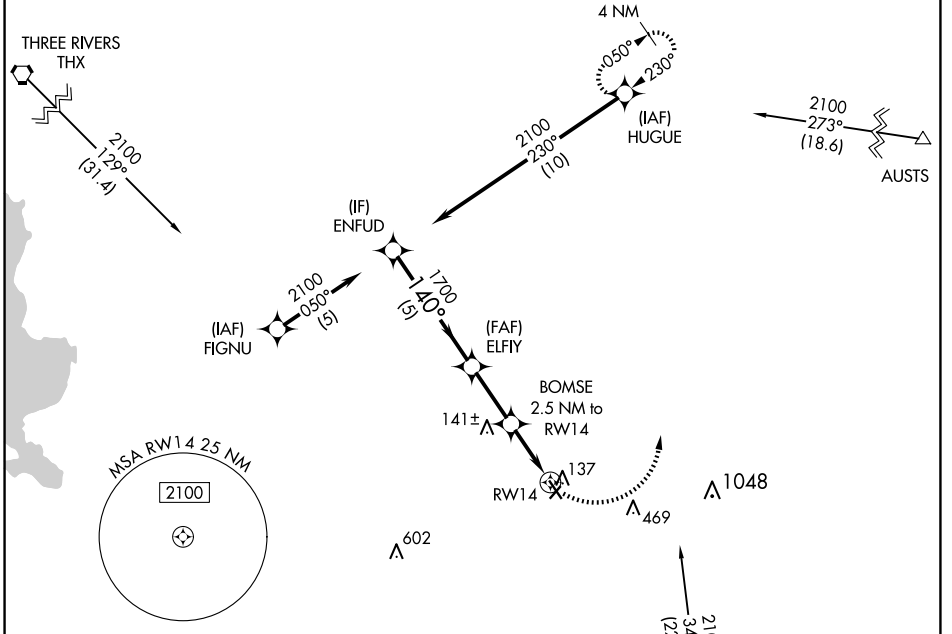
RNP APCH.

Procedure NA at night.

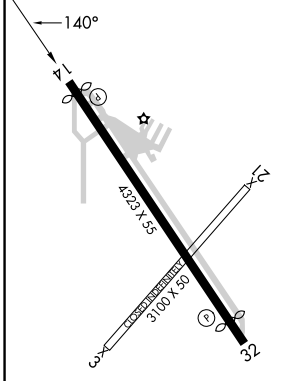
Rwy 14 helicopter visibility reduction below 1 SM NA.

MISSED APPROACH: Climbing left turn to 2100 direct HUGUE and hold.

AWOS-3 118.25	CORPUS APP CON 120.9 348.725	UNICOM 122.8 (CTAF)
-------------------------	--	-------------------------------



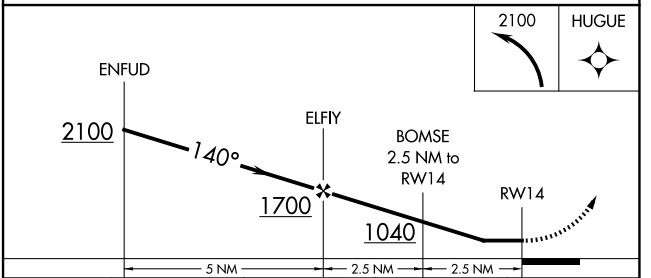
ELEV 48	TDZE 48
---------	---------



MIRL Rwy 14-32

REL Rwy 14 and 32

Procedure NA for arrivals at CRP VORTAC on V20-70 southwest bound.



CATEGORY	A	B	C	D
LNAV MDA	480-1	432 (500-1)		NA
CIRCLING	620-1 572 (600-1)	720-1 672 (700-1)		NA

SINTON, TEXAS
Orig-B 31DEC20

28°02'N-97°33'W

RNAV (GPS) RWY 14

SC-3, 20 FEB 2025 to 20 MAR 2025

SC-3, 20 FEB 2025 to 20 MAR 2025