

SINTON, TEXAS

AL-5274 (FAA)

24137

VORTAC CRP <b>115.5</b>	APP CRS <b>138°</b>	Rwy ldg TDZE Apt Elev	<b>4073</b> <b>48</b> <b>48</b>
Chan <b>102</b>			

# VOR RWY 14

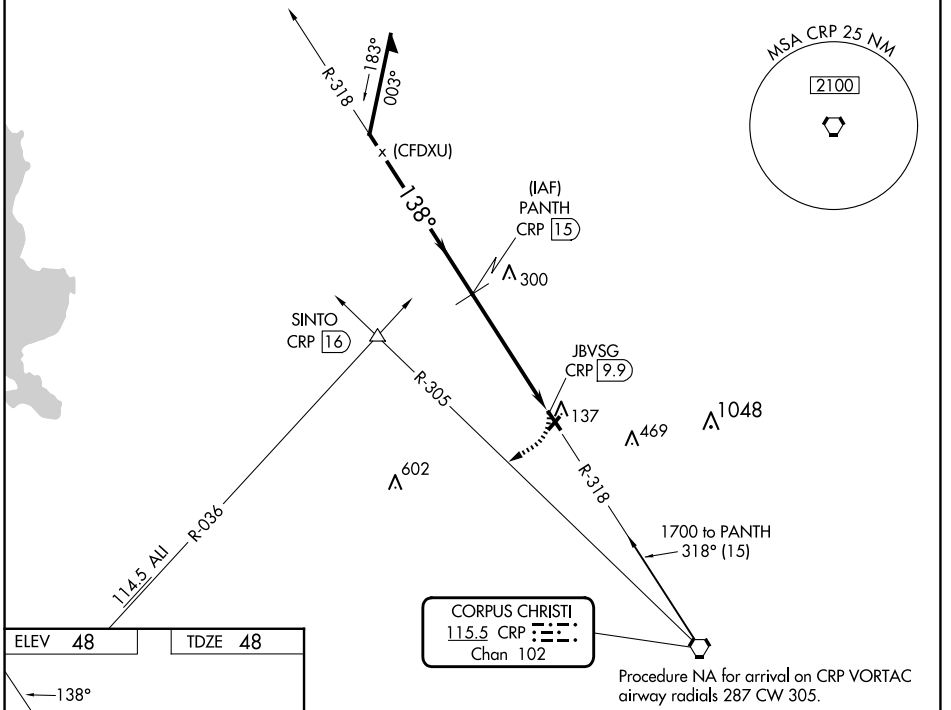
SINTON (T69)

DME required.

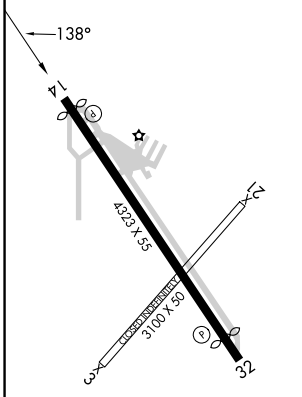
Procedure NA at night.  
Rwy 14 helicopter visibility reduction below 1 SM NA.

MISSED APPROACH: Climbing right turn to 1800 on heading 230° and CRP VORTAC R-305 to SINTO INT/CRP 16 DME.

AWOS-3 <b>118.25</b>	CORPUS APP CON <b>120.9 348.725</b>	UNICOM <b>122.8</b> (CTAF) <b>0</b>
-------------------------	--	--



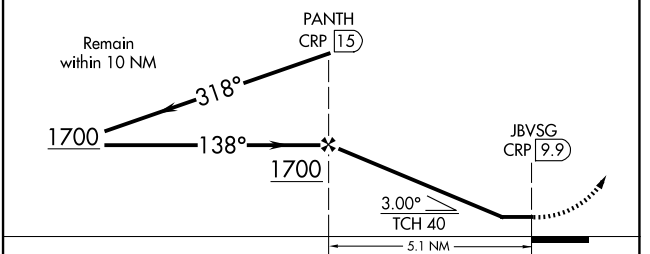
ELEV <b>48</b>	TDZE <b>48</b>
----------------	----------------



MIRL Rwy 14-32 **0**  
REIL Rwy 14 and 32 **0**

VGSI and descent angles not coincident (VGSI Angle 3.00°/TCH 19).

1800 hdg 230°	CRP R-305	SINTO △
---------------------	--------------	------------



CATEGORY	A	B	C	D
S-14	640-1	592 (600-1)		NA
CIRCLING	640-1 592 (600-1)	720-1 672 (700-1)		NA

SINTON, TEXAS  
Amdt 1C 31DEC20

28°02' N-97°33' W

# SINTON (T69) VOR RWY 14

SC-3, 20 FEB 2025 to 20 MAR 2025

SC-3, 20 FEB 2025 to 20 MAR 2025