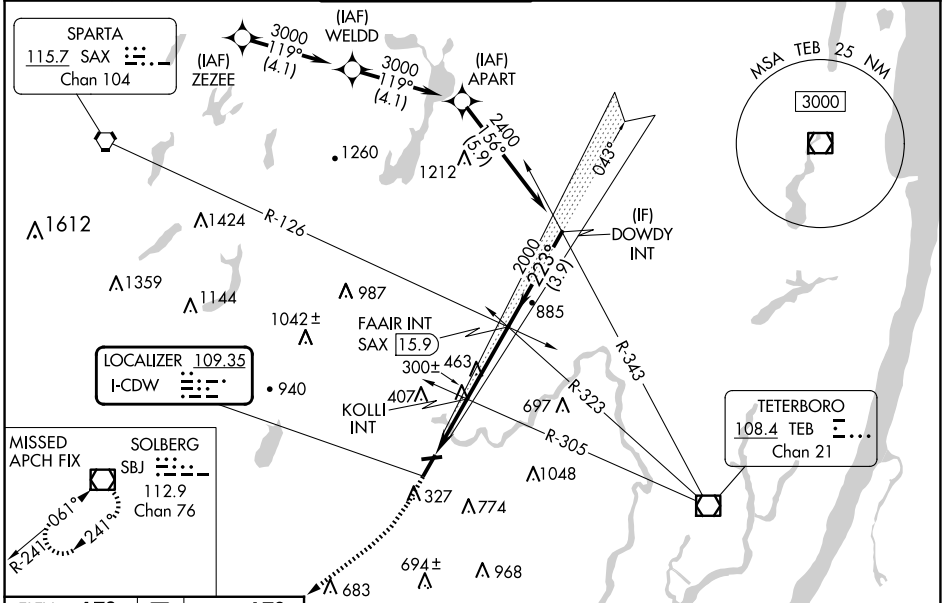


LOC I-CDW	APP CRS	Rwy Idg	4042
109.35	223°	TDZE	172
		Apt Elev	172

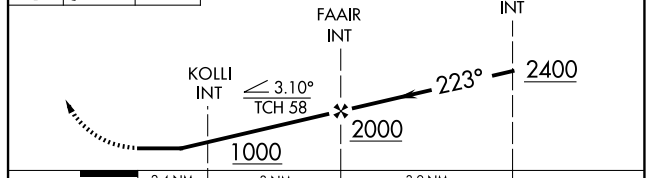
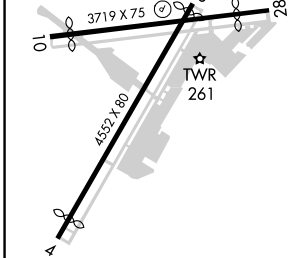
LOC RWY 22

ESSEX COUNTY (CDW)

Aircraft not GPS equipped - RADAR required for procedure entry.				MISSED APPROACH: Climb to 600 then climbing right turn to 2200 direct SBJ VOR/DME and hold.	
⚠ NA Rwy 22 helicopter visibility required below 1 SM NA. When local altimeter setting not received, use Newark altimeter setting and increase all MDA 60 feet and S-22 Cat A and Circling Cat C visibility ¼ SM. KOLLI INT minimums: increase all MDA 60 feet and increase S-22 Cats C/D and Circling Cats A and C visibility ¼ SM. Circling Rwy 10, 28 NA at night.					
ATIS	NEWARK APP CON	CALDWELL TOWER ★	GND CON	CLNC DEL	UNICOM
135.5	127.6 379.9	119.8 (CTAF) 0	121.9	121.1	122.95



ELEV 172	D	TDZE 172	600	2200	SBJ	VGSI and descent angles not coincident (VGSI Angle 3.00/TCH 42).
----------	---	----------	-----	------	-----	--



CATEGORY	A	B	C	D
S-LOC 22	1000-1 828 (900-1)	1000-1¼ 828 (900-1¼)	1000-2½ 828 (900-2½)	828 (900-2½)
CIRCLING	1000-1¼ 828 (900-1¼)	1040-1¼ 868 (900-1¼)	1100-2¾ 928 (1000-2¾)	1400-3 1228 (1300-3)
KOLLI INT MINIMUMS				
S-LOC 22	560-1	388 (400-1)	560-1½	388 (400-1½)
CIRCLING	960-1 788 (800-1)	1040-1¼ 868 (900-1¼)	1100-2¾ 928 (1000-2¾)	1400-3 1228 (1300-3)

REIL Rwy 22 1
MIRL Rwy 10-28 1
HIRL Rwy 4-22 1

FAF to MAP 5.4 NM

Knots	60	90	120	150	180
Min:Sec	5:24	3:36	2:42	2:10	1:48

NE-2, 20 FEB 2025 to 20 MAR 2025

NE-2, 20 FEB 2025 to 20 MAR 2025