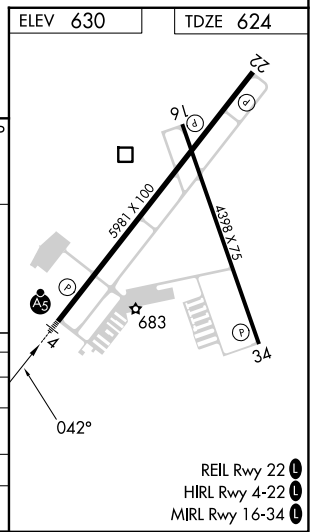
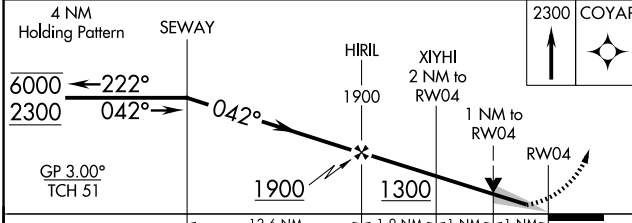
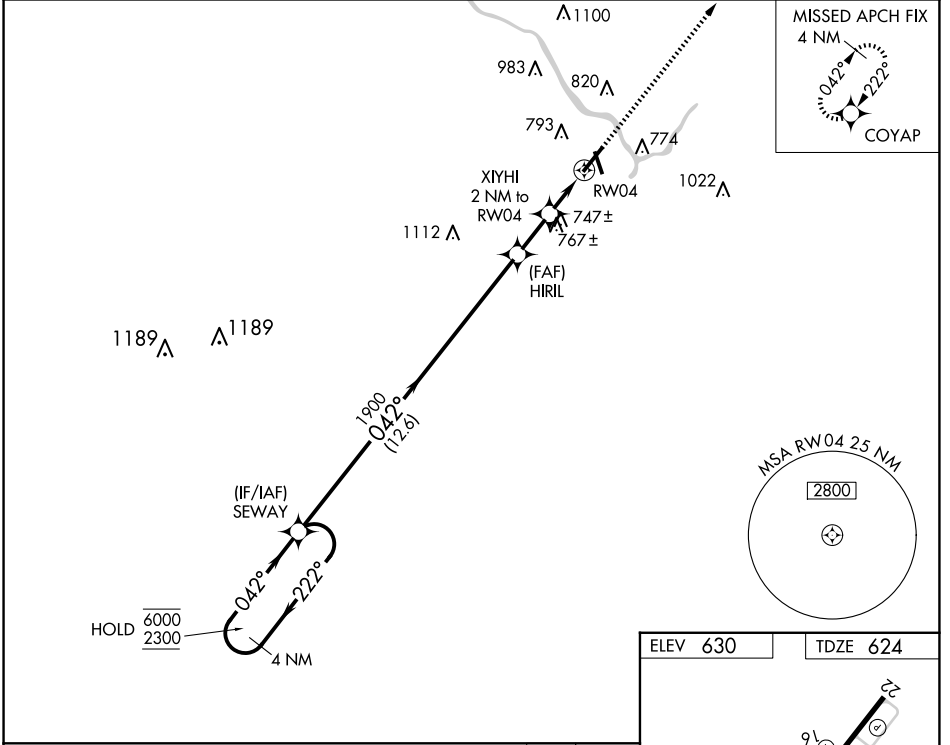


WAAS CH 42799 W04A	APP CRS 042°	Rwy Idg TDZE Apt Elev	5981 624 630
--	------------------------	-----------------------------	---

RNAV (GPS) RWY 4

GREATER KANKAKEE (IKK)

RNP APCH - GPS.		MALSR	MISSED APPROACH: Climb to 2300 direct COYAP and hold.
<p>▽ Circling Rwy 16, 34 NA at night. For uncompensated Baro-VNAV systems, LNAV/VNAV NA below -16°C or above 54°C. For inop ALS, increase LNAV Cats C/D to 1 SM.</p> <p>▲</p>			
AWOS-3 128.475	CHICAGO CENTER 132.5 284.7	UNICOM 123.0 (CTAF) 0	



CATEGORY	A	B	C	D
LPV DA		824-1/2	200 (200-1/2)	
LNAV/VNAV DA		1010-5/8	386 (400-5/8)	
LNAV MDA	1000-1/2	376 (400-1/2)	1000-5/8	376 (400-5/8)
C CIRCLING	1080-1 450 (500-1)	1100-1 470 (500-1)	1140-1 1/2 510 (600-1 1/2)	1340-2 1/4 710 (800-2 1/4)

EC-3, 20 FEB 2025 to 20 MAR 2025

EC-3, 20 FEB 2025 to 20 MAR 2025