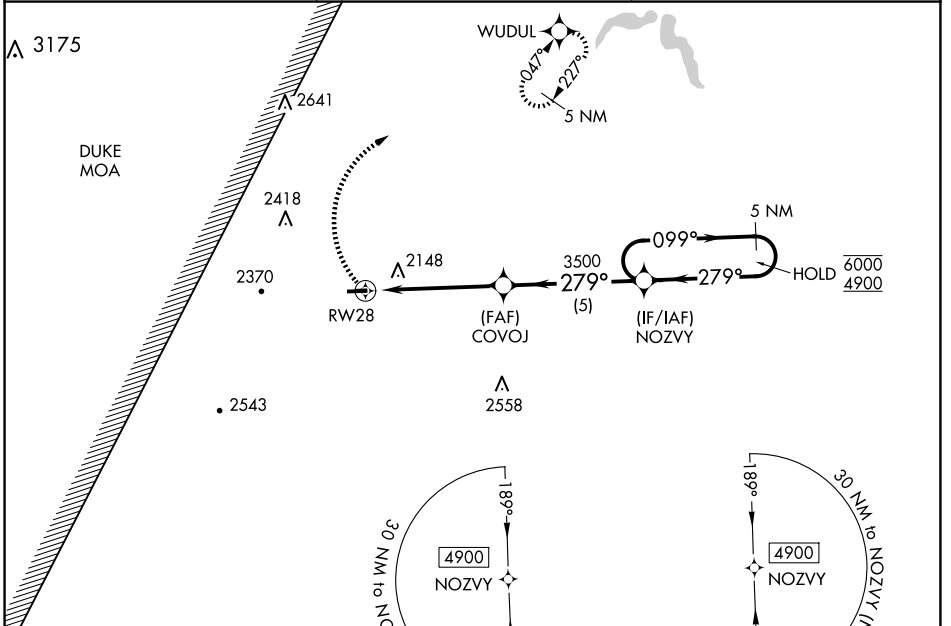


WAAS CH 99530 W28A	APP CRS 279°	Rwy Idg TDZE Apt Elev	3597 1892 1892
--	------------------------	-----------------------------	---

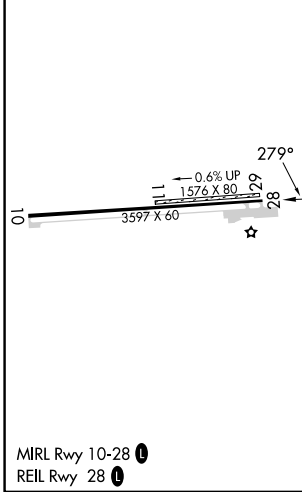
RNAV (GPS) RWY 28

GRAND CANYON RGNL (N38)

RNP APCH.		MISSED APPROACH: Climbing right turn to 4500 direct WUDUL and hold.
<p>▼ ▲</p> <p>Circling NA to Rwy 11 and 29. Procedure NA at night. Rwy 28 helicopter visibility reduction below 1 SM NA.</p>		
AWOS-3PT 120.925	ELMIRA APP CON ★ 128.425 257.8	UNICOM 122.8 (CTAF) 0



ELEV 1892	TDZE 1892
-----------	-----------



4500 WUDUL Visual Segment - Obstacles.		NOZZY 5 NM Holding Pattern		
CATEGORY	A	B	C	D
LP MDA	2300-1	408 (500-1)	2300-1 1/8 408 (500-1 1/8)	NA
LNAV MDA	2420-1	528 (600-1)	2420-1 1/2 528 (600-1 1/2)	NA
C CIRCLING	2680-1	788 (800-1)	2740-2 1/2 848 (900-2 1/2)	NA

NE-4, 20 FEB 2025 to 20 MAR 2025

NE-4, 20 FEB 2025 to 20 MAR 2025