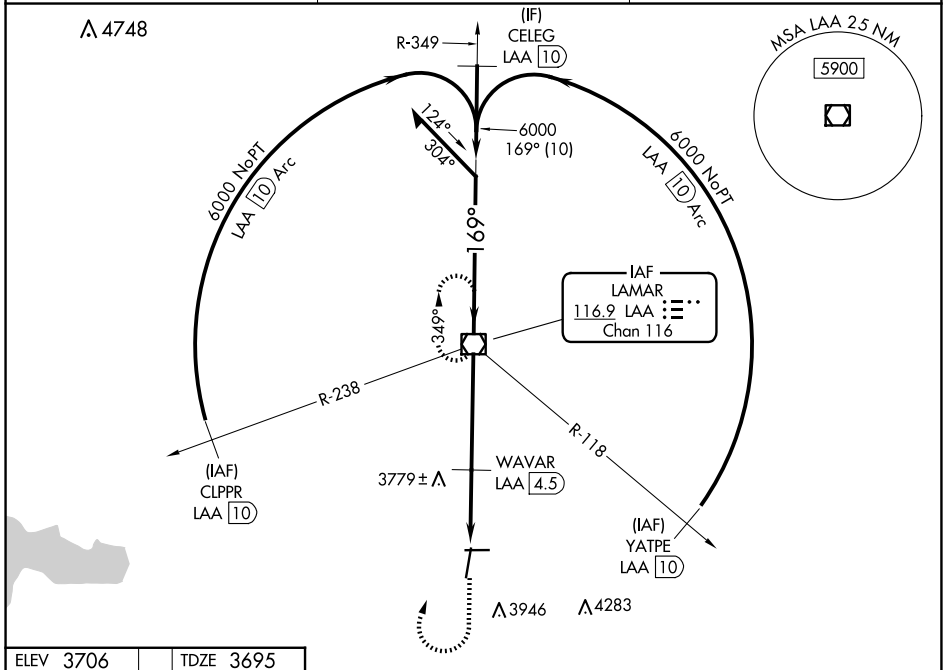


VOR/DME LAA <b>116.9</b> Chan <b>116</b>	APP CRS <b>169°</b>	Rwy Idg TDZE Apt Elev	<b>6304</b> <b>3695</b> <b>3706</b>
--	------------------------	-----------------------------	---

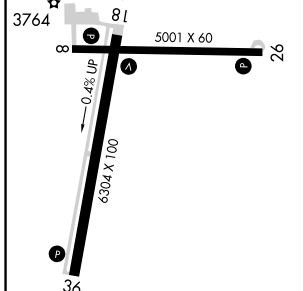
**VOR RWY 18**  
SOUTHEAST COLORADO RGNL (LAA)

**MISSED APPROACH:** Climb to 4600 then climbing right turn to 6000 direct LAA VOR/DME and hold.

ASOS <b>135.625</b>	DENVER CENTER <b>133.4 377.175</b>	UNICOM <b>122.8 (CTAF)</b>
------------------------	---------------------------------------	-------------------------------

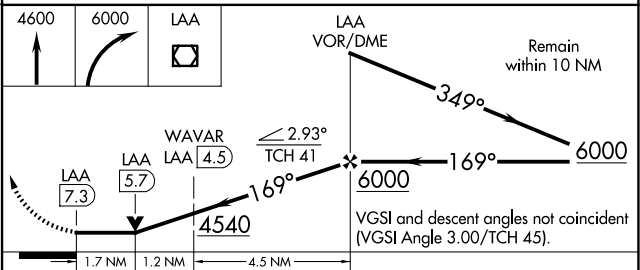


ELEV 3706	TDZE 3695
-----------	-----------



REIL Rws 8, 26, 18, and 36  
MIRL Rws 8-26 and 18-36

FAF to MAP 7.3 NM					
Knots	60	90	120	150	180
Min:Sec	7:18	4:52	3:39	2:55	2:26



CATEGORY	A	B	C	D
S-18	4540-1 845 (900-1)	4540-1¼ 845 (900-1¼)	4540-2½ 845 (900-2½)	4540-2¾ 845 (900-2¾)
<b>CIRCLING</b>	4540-1¼	834 (900-1¼)	4540-2½ 834 (900-2½)	4540-2¾ 834 (900-2¾)
<b>DME MINIMUMS</b>				
S-18	4260-1	565 (600-1)	4260-1½ 565 (600-1½)	4260-1¾ 565 (600-1¾)
<b>CIRCLING</b>	4420-1	714 (800-1)	4420-2 714 (800-2)	4420-2¼ 714 (800-2¼)

SW-1, 20 FEB 2025 to 20 MAR 2025

SW-1, 20 FEB 2025 to 20 MAR 2025