

(KAYLN3.KAYLN) 24137

# KAYLN THREE DEPARTURE (RNAV) AL-5293 (FAA)

OAKLAND/TROY (VLL)

TROY, MICHIGAN

EC-1, 20 FEB 2025 to 20 MAR 2025

DETROIT DEP CON  
132.35 284.0  
AWOS-3  
119.475  
CTAF  
123.05

### TAKEOFF MINIMUMS:

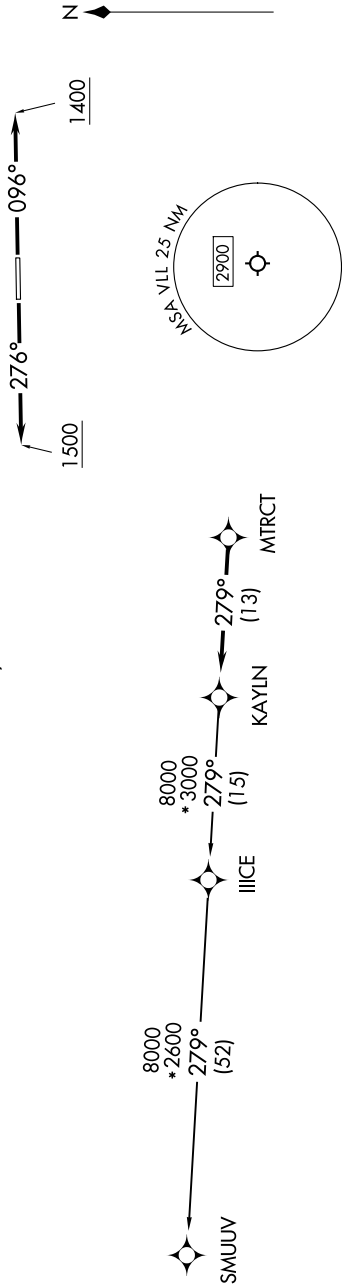
Rwy 10: Standard.

Rwy 28: Standard with minimum climb of 476' per NM to 1500.

RNAV-1 DME/IRU or GPS.  
RADAR required.

### TOP ALTITUDE: ASSIGNED AT ATC

NOTE: Turbojet departures at/above 10000, maintain 280K until advised by ATC.



NOTE: Chart not to scale.

### DEPARTURE ROUTE DESCRIPTION

TAKEOFF RUNWAY 10: Climb on heading 096° to 1400 then as assigned by ATC, thence....

TAKEOFF RUNWAY 28: Climb on heading 276° to 1500 then as assigned by ATC, thence....

....for RADAR vectors to MTRCT, then on track 279° to KAYLN, then on (transition). Maintain ATC assigned altitude, expect filed altitude 10 minutes after departure.

SMUUV TRANSITION (KAYLN3.SMUUV):

KAYLN THREE DEPARTURE (RNAV)

(KAYLN3.KAYLN) 16MAY24

TROY, MICHIGAN

OAKLAND/TROY (VLL)

EC-1, 20 FEB 2025 to 20 MAR 2025