

(ZETTR4.ZETTR) 24137

# ZETTR FOUR DEPARTURE (RNAV)

AL-5293 (FAA)

OAKLAND/TROY (VLL)

TROY, MICHIGAN

DETROIT DEP CON  
132.35 284.0  
AWOS-3  
119.475  
CTAF  
123.05

RNAV 1 - DME/DME/IRU or GPS.

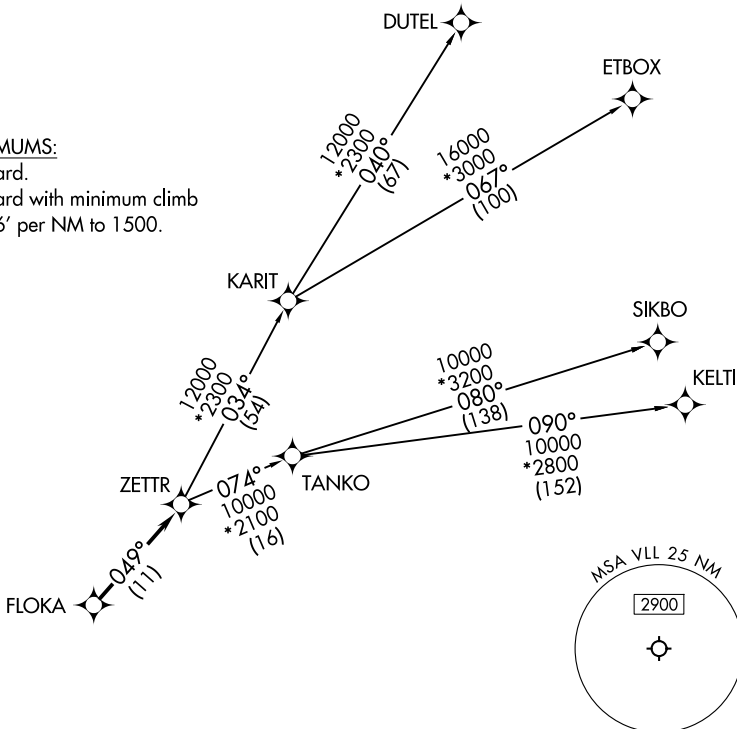
RADAR required.

**TOP ALTITUDE:  
ASSIGNED BY ATC**

### TAKEOFF MINIMUMS:

Rwy 10: Standard.

Rwy 28: Standard with minimum climb  
of 476' per NM to 1500.



EC-1, 20 FEB 2025 to 20 MAR 2025

EC-1, 20 FEB 2025 to 20 MAR 2025



NOTE: Turbojet departures at/above 10000, maintain 280K until advised by ATC.

NOTE: TANKO Transition: For use by CYYZ area arrivals only, or as assigned by ATC.

NOTE: Chart not to scale.

### DEPARTURE ROUTE DESCRIPTION

TAKEOFF RUNWAY 10: Climb on heading 096° to 1400 then as assigned by ATC, thence....

TAKEOFF RUNWAY 28: Climb on heading 276° to 1500 then as assigned by ATC, thence....

...for RADAR vectors to FLOKA, then on track 049° to ZETTR, then on (transition). Maintain ATC assigned altitude, expect filed altitude 10 minutes after departure.

DUTEL TRANSITION (ZETTR4.DUTEL):

ETBOX TRANSITION (ZETTR4.ETBOX):

KELTI TRANSITION (ZETTR4.KELTI):

SIKBO TRANSITION (ZETTR4.SIKBO):

TANKO TRANSITION (ZETTR4.TANKO):

# ZETTR FOUR DEPARTURE (RNAV)

(ZETTR4.ZETTR) 16MAY24

TROY, MICHIGAN

OAKLAND/TROY (VLL)