

WAAS CH <b>63241</b> <b>W33A</b>	APP CRS <b>326°</b>	Rwy Idg <b>4350</b> TDZE <b>142</b> Apt Elev <b>148</b>
----------------------------------------	------------------------	---------------------------------------------------------------

# RNAV (GPS) RWY 33

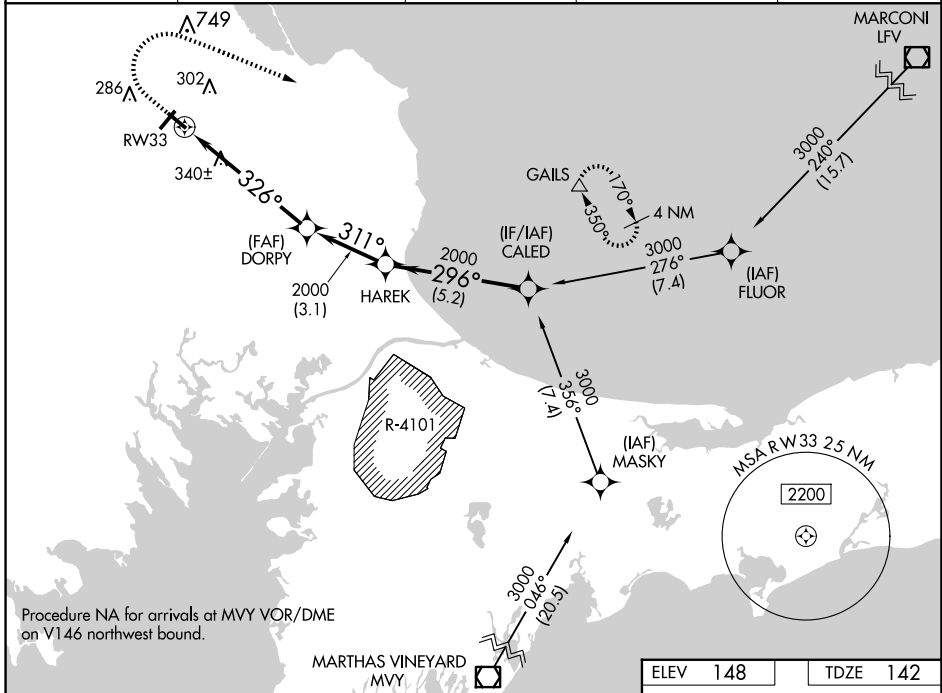
PLYMOUTH MUNI (PYM)

RNP APCH - GPS.

**⚠** Circling Rwy 15 NA at night. Rwy 33 helicopter visibility reduction below 3/4 SM NA.  
**⚠** For uncompensated Baro-VNAV systems, LNAV/VNAV NA below -18°C or above 54°C.

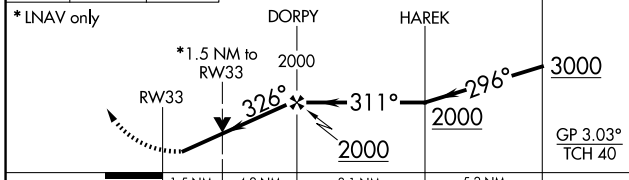
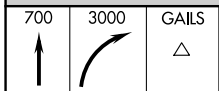
MISSED APPROACH: Climb to 700 then climbing right turn to 3000 direct GAILS and hold.

ASOS <b>135.625</b>	BOSTON APP CON <b>118.2 284.6</b>	CLINC DEL <b>127.75</b>	UNICOM <b>122.725 (CTAF)</b>	<b>122.9 0</b>
------------------------	--------------------------------------	----------------------------	---------------------------------	----------------

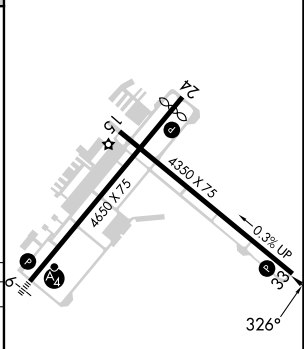


NE-1, 20 FEB 2025 to 20 MAR 2025

NE-1, 20 FEB 2025 to 20 MAR 2025



ELEV 148	TDZE 142
----------	----------



CATEGORY	A	B	C	D
LPV DA	393-3/4	251 (300-3/4)		NA
LNAV/VNAV DA	486-1	344 (400-1)		NA
LNAV MDA	660-1	518 (600-1)	660-1 3/8 518 (600-1 3/8)	NA
<b>C</b> CIRCLING	660-1	512 (600-1)	760-1 3/4 612 (700-1 3/4)	NA

REIL Rwy 24 **0**  
 MIRL Rwy 6-24 and 15-33 **0**