

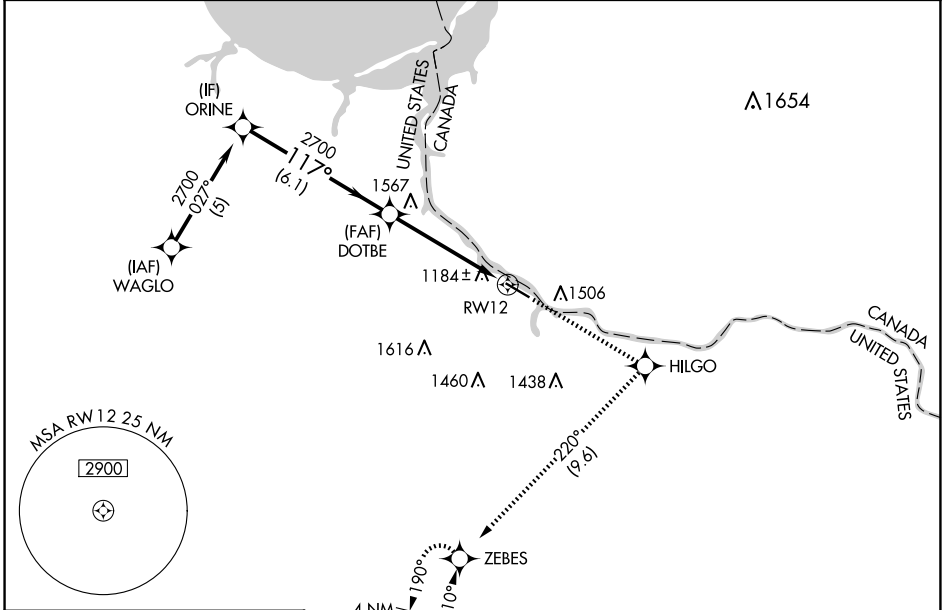
APP CRS 117°	Rwy Idg TDZE Apt Elev	5498 1085 1085
------------------------	-----------------------------	-------------------------------------------

RNAV (GPS) RWY 12

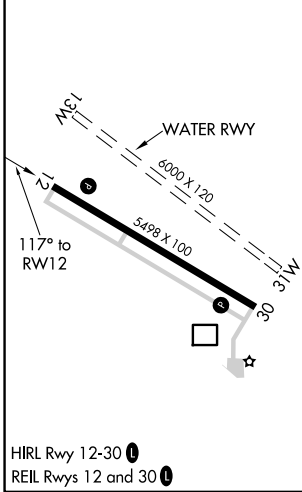
BAUDETTE INTL (BDE)

RNP APCH.	MISSED APPROACH: Climb to 3000 direct HILGO and right turn on track 220° to ZEBES and hold.
<p>▽ Rwy 12 helicopter visibility reduction below 3/4 SM NA.</p> <p>▲ For uncompensated Baro-VNAV systems, LNAV/VNAV NA below -17°C or above 54°C.</p>	

ASOS 126.775	MINNEAPOLIS CENTER 134.75 251.1	UNICOM 122.8 (CTAF)
------------------------	-------------------------------------------	-------------------------------



ELEV 1085	TDZE 1085
-----------	-----------



	ORINE	DOTBE		3000	HILGO	ZEBES
		2700	2700	↑	✧	↻ tr 220°
	2700	117°	2700			
					*1.3 NM to RWY12	*LNAV only
GP 3.00°						
TCH 47						
		6.1 NM	3.6 NM	1.3 NM		
CATEGORY	A	B	C	D		
LNAV/VNAV DA	1481-1½		396 (400-1½)			
LNAV MDA	1560-1	475 (500-1)	1560-1¾	1560-1½	475 (500-1¾)	475 (500-1½)

NC-1, 20 FEB 2025 to 20 MAR 2025

NC-1, 20 FEB 2025 to 20 MAR 2025