

WAAS CH 50407 W18A	APP CRS 180°	Rwy Idg TDZE Apt Elev	5504 800 801
--	------------------------	-----------------------------	---

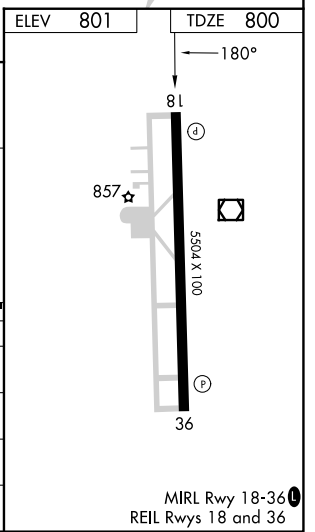
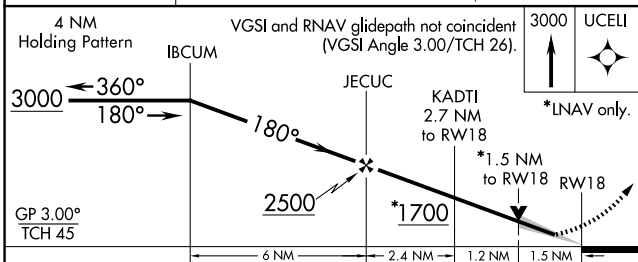
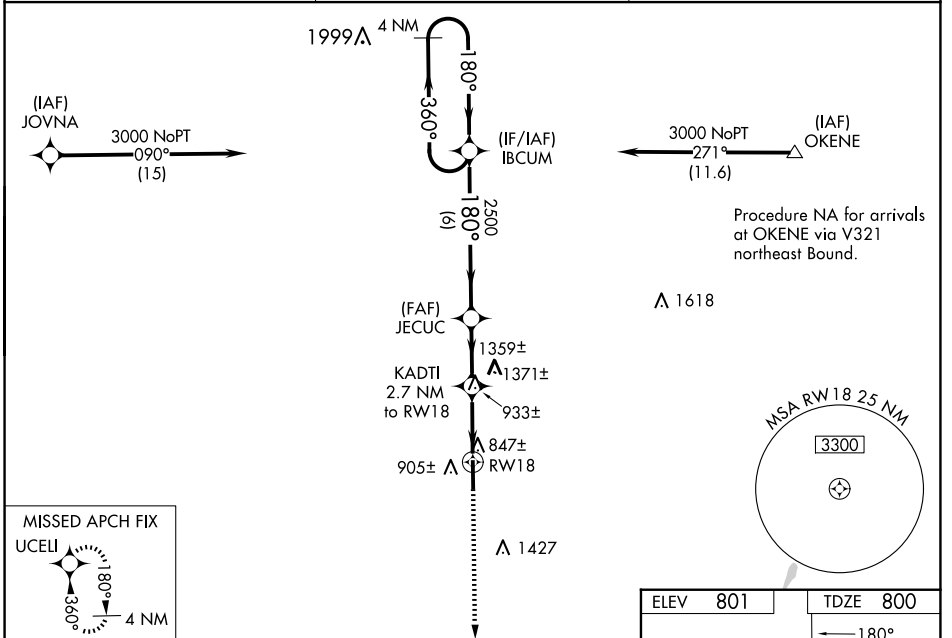
RNAV (GPS) RWY 18

BOMAR FLD/SHELBYVILLE MUNI (SYI)

⚠ When local altimeter setting not received, use Tullahoma altimeter setting and increase LPV DA to 1123, LNAV/VNAV DA to 1389, all MDA 80 feet, increase LPV all Cats visibility 1/2 SM, LNAV/VNAV all Cats visibility 1/4 SM and LNAV Cat C and D visibility 1/4 SM. Baro-VNAV NA when using Tullahoma altimeter setting. For uncompensated Baro-VNAV systems, LNAV/VNAV NA below -1.6°C (4°F) or above 47°C (116°F). DME/DME RNP-0.3 NA. VDP NA when using Tullahoma altimeter setting.

MISSED APPROACH:
Climb to 3000 direct UCELL and hold.

AWOS-3 119.275	MEMPHIS CENTER 128.15 323.125	UNICOM 122.8 (CTAF) 0
--------------------------	---	---------------------------------



CATEGORY	A	B	C	D
LPV DA	1050-3/4		250 (300-3/4)	
LNAV/VNAV DA	1316-13/4		516 (600-13/4)	
LNAV MDA	1280-1	480 (500-1)	1280-1 1/4	1280-1 1/2
	479 (500-1)	619 (700-1)	480 (500-1 1/4)	480 (500-1 1/2)
C CIRCLING	1280-1	1420-1	1780-3 979 (1000-3)	
	479 (500-1)	619 (700-1)		

SE-1, 20 FEB 2025 to 20 MAR 2025

SE-1, 20 FEB 2025 to 20 MAR 2025