

VOR/DME MUE <b>113.3</b> Chan <b>80</b>	APP CRS <b>237°</b>	Rwy Idg TDZE Apt Elev	<b>N/A</b> <b>N/A</b> <b>2671</b>
---	------------------------	-----------------------------	---

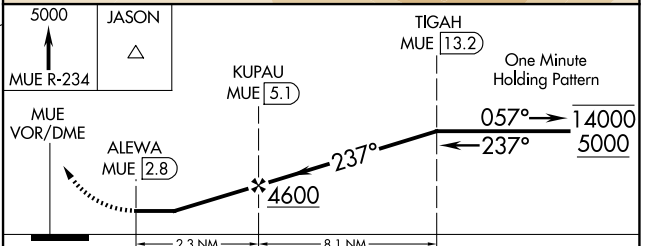
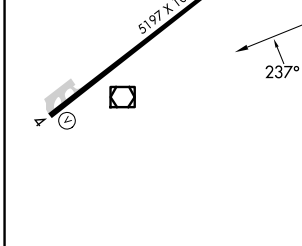
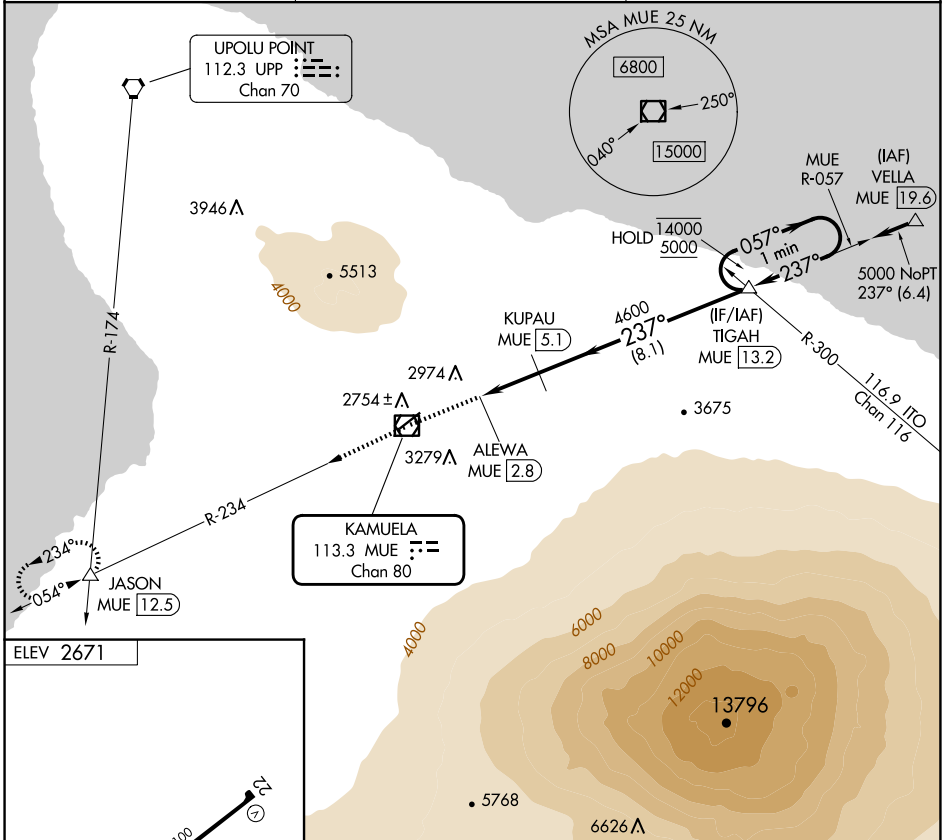
**VOR-A**  
WAIMEA-KOHALA (MUE)(PHMU)

DME required.

When local altimeter setting not received, procedure NA.  
Circling NA northwest of Rwy 4-22.

MISSED APPROACH: Climb to 5000 on MUE VOR/DME R-234 to JASON INT/12.5 DME and hold.

AWOS-3PT <b>120.0</b>	HCF CENTER <b>118.45 278.3</b>	CTAF <b>122.90</b>
--------------------------	-----------------------------------	-----------------------



MIRL Rwy 4-22 REIL Rws 4 and 22	<table border="1"> <tr> <td>CATEGORY</td> <td>A</td> <td>B</td> <td>C</td> <td>D</td> </tr> <tr> <td>CIRCLING</td> <td>3680-2<sup>3</sup>/<sub>4</sub></td> <td>1009 (1100-2<sup>3</sup>/<sub>4</sub>)</td> <td>3680-3 1009 (1100-3)</td> <td>3980-3 1309 (1400-3)</td> </tr> </table>				CATEGORY	A	B	C	D	CIRCLING	3680-2 <sup>3</sup> / <sub>4</sub>	1009 (1100-2 <sup>3</sup> / <sub>4</sub> )	3680-3 1009 (1100-3)	3980-3 1309 (1400-3)
CATEGORY	A	B	C	D										
CIRCLING	3680-2 <sup>3</sup> / <sub>4</sub>	1009 (1100-2 <sup>3</sup> / <sub>4</sub> )	3680-3 1009 (1100-3)	3980-3 1309 (1400-3)										

PAC, 20 FEB 2025 to 17 APR 2025

PAC, 20 FEB 2025 to 17 APR 2025