

WAAS CH 69509 W27A	APP CRS 275°	Rwy Idg 5108 TDZE 455 Apt Elev 461
--	------------------------	---

RNAV (GPS) RWY 27

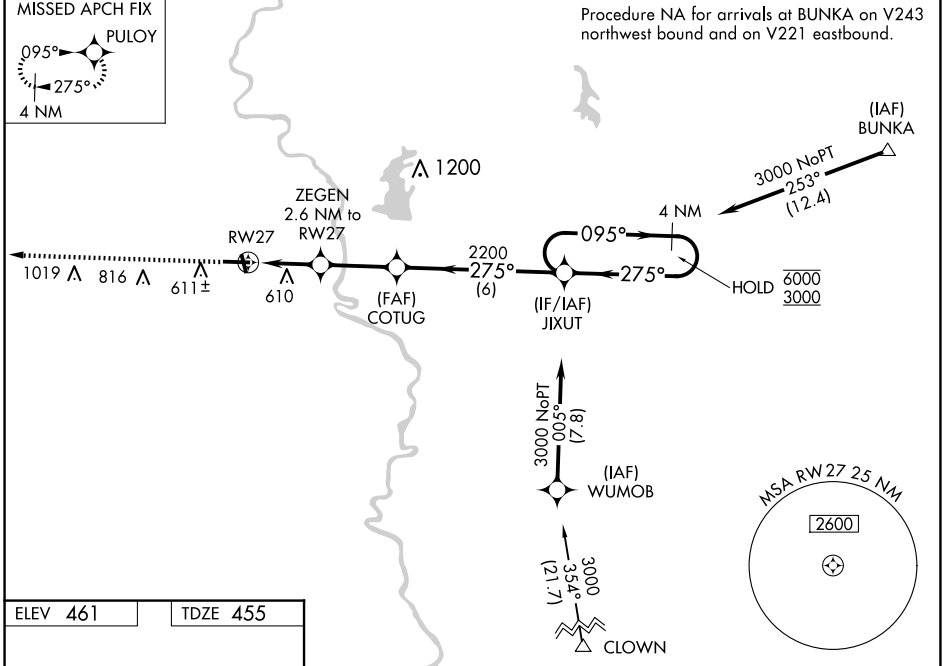
CRAWFORD COUNTY (RSV)

RNP APCH-GPS.

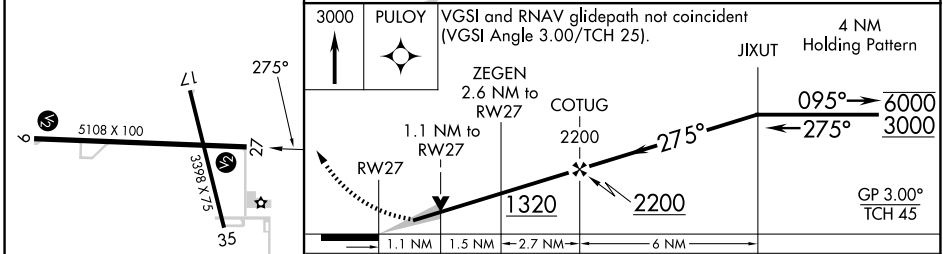
⚠ For uncompensated Baro-VNAV systems, LNAV/VNAV NA below -15°C or above 54°C.

MISSED APPROACH: Climb to 3000 direct PULOY and hold.

AWOS-3 120.50	HULMAN APP CON 135.35 339.8	UNICOM 123.0 (CTAF) 0
-------------------------	---------------------------------------	---------------------------------



ELEV 461	TDZE 455
-----------------	-----------------



CATEGORY	A	B	C	D
LPV DA	705-1		250 (300-1)	
LNAV/VNAV DA	845-1¼		390 (400-1¼)	
LNAV MDA	840-1 385 (400-1)		840-1⅛ 385 (400-1⅛)	
C CIRCLING	940-1 479 (500-1)	1080-1 619 (700-1)	1120-1¾ 659 (700-1¾)	1180-2¼ 719 (800-2¼)

REIL Rwy 17, 9 and 27 **0**
MIRL Rwy 9-27 and 17-35 **0**

ROBINSON, ILLINOIS
Amdt 1B 14JUL22

39°01'N-87°39'W

RNAV (GPS) RWY 27

EC-3, 20 FEB 2025 to 20 MAR 2025

EC-3, 20 FEB 2025 to 20 MAR 2025