

(CWARD2.CWARD) 17341

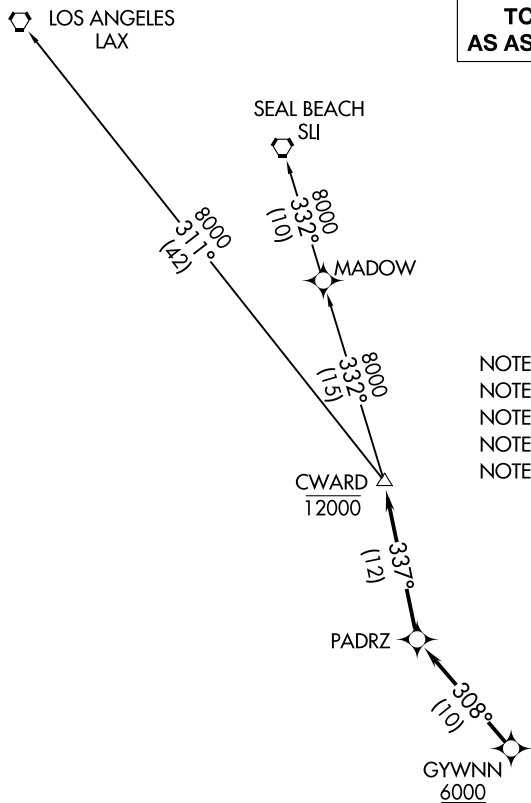
# CWARD TWO DEPARTURE (RNAV)

AL-5310 (FAA)

MC CLELLAN-PALOMAR (CRQ)  
CARLSBAD, CALIFORNIA

**TOP ALTITUDE:  
AS ASSIGNED BY ATC**

ATIS 120.15  
PALOMAR TOWER★ 118.6 276.4  
SOCAL DEP CON 119.6 363.1



- NOTE: RADAR required.
- NOTE: RNAV 1.
- NOTE: GPS or DME/DME/IRU required.
- NOTE: Turbojet and turboprop only.
- NOTE: Tower En Route control only.

SW-3, 20 FEB 2025 to 20 MAR 2025

SW-3, 20 FEB 2025 to 20 MAR 2025

### TAKEOFF MINIMUMS

Rwy 6: Standard with minimum climb of 255' per NM to 1700.

Rwy 24: Standard.

NOTE: Chart not to scale.



### DEPARTURE ROUTE DESCRIPTION

TAKEOFF RUNWAY 6: Climbing left turn heading 245° to 2300, do not exceed 210K until established on heading 245°, expect vectors to cross GYWNN at or above 6000, then on track 308° to PADRZ, then on track 337° to cross CWARD at or below 12000, thence. . .

TAKEOFF RUNWAY 24: Climb heading 245° to 2300, expect vectors to cross GYWNN at or above 6000, then on track 308° to PADRZ, then on track 337° to cross CWARD at or below 12000, thence. . .

. . . on transition. Maintain ATC assigned altitude. Expect filed altitude 10 minutes after departure.

LOS ANGELES TRANSITION (CWARD2.LAX)

SEAL BEACH TRANSITION (CWARD2.SLI)

# CWARD TWO DEPARTURE (RNAV)

(CWARD2.CWARD) 07DEC17

CARLSBAD, CALIFORNIA  
MC CLELLAN-PALOMAR (CRQ)