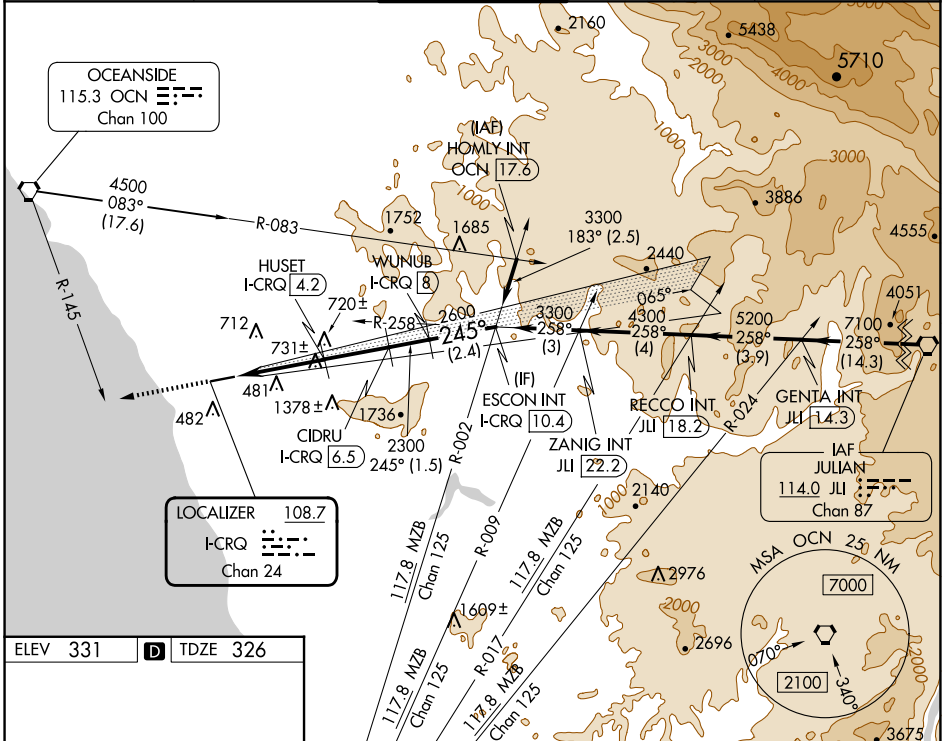


LOC/DME I-CRQ 108.7 Chan 24	APP CRS 245°	Rwy Idg 4897 TDZE 326 Apt Elev 331
---	------------------------	---

ILS or LOC RWY 24

MC CLELLAN-PALOMAR (CRQ)

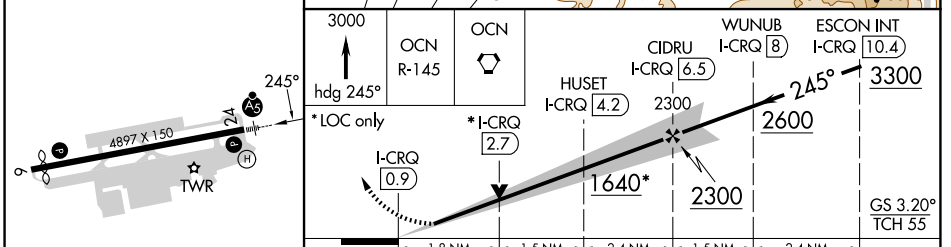
<p>▽ Inop table does not apply to S-ILS Rwy 24. ▲ Autopilot coupled approach NA below 960. DME required. Rwy 24 helicopter visibility reduction below RVR 4000 NA. For inop ALS, increase S-LOC 24 Cat A/B visibility to RVR 5500 and Cat C visibility to 1% SM.</p>	<p>MAISR </p>	<p>MISSED APPROACH: Climb to 3000 on heading 245° and on OCN VORTAC R-145 to OCN VORTAC and hold.</p>		
<p>ATIS 120.15</p>	<p>SOCAL APP CON 127.3 323.0</p>	<p>PALOMAR TOWER * 118.6 (CTAF) 0 276.4</p>	<p>GND CON 121.8</p>	<p>CLNC DEL 134.85</p>



SW-3, 20 FEB 2025 to 20 MAR 2025

SW-3, 20 FEB 2025 to 20 MAR 2025

ELEV 331	D	TDZE 326
----------	----------	----------



CATEGORY	A	B	C	D
S-ILS 24	527/40	201 (200-¾)	576/40 250 (300-¾)	NA
S-LOC 24	1000/40	674 (700-¾)	1000-1½ 674 (700-1½)	NA
C CIRCLING	1000-1 669 (700-1)	1020-1 689 (700-1)	1260-2¾ 929 (1000-2¾)	NA