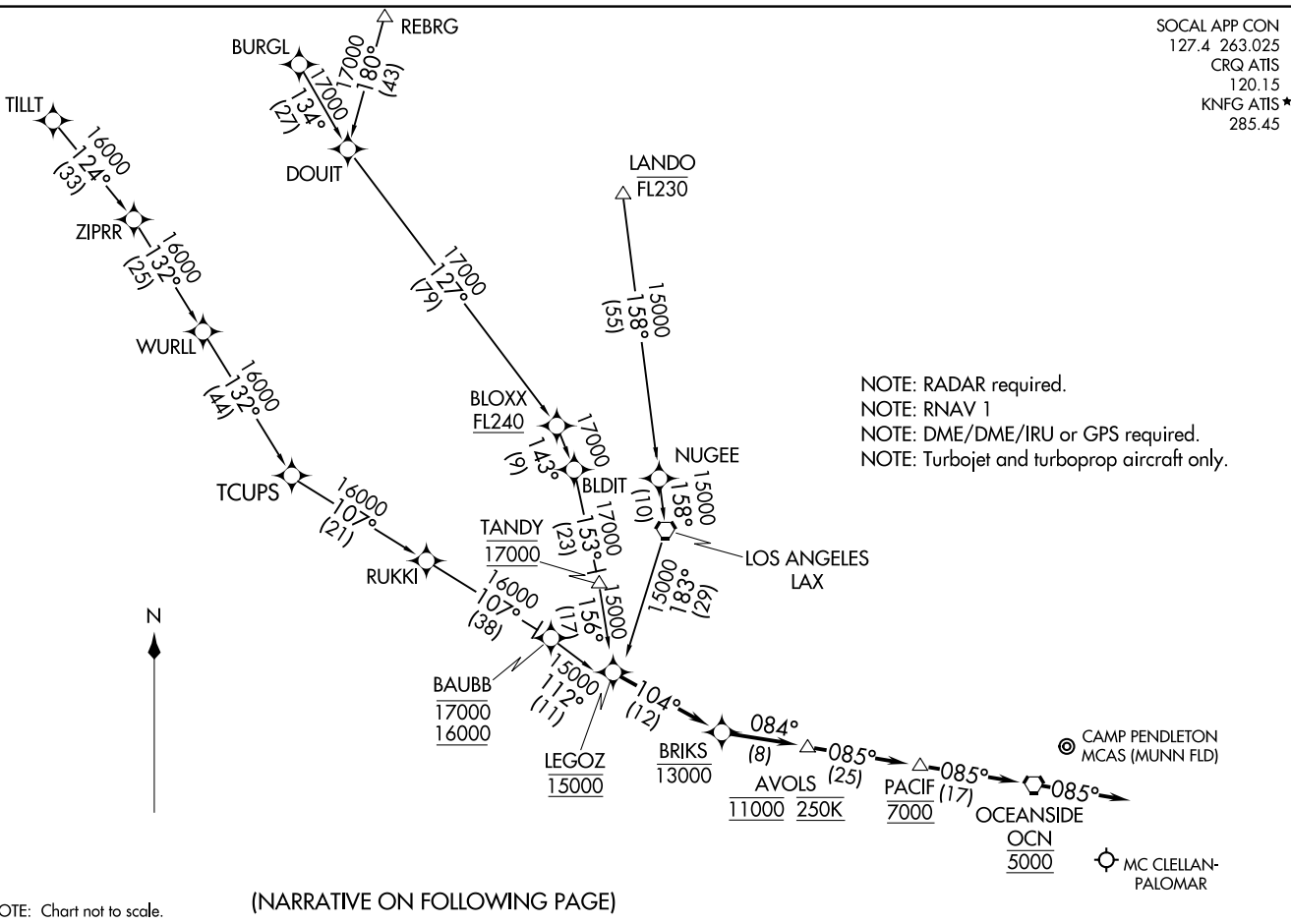


LEGOZ TWO ARRIVAL (RNAV)
(LEGOZ.LEGOZZ) 120CT17

CARLSBAD, CALIFORNIA



(LEGOZ.LEGOZZ) 21168
LEGOZ TWO ARRIVAL (RNAV)

AL-5310 (FAA)

CARLSBAD, CALIFORNIA

ARRIVAL ROUTE DESCRIPTION

BAUBB TRANSITION (BAUBB.LEGOZ2)

BLOXX TRANSITION (BLOXX.LEGOZ2)

BURGL TRANSITION (BURGL.LEGOZ2)

LANDO TRANSITION (LANDO.LEGOZ2)

REBRG TRANSITION (REBRG.LEGOZ2)

TILLT TRANSITION (TILLT.LEGOZ2)

LANDING CRQ RUNWAY 6: From LEGOZ on track 104° to cross BRIKS at or below 13000, then on track 084° to cross AVOLS at 11000 and at 250K, then on track 085° to cross PACIF at 7000. Expect RNAV (RNP) Z RWY 6 approach.

LANDING CRQ RUNWAY 24: From LEGOZ on track 104° to cross BRIKS at or below 13000, then on track 084° to cross AVOLS at 11000 and at 250K, then on track 085° to cross PACIF at 7000, then on track 085° to cross OCN VORTAC at 5000, then on track 085° . Expect RADAR vectors to ILS or LOC RWY 24 final approach course.

LANDING NFG: From LEGOZ on track 104° to cross BRIKS at or below 13000, then on track 084° to cross AVOLS at 11000 and at 250K, then on track 085° to cross PACIF at 7000, then on track 085° to cross OCN VORTAC at 5000, then on track 085° . Expect RNAV (GPS) RWY 21 approach or RADAR vectors to final approach course.

SW-3, 20 FEB 2025 to 20 MAR 2025

SW-3, 20 FEB 2025 to 20 MAR 2025