

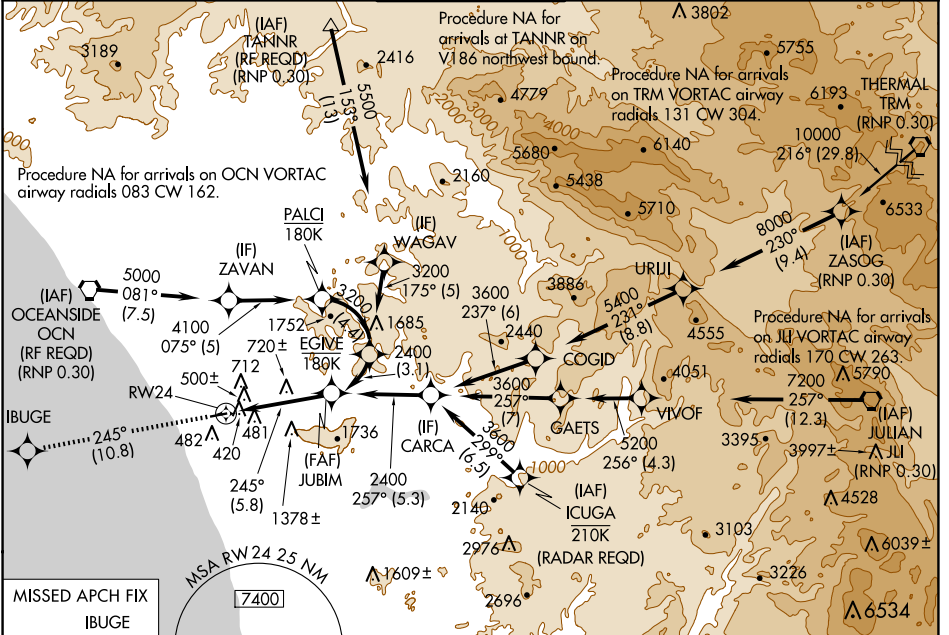
APP CRS 245°	Rwy Idg TDZE Apt Elev	4897 326 331
------------------------	-----------------------------	---

RNAV (RNP) Z RWY 24

MC CLELLAN-PALOMAR (CRQ)

For uncompensated Baro-VNAV systems, procedure NA below 1°C (34°F) or above 54°C (130°F). For inoperative MALS, increase RNP 0.10 visibility to RVR 6000 all Cats, RNP 0.30 visibility to 1% all Cats. GPS required.	MALS	MISSED APPROACH: Climb to 2000 on track 245° to IBUGE and hold.

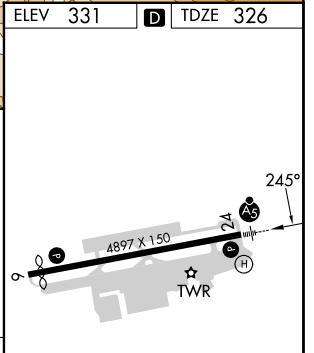
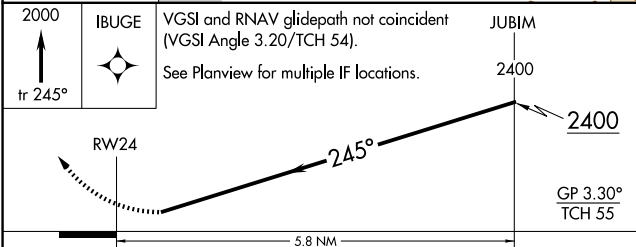
ATIS 120.15	SOCAL APP CON 127.3 323.0	PALOMAR TOWER* 118.6 (CTAF) 0 276.4	GND CON 121.8	CLNC DEL 134.85
-----------------------	-------------------------------------	--	-------------------------	---------------------------



SW-3, 20 FEB 2025 to 20 MAR 2025

SW-3, 20 FEB 2025 to 20 MAR 2025

MISSED APCH FIX IBUGE	ELEV 331	TDZE 326
--------------------------	----------	----------



CATEGORY	A	B	C	D
RNP 0.10 DA	810/50	484 (500-1)		NA
RNP 0.30 DA	931-1 $\frac{3}{8}$	605 (600-1 $\frac{3}{8}$)		NA

AUTHORIZATION REQUIRED

HIRL Rwy 6-24