

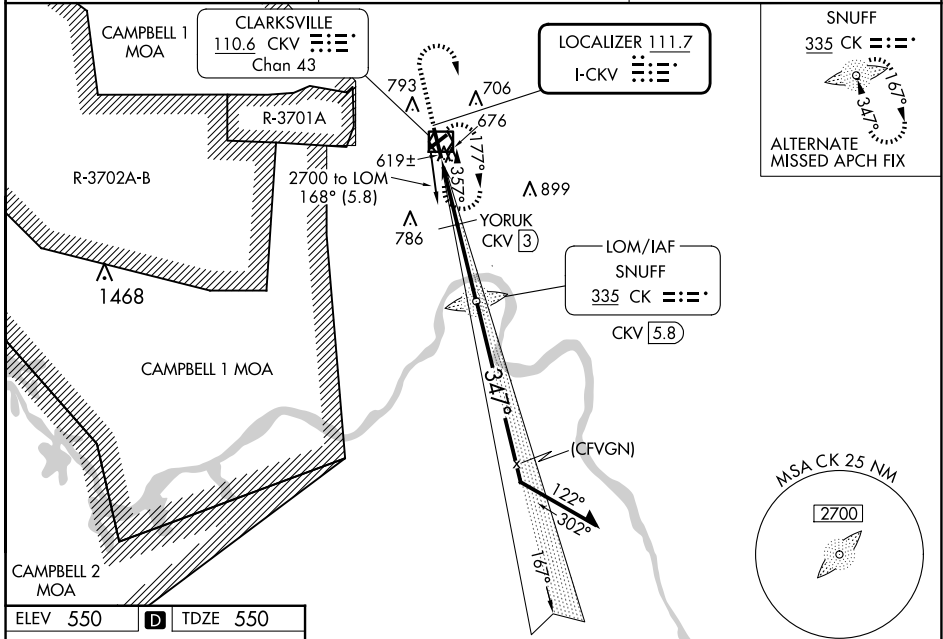
LOC I-CKV <b>111.7</b>	APP CRS <b>347°</b>	Rwy Idg TDZE Apt Elev	<b>5999</b> <b>550</b> <b>550</b>
---------------------------	------------------------	-----------------------------	---

# LOC RWY 35

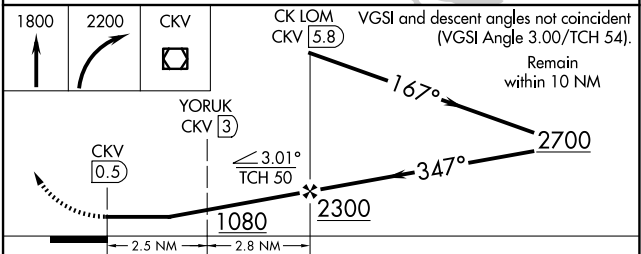
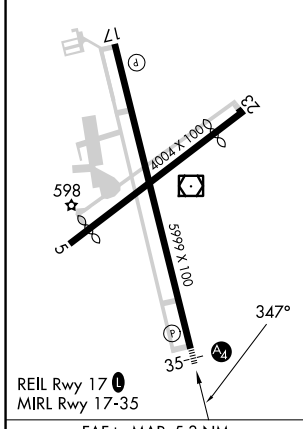
OUTLAW FLD (CKV)

ADF required. RADAR required.	MALS	MISSED APPROACH: Climb to 1800 then climbing right turn to 2200 direct CKV VOR/DME and hold.
<p>▼ Circling NA W of Rwy 17-35. Circling Rwy 5, 17, 23 NA at night. Rwy 35 helicopter visibility reduction below 3/4 SM NA. When local altimeter setting not received, use Campbell AAF (Fort Campbell) altimeter setting. * DME from CKV VOR/DME.</p>		

ASOS <b>134.575</b>	CAMPBELL APP CON <b>134.35 307.025</b>	UNICOM <b>122.8</b> (CTAF)
------------------------	---	-------------------------------



ELEV 550	<b>D</b>	TDZE 550
----------	----------	----------



CATEGORY	A	B	C	D
S-LOC 35	1080-3/4	530 (600-3/4)	1080-1 1/4	530 (600-1 1/4)
<b>C</b> CIRCLING	1080-1	530 (600-1)	1080-1 1/2	1200-2
			530 (600-1 1/2)	650 (700-2)
YORUK FIX MINIMUMS * (DME REQUIRED)				
S-LOC 35		880-3/4	330 (400-3/4)	
<b>C</b> CIRCLING	1000-1	1020-1	1020-1 1/2	1200-2
	450 (500-1)	470 (500-1)	470 (500-1 1/2)	650 (700-2)

SE-1, 20 FEB 2025 to 20 MAR 2025

SE-1, 20 FEB 2025 to 20 MAR 2025