

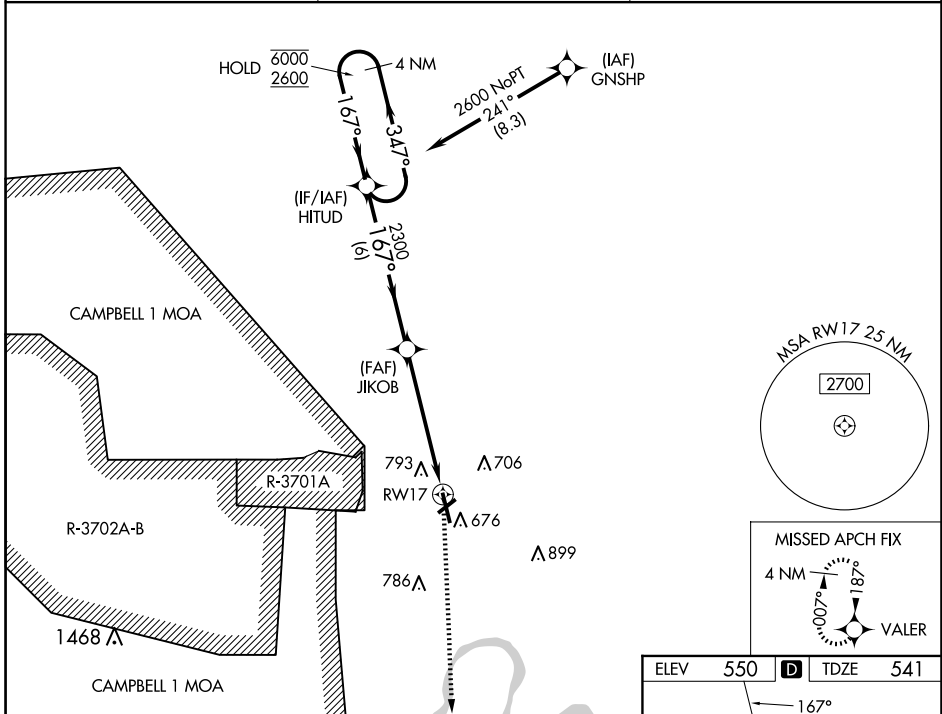
APP CRS	Rwy Idg	<b>5999</b>
<b>167°</b>	TDZE	<b>541</b>
	Apt Elev	<b>550</b>

# RNAV (GPS) RWY 17

OUTLAW FLD (CKV)

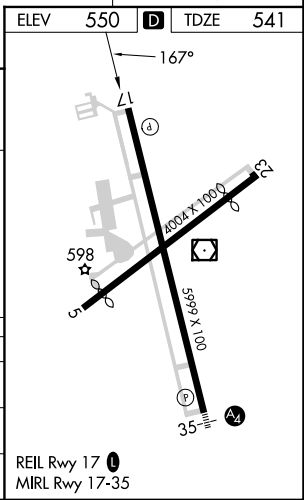
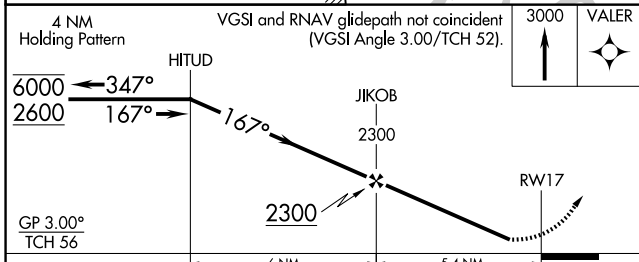
RNP APCH - GPS.	<p><b>▼</b> Circling NA W of Rwy 17-35. For uncompensated Baro-VNAV systems, LNAV/VNAV NA below -13°C or above 54°C. Rwy 17 helicopter visibility reduction below 1 SM NA. Straight-in Rwy 17 NA at night, Circling Rwy 17, 23 NA at night.</p>	<p><b>MISSED APPROACH:</b> Climb to 3000 direct VALER and hold.</p>
-----------------	---	---

ASOS <b>134.575</b>	CAMPBELL APP CON <b>134.35 307.025</b>	UNICOM <b>122.8 (CTAF) 0</b>
------------------------	---	---------------------------------



SE-1, 20 FEB 2025 to 20 MAR 2025

SE-1, 20 FEB 2025 to 20 MAR 2025



CATEGORY	A	B	C	D
LNAV/VNAV DA	991-1 $\frac{3}{8}$ 450 (500-1 $\frac{3}{8}$ )			
LNAV MDA	1060-1	519 (600-1)	1060-1 $\frac{3}{8}$	519 (600-1 $\frac{3}{8}$ )
<b>C</b> CIRCLING	1060-1	510 (600-1)	1060-1 $\frac{1}{2}$	1200-2 650 (700-2)