

NDB PVC	APP CRS	Rwy Idg	<b>3502</b>
<b>389</b>	<b>247°</b>	TDZE	<b>8</b>
		Apt Elev	<b>8</b>

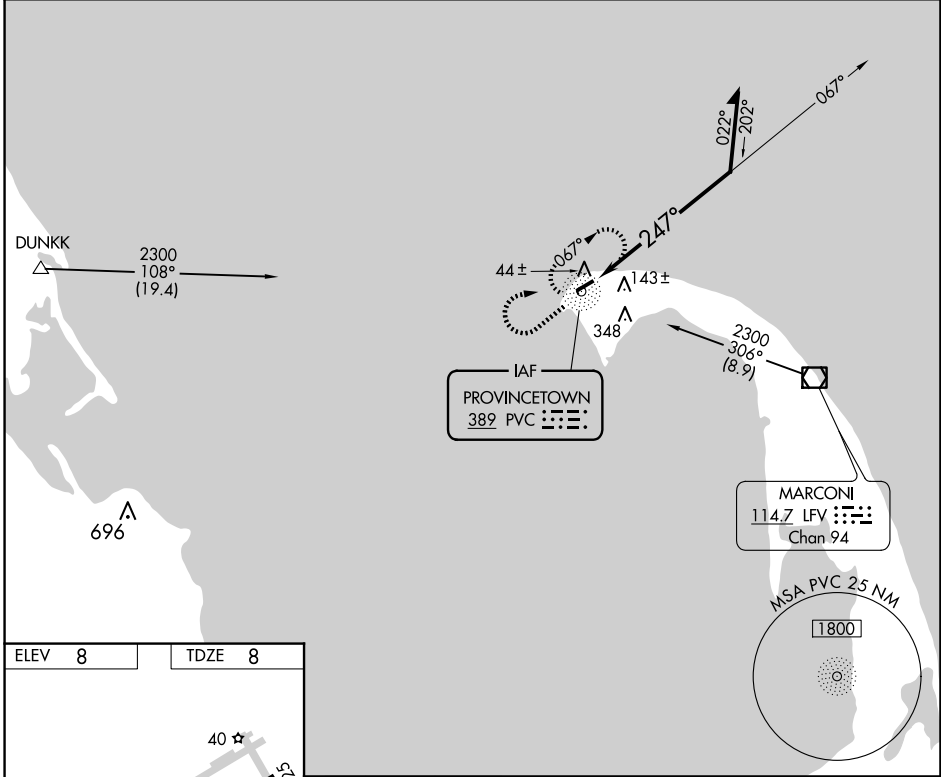
# NDB RWY 25

PROVINCETOWN MUNI (PVC)

**⚠** Rwy 25 helicopter visibility reduction below 1 SM NA. Straight-in Rwy 25 NA at night, Circling Rwy 25 NA at night. When local altimeter setting not received, use Hyannis altimeter setting and increase all MDA 80 feet.

**⚠** MISSED APPROACH: Climb to 800 then climbing right turn to 2300 direct PVC NDB and hold.

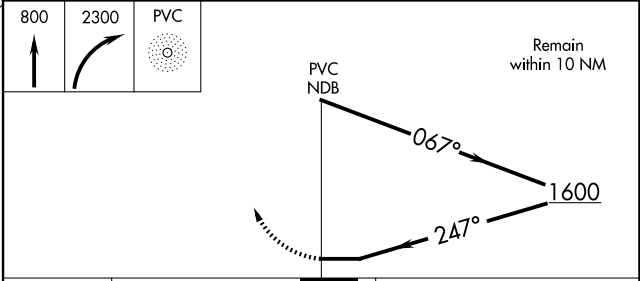
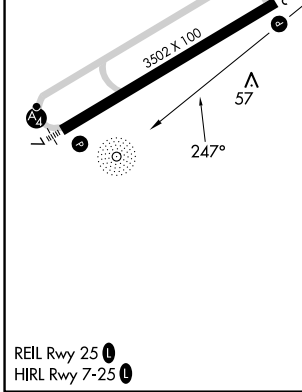
AWOS-3PT	BOSTON APP CON	CLNC DEL	UNICOM	
<b>119.275</b>	<b>118.2</b>	<b>120.65</b>	<b>122.8</b> (CTAF)	<b>122.85</b> <b>0</b>



NE-1, 20 FEB 2025 to 20 MAR 2025

NE-1, 20 FEB 2025 to 20 MAR 2025

ELEV	<b>8</b>	TDZE	<b>8</b>
------	----------	------	----------



CATEGORY	A	B	C	D
S-25	500-1	492 (500-1)		NA
<b>C</b> CIRCLING	500-1	660-1		NA
	492 (500-1)	652 (700-1)		