

# LINDBERGH EIGHT DEPARTURE

AL-5316 (FAA)

ST LOUIS DOWNTOWN (CPS)  
CAHOKIA/ST. LOUIS, ILLINOIS

ATIS  
121.45  
CLNC DEL  
118.275  
CLNC DEL  
121.8 (when twr closed)  
GND CON  
121.8  
DOWNTOWN TOWER\*  
119.925 379.3  
ST LOUIS DEP CON  
123.7 371.875

**TOP ALTITUDE:  
2500**

ST. LOUIS  
117.4 STL :...  
Chan 121

VICHY  
117.7 VIH :...  
Chan 124

FARMINGTON  
115.7 FAM :...  
Chan 104

LITTLE ROCK  
113.9 LIT :...  
Chan 86

WALNUT RIDGE  
114.5 ARG :...  
Chan 92

### TAKEOFF MINIMUMS

Rwys 12L/R, 23, 30R: Standard.  
Rwy 5: 200-1¼ or standard with minimum climb of 343' per NM to 700.  
Rwy 30L: 400-2½ or standard with minimum climb of 220' per NM to 900, or alternatively, with standard takeoff minimums and a normal 200' per NM climb gradient, takeoff must occur no later than 2100' prior to DER.

NOTE: DME and RADAR required.

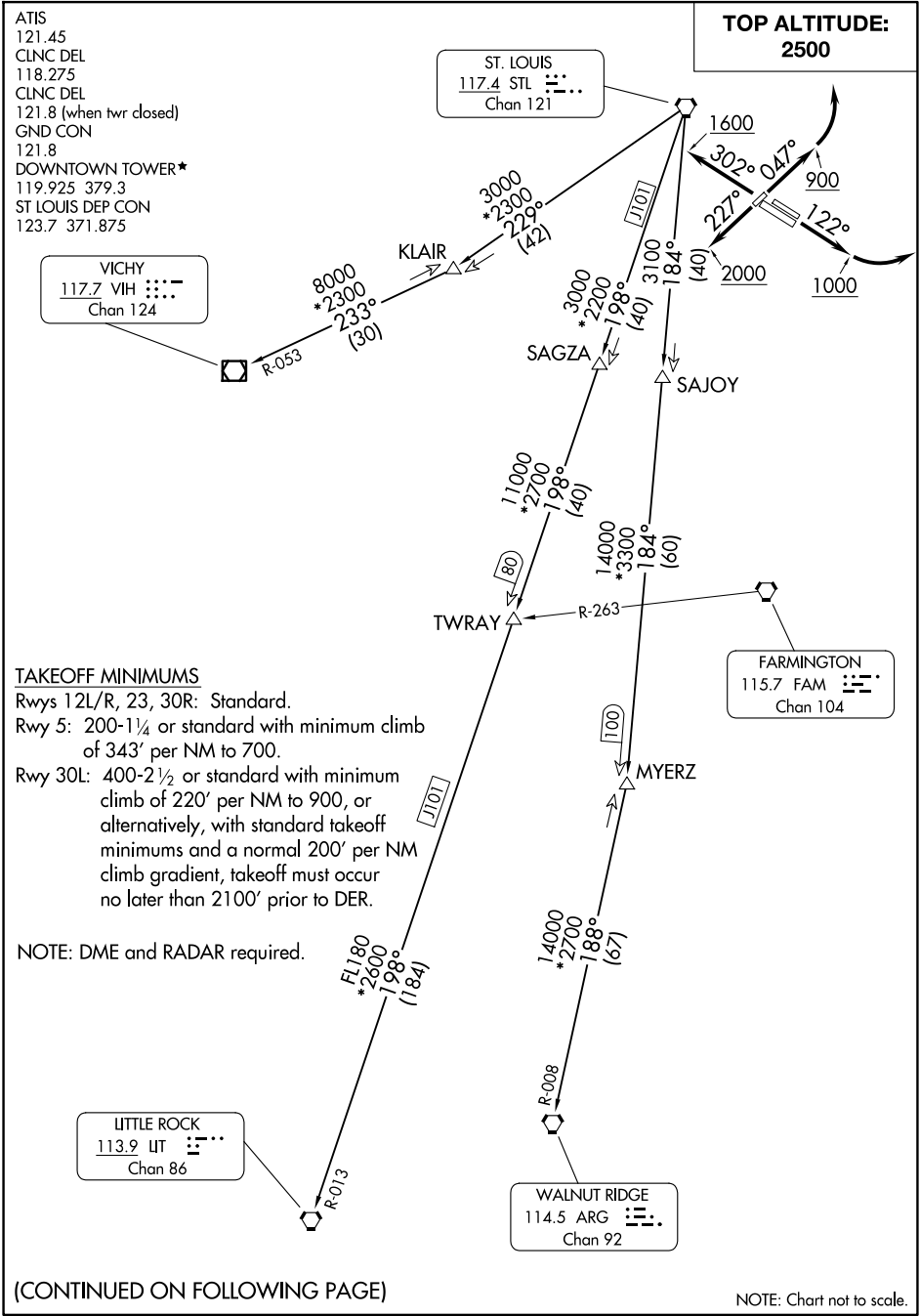
(CONTINUED ON FOLLOWING PAGE)

NOTE: Chart not to scale.

# LINDBERGH EIGHT DEPARTURE

EC-3, 20 FEB 2025 to 20 MAR 2025

EC-3, 20 FEB 2025 to 20 MAR 2025





DEPARTURE ROUTE DESCRIPTION

TAKEOFF RUNWAY 5: Climb heading 047° to 900 before turning left, then climb and maintain 2500 or assigned altitude. Expect vector to appropriate route, thence . . . .

TAKEOFF RUNWAYS 12L/R: Climb heading 122° to 1000 before turning left, then climb and maintain 2500 or assigned altitude. Expect vector to appropriate route, thence . . . .

TAKEOFF RUNWAY 23: Climb heading 227° to 2000 before turning, then climb and maintain 2500 or assigned altitude. Expect vector to appropriate route, thence . . . .

TAKEOFF RUNWAYS 30L/R: Climb heading 302° to 1600 before turning, then climb and maintain 2500 or assigned altitude. Expect vector to appropriate route, thence . . . .

. . . . (transition). Expect filed altitude 10 minutes after departure.

LITTLE ROCK TRANSITION (LINDY8.LIT): From over STL VORTAC on STL R-198 to TWRAY, then on STL R-198 and LIT R-013 to LIT VORTAC.

MYERZ TRANSITION (LINDY8.MYERZ): From over STL VORTAC on STL R-184 to MYERZ.

VICHY TRANSITION (LINDY8.VIH): From over STL VORTAC on STL R-229 to KLAIR, then on VIH R-053 to VIH VOR/DME.

WALNUT RIDGE TRANSITION (LINDY8.ARG): From over STL VORTAC on STL R-184 to MYERZ, then on ARG R-008 to ARG VORTAC.

EC-3, 20 FEB 2025 to 20 MAR 2025

EC-3, 20 FEB 2025 to 20 MAR 2025