

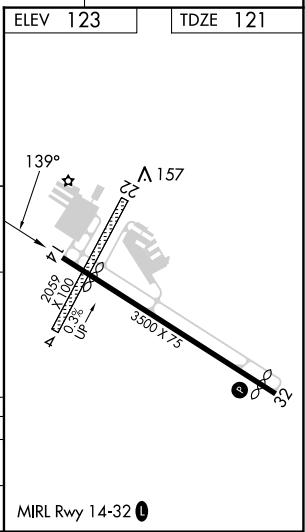
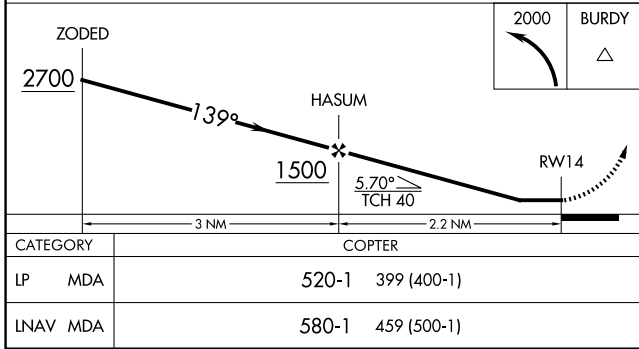
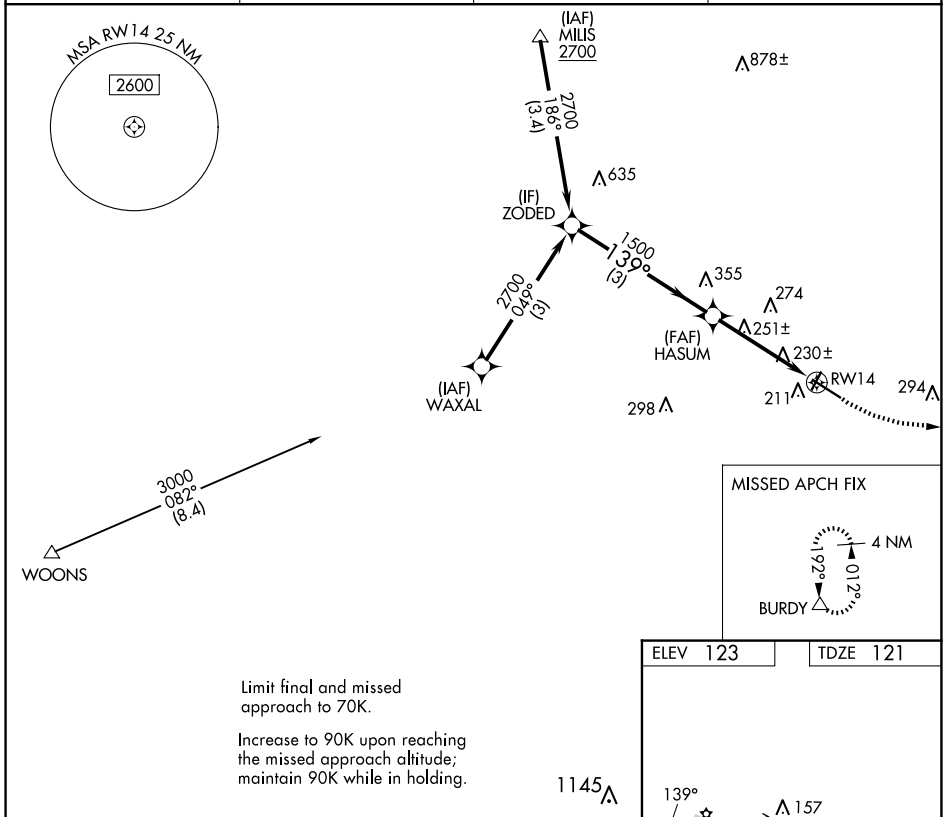
WAAS CH 50444 W14B	APP CRS 139°	Rwy ldg 2991
	TDZE 121	
	Apt Elev 123	

COPTER RNAV (GPS) Y RWY 14

MANSFIELD MUNI (1B9)

RNP APCH - GPS.	MISSED APPROACH: Climbing left turn to 2000 direct BURDY and hold.
Procedure NA at night. Use Taunton altimeter setting.	

AWOS-3PT 118.675	TAN ASOS 132.675	BOSTON APP CON 124.1	UNICOM 123.0 (CTAF)
----------------------------	----------------------------	--------------------------------	-------------------------------



NE-1, 20 FEB 2025 to 20 MAR 2025

NE-1, 20 FEB 2025 to 20 MAR 2025