

|   |                        |                             |   |
|---|------------------------|-----------------------------|---|
| VORTAC OVR<br><b>116.3</b><br>Chan <b>110</b> | APP CRS<br><b>142°</b> | Rwy ldg<br>TDZE<br>Apt Elev | <b>3439</b><br><b>964</b><br><b>971</b> |
|---|------------------------|-----------------------------|---|

# VOR/DME RWY 12

SHENANDOAH MUNI (SDA)

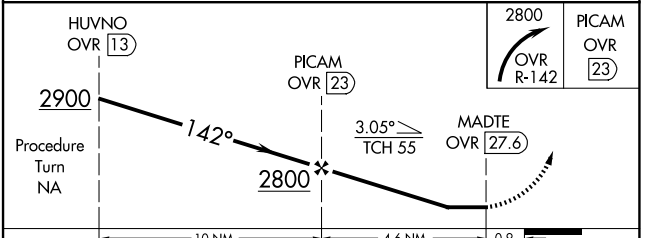
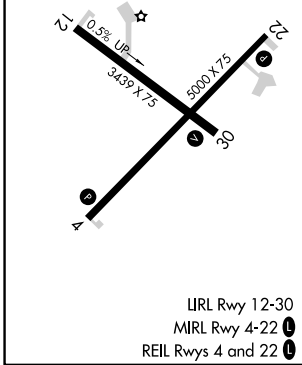
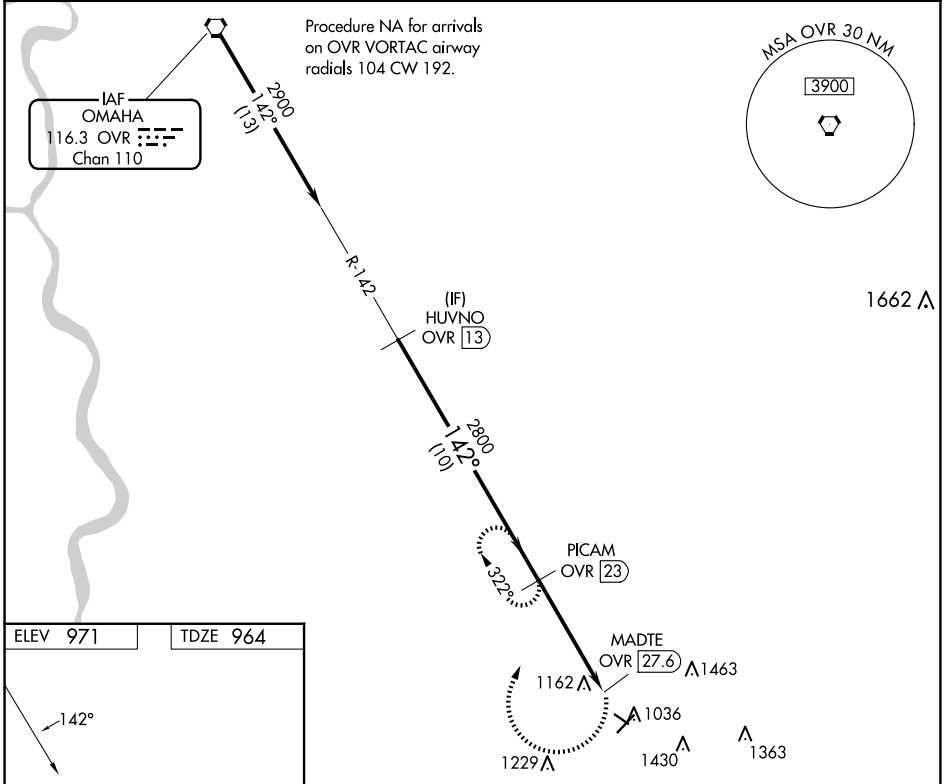
**⚠** Rwy 12 helicopter visibility reduction below 3/4 SM NA. When local altimeter setting not received, use Clarinda altimeter setting and increase all MDA 60 feet. Circling Rwy 30 NA at night.

**⚠** MISSED APPROACH: Climbing right turn to 2800 on OVR VORTAC R-142 to PICAM/OVR 23 DME and hold.

AWOS-3  
**125.525**

OMAHA APP CON  
**124.5 263.0**

UNICOM  
**122.8** (CTAF) **0**



| CATEGORY          | A                             | B                             | C | D  |
|-------------------|-------------------------------|-------------------------------|---|----|
| S-12              | 1620-1 1/8                    | 656 (700-1 1/8)               |   | NA |
| <b>C</b> CIRCLING | 1620-1 1/8<br>649 (700-1 1/8) | 1620-1 1/4<br>649 (700-1 1/4) |   | NA |

NC-3, 20 FEB 2025 to 20 MAR 2025

NC-3, 20 FEB 2025 to 20 MAR 2025