

LOC I-UV D 111.7	APP CRS 092°	Rwy ldg TDZE Apt Elev	5600 418 452
----------------------------	------------------------	-----------------------------	---

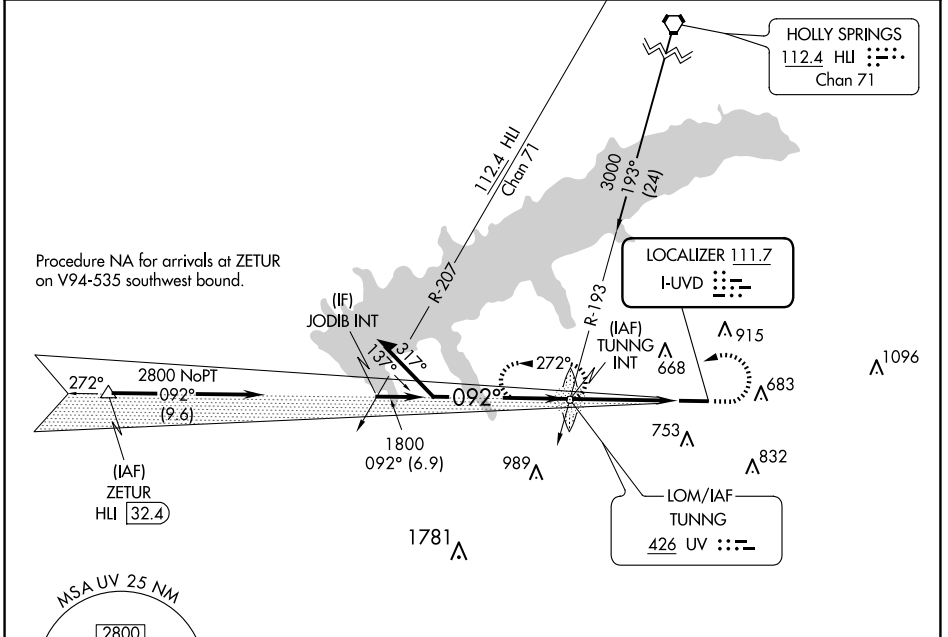
LOC Z RWY 9

UNIVERSITY-OXFORD (UOX)

NA ADF required. When local altimeter setting not received, use Olive Branch altimeter setting and increase all MDA 100 feet; increase S-LOC Cats C, D visibility $\frac{3}{8}$ mile and Circling Cat C visibility $\frac{1}{4}$ mile.

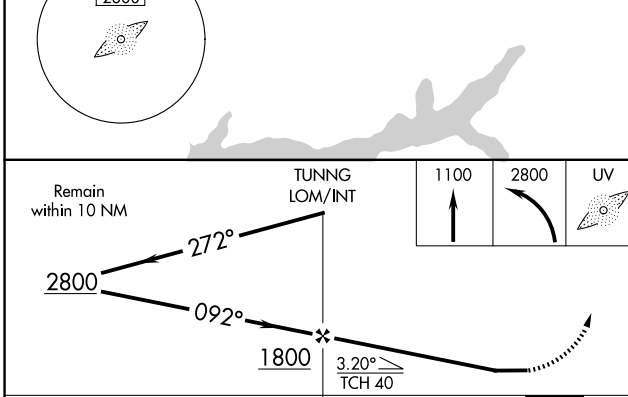
MISSED APPROACH: Climb to 1100 then climbing left turn to 2800 direct TUNNG LOM/INT and hold, continue climb-in-hold to 2800.

AWOS-3PT 132.725	MEMPHIS CENTER 128.5 279.55	GCO 135.075	UNICOM 123.0 (CTAF)
----------------------------	---------------------------------------	-----------------------	-------------------------------



SC-4, 20 FEB 2025 to 20 MAR 2025

SC-4, 20 FEB 2025 to 20 MAR 2025



ELEV 452	TDZE 418
MIRL Rwy 9-27	
REIL Rwys 9 and 27	
FAF to MAP 4 NM	
Knots	60 90 120 150 180
Min:Sec	4:00 2:40 2:00 1:36 1:20

CATEGORY	A	B	C	D
S-LOC 9	920-1	502 (500-1)	920-1 $\frac{3}{8}$	502 (500-1 $\frac{3}{8}$)
C CIRCLING	980-1 528 (600-1)	1060-1 608 (700-1)	1380-2 $\frac{3}{4}$ 928 (1000-2 $\frac{3}{4}$)	1380-3 928 (1000-3)