

| | | |
|-------------|----------|-------------|
| APP CRS | Rwy Idg | 6492 |
| 292° | TDZE | 23 |
| | Apt Elev | 23 |

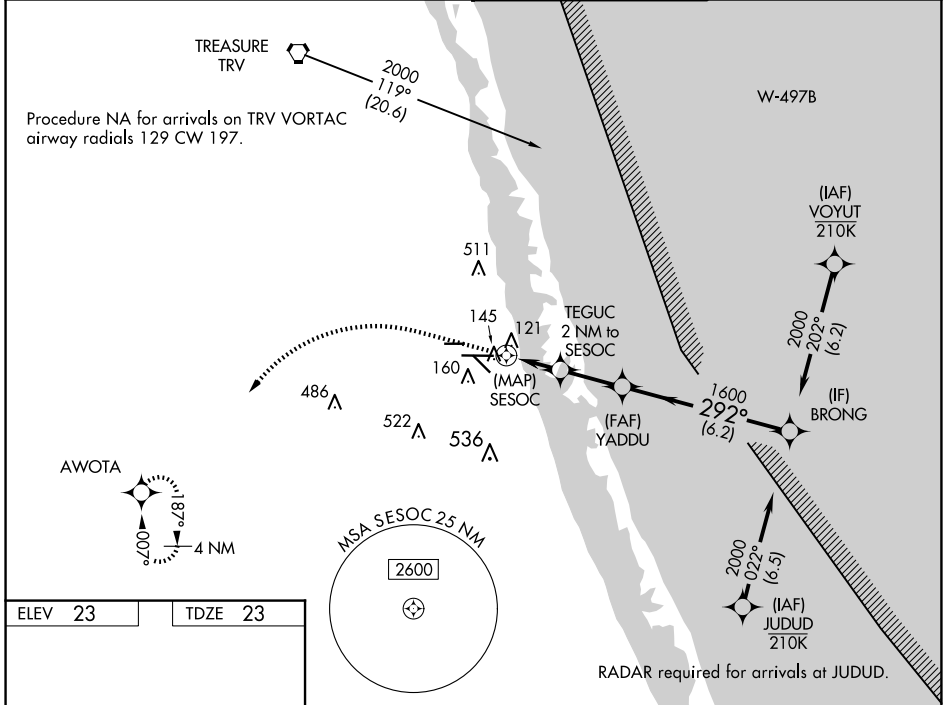
RNAV (GPS) RWY 28L

TREASURE COAST INTL (FPR)

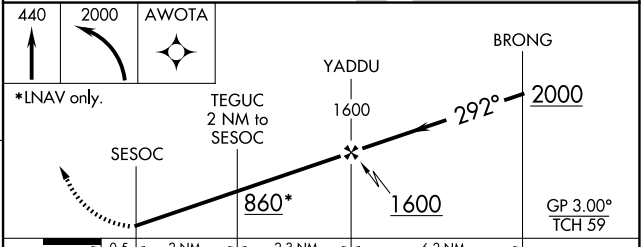
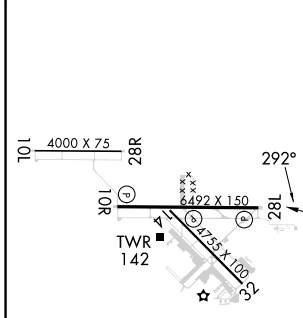
▼ Helicopter visibility reduction below $\frac{3}{4}$ SM NA. For uncompensated Baro-VNAV systems, LNAV/VNAV NA below -15°C (5°F) or above 43°C (109°F). DME/DME RNP-0.3 NA. **▲** When local altimeter setting not received, use Vero Beach altimeter setting and increase LNAV/VNAV DA to 435 feet and MDA 40 feet; increase LNAV/VNAV visibility all Cats and LNAV visibility Cats C/D $\frac{1}{8}$ SM. Increase Circling visibility Cat C/D $\frac{1}{4}$ SM. Baro-VNAV NA when using local altimeter setting.

MISSED APPROACH: Climb to 440 then climbing left turn to 2000 direct AWOTA and hold.

| | | | |
|------------------------|------------------------------------|--|--------------------------------|
| ATIS 134,825 | PALM BEACH APP CON 132.8 | FORT PIERCE TOWER ★ 128.2 (CTAF) 0 | GND CON (GCO) 119,55 |
|------------------------|------------------------------------|--|--------------------------------|



| | |
|---------|---------|
| ELEV 23 | TDZE 23 |
|---------|---------|



| | | | | | |
|-------------------|----------------------|----------------------|---|---|--|
| | 0.5 | 2 NM | 2.3 NM | 6.2 NM | |
| CATEGORY | A | B | C | D | |
| LNAV/VNAV DA | | 412-1 $\frac{1}{4}$ | 389 (400-1 $\frac{1}{4}$) | | |
| LNAV MDA | | 400-1 | 377 (400-1) | | |
| C CIRCLING | 460-1 437 (500-1) | 480-1 457 (500-1) | 880-2 $\frac{1}{2}$ 857 (900-2 $\frac{1}{2}$) | 880-2 $\frac{3}{4}$ 857 (900-2 $\frac{3}{4}$) | |

SE-3, 20 FEB 2025 to 20 MAR 2025

SE-3, 20 FEB 2025 to 20 MAR 2025