

WAAS CH 99729 W32A	APP CRS 323°	Rwy ldg TDZE Apt Elev	4755 23 23
--	------------------------	-----------------------------	---------------------------------------

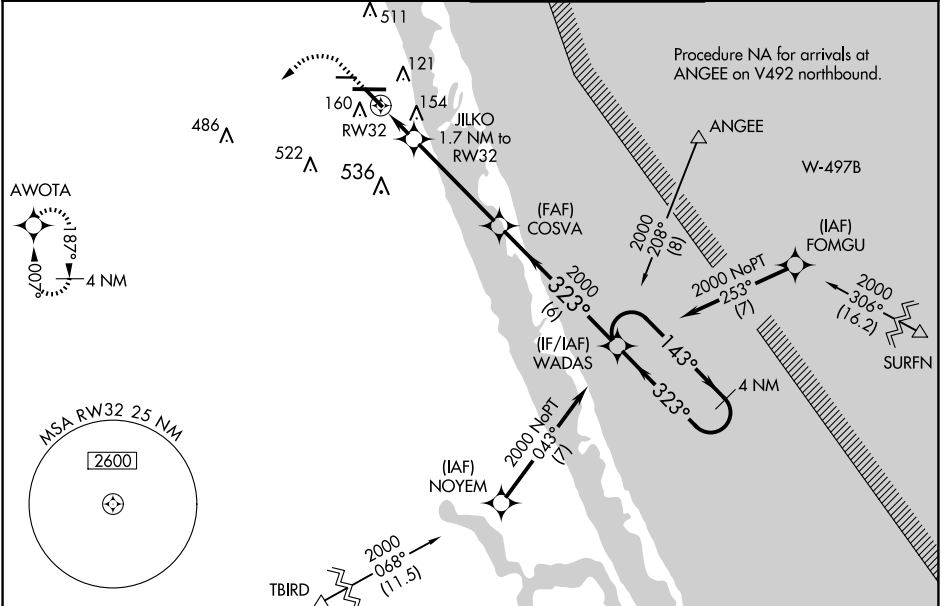
RNAV (GPS) RWY 32

TREASURE COAST INTL (FPR)

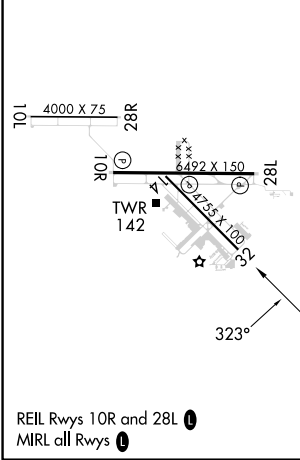
⚠ For uncompensated Baro-VNAV systems, LNAV/VNAV NA below -15C (5°F) or above 43°C (109°F). DME/DME RNP-0.3 NA. When local altimeter setting not received, use Vero Beach altimeter setting and increase LPV DA to 325, LNAV/VNAV DA to 329 feet and MDA 40 feet; increase LPV all Cats, LNAV/VNAV all Cats, and LNAV Cats C/D visibility ½ SM. Increase Circling visibility Cat C/D ¼ SM. Baro-VNAV NA when using Vero Beach altimeter setting.

⚠ MISSED APPROACH: Climb to 520 then climbing left turn to 2000 direct AWOTA and hold.

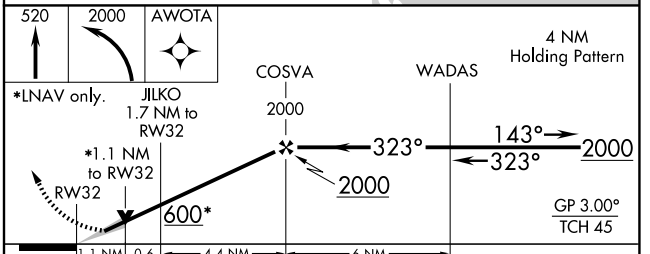
ATIS 134.825	PALM BEACH APP CON 132.8	FORT PIERCE TOWER * 128.2 (CTAF)	GND CON (GCO) 119.55
------------------------	------------------------------------	--	--------------------------------



ELEV 23	TDZE 23
---------	---------



Procedure NA for arrivals at TBIRD on V159 southbound and V531 northeast bound.



CATEGORY	A	B	C	D
LPV DA		302-7/8	279 (300-7/8)	
LNAV/VNAV DA		306-7/8	283 (300-7/8)	
LNAV MDA	420-1	397 (400-1)	420-1 1/8	397 (400-1 1/8)
C CIRCLING	460-1 437 (500-1)	480-1 457 (500-1)	880-2 1/2 857 (900-2 1/2)	880-2 3/4 857 (900-2 3/4)

SE-3, 20 FEB 2025 to 20 MAR 2025

SE-3, 20 FEB 2025 to 20 MAR 2025