

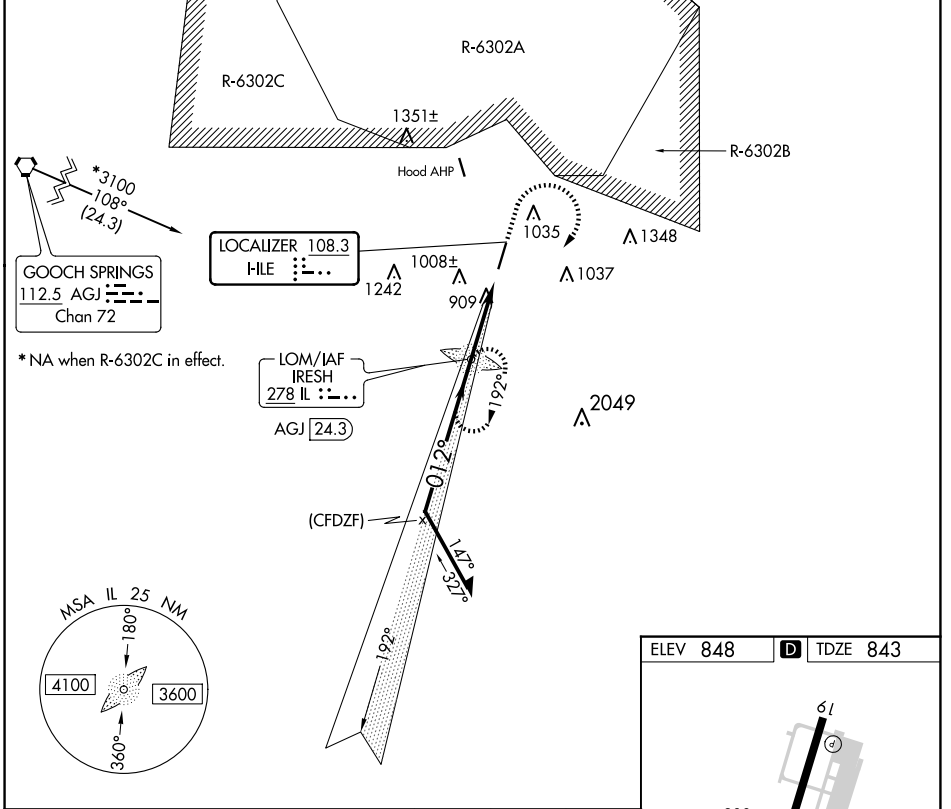
LOC ILE 108.3	APP CRS 012°	Rwy Idg TDZE Apt Elev	4641 843 848
-------------------------	------------------------	-----------------------------	---

LOC RWY 1

SKYLARK FLD (I.L.E.)

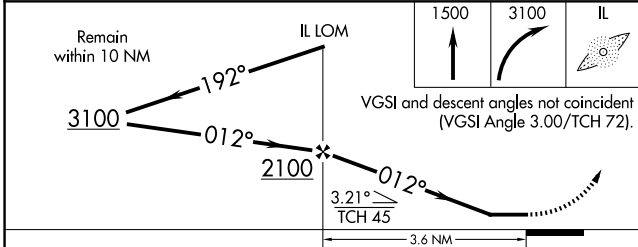
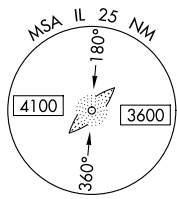
ADF required.		MISSED APPROACH: Climb to 1500 then climbing right turn to 3100 direct IRESH LOM and hold, continue climb-in-hold to 3100.
▼ NA	Circling Rwy 19 NA at night.	

AWOS-3PT 128.575	GRAY APP CON 120.075 323.15	CLNC DEL 121.7	UNICOM 122.7 (CTAF) 0
----------------------------	---------------------------------------	--------------------------	---------------------------------



SC-3, 20 FEB 2025 to 20 MAR 2025

SC-3, 20 FEB 2025 to 20 MAR 2025



ELEV 848	D	TDZE 843
----------	---	----------

The diagram shows the layout of Runway 1 and Runway 19. Runway 1 is 5495 feet long and 100 feet wide. Runway 19 is 61 feet wide. The diagram also shows the location of the runway relative to the approach path.

REIL Rwy 1 and 19	MIRL Rwy 1-19 0
-------------------	-----------------

FAF to MAP 3.6 NM					
Knots	60	90	120	150	180
Min:Sec	3:36	2:24	1:48	1:26	1:12

CATEGORY	A	B	C	D
S-1	1160-1	317 (400-1)		NA
CIRCLING	1300-1 452 (500-1)	1340-1 492 (500-1)	1440-1½ 592 (600-1½)	NA