

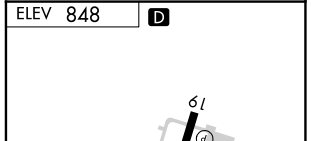
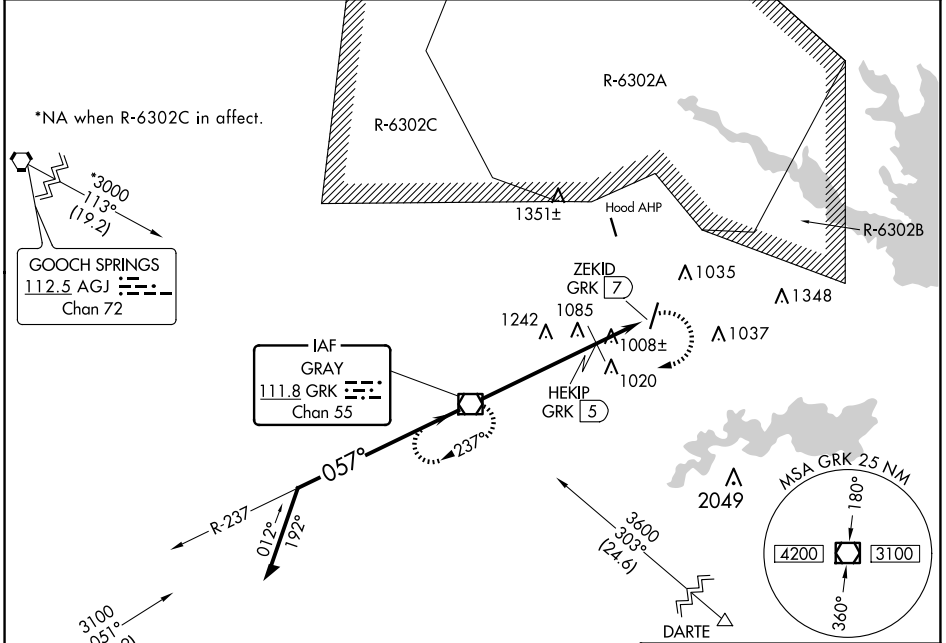
VOR/DME GRK <b>111.8</b> Chan <b>55</b>	APP CRS <b>057°</b>	Rwy Idg TDZE Apt Elev <b>848</b>	N/A N/A <b>848</b>
---	------------------------	--	--------------------------

**VOR-A**  
SKYLARK FLD (IL,E)

**NA** Circling Rwy 19 NA at night.  
When local altimeter setting not received, use Robert Gray AAF allimeter setting and increase all MDA 60 feet.

MISSED APPROACH: Climbing right turn to 3000 direct GRK VOR/DME and hold.

AWOS-3PT <b>128.575</b>	GRAY APP CON <b>120.075 323.15</b>	CLNC DEL <b>121.7</b>	UNICOM <b>122.7</b> (CTAF) <b>D</b>
----------------------------	---------------------------------------	--------------------------	--



HEKIP FIX MINIMUMS (DME REQUIRED)	A	B	C	D
<b>CIRCLING</b>	1620-1 772 (800-1)	1620-1¼ 772 (800-1¼)	1620-2¼ 772 (800-2¼)	NA
<b>CIRCLING</b>	1320-1 472 (500-1)	1360-1 512 (600-1)	1440-1½ 592 (600-1½)	NA

FAF to MAP 7 NM					
Knots	60	90	120	150	180
Min:Sec	7:00	4:40	3:30	2:48	2:20

SC-3, 20 FEB 2025 to 20 MAR 2025

SC-3, 20 FEB 2025 to 20 MAR 2025