

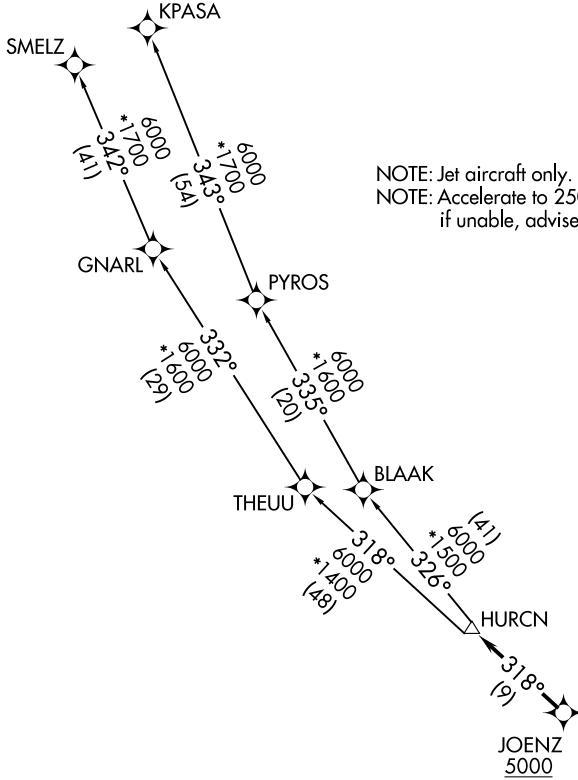
HURCN FOUR DEPARTURE (RNAV)

RNAV-1 DME/DME/IRU or GPS.

RADAR required.

**TOP ALTITUDE:
ASSIGNED BY ATC**

MIAMI DEP CON
125.5 354.1
ATIS
124.0
CLNC DEL
133.0
GND CON
121.7
MIAMI EXEC TOWER*
118.9 (CTAF)



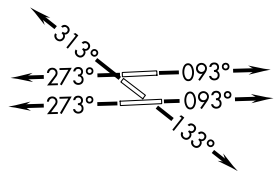
NOTE: Jet aircraft only.
NOTE: Accelerate to 250K until leaving 10000,
if unable, advise ATC.

SE-3, 20 FEB 2025 to 20 MAR 2025

SE-3, 20 FEB 2025 to 20 MAR 2025

TAKEOFF MINIMUMS

- Rwy 9L: Standard with minimum climb of 500'/NM to 1300.
- Rwy 9R: Standard with minimum climb of 500'/NM to 1500.
- Rwy 13: Standard with minimum climb of 500'/NM to 1800.
- Rwy 27L: Standard with minimum climb of 500'/NM to 1900.
- Rwy 27R: Standard with minimum climb of 500'/NM to 1700.
- Rwy 31: Standard with minimum climb of 500'/NM to 1400.



NOTE: Chart not to scale.

(CONTINUED ON FOLLOWING PAGE)

HURCN FOUR DEPARTURE (RNAV)



DEPARTURE ROUTE DESCRIPTION

TAKEOFF RUNWAYS 9L/R: Climb on heading 093° or as assigned by ATC for RADAR vectors to cross JOENZ at or above 5000, thence. . .

TAKEOFF RUNWAY 13: Climb on heading 133° or as assigned by ATC for RADAR vectors to cross JOENZ at or above 5000, thence. . .

TAKEOFF RUNWAYS 27L/R: Climb on heading 273° or as assigned by ATC for RADAR vectors to cross JOENZ at or above 5000, thence. . .

TAKEOFF RUNWAY 31: Climb on heading 313° or as assigned by ATC for RADAR vectors to cross JOENZ at or above 5000, thence. . .

. . .on track 318° to HURCN, then on transition. Maintain ATC assigned altitude. Expect clearance to filed altitude within 10 minutes after departure.

KPASA TRANSITION (HURCN4.KPASA)

SMELZ TRANSITION (HURCN4.SMELZ)

SE-3, 20 FEB 2025 to 20 MAR 2025

SE-3, 20 FEB 2025 to 20 MAR 2025