

LOC I-TMB <b>108.7</b>	APP CRS <b>093°</b>	Rwy Idg <b>6000</b> TDZE <b>10</b> Apt Elev <b>10</b>
---------------------------	------------------------	---

# ILS or LOC RWY 9R

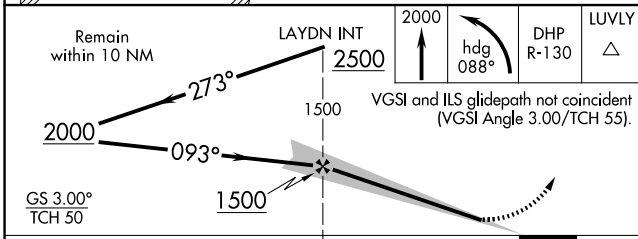
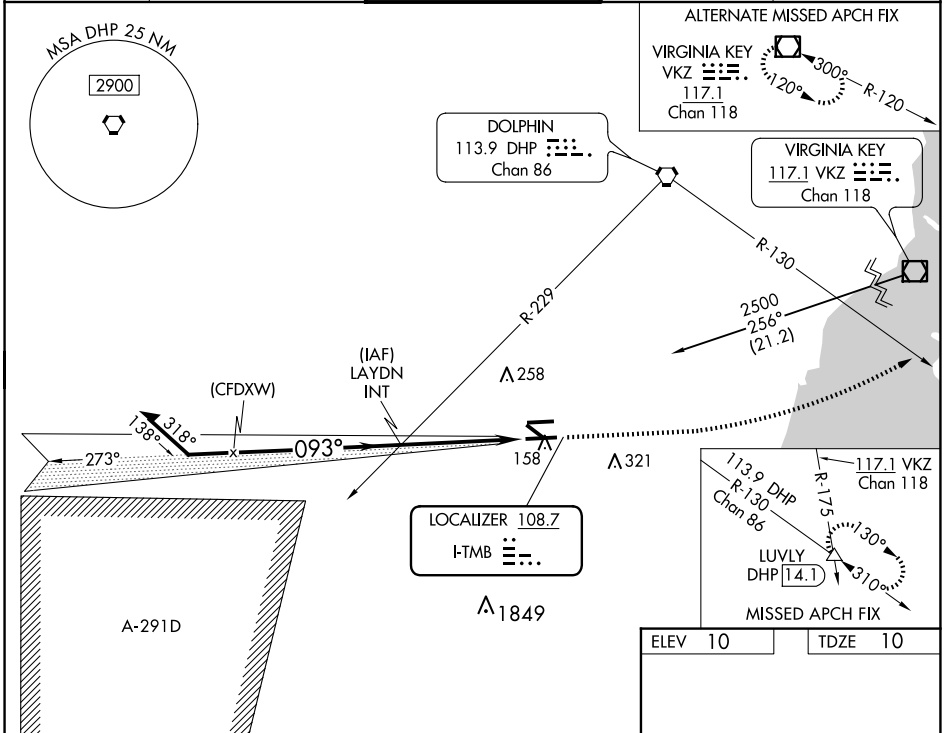
MIAMI EXEC (TMB)

**⚠** Circling Rwy 13, 31 NA at night. For inop ALS when using Miami Intl altimeter setting, increase Cat C/D visibility to 1 3/8 SM. When local altimeter setting not received, use Miami Intl altimeter setting and increase S-ILS 9R DA to 237 feet and all MDA 40 feet, increase S-LOC 9R Cat C/D visibility 1/8 SM.

**MALSR**  
A5

**MISSED APPROACH:** Climb to 2000 then left turn on heading 088° and DHP VORTAC R-130 to LUVLY INT/DHP 14.1 DME and hold.

ATIS <b>124.0</b>	MIAMI APP CON <b>125.5 354.1</b>	MIAMI EXEC TOWER* <b>118.9 (CTAF)</b> <b>0</b>	GND CON <b>121.7</b>	CLNC DEL <b>133.0</b>
----------------------	-------------------------------------	---	-------------------------	--------------------------



ELEV 10	TDZE 10
---------	---------

REIL Rwy 13  
HIRL Rwy 9R-27L **0**  
MIRL Rwy 9L-27R  
MIRL Rwy 13-31 **0**

FAF to MAP 4.5 NM

Knots	60	90	120	150	180
Min:Sec	4:30	3:00	2:15	1:48	1:30

SE-3, 20 FEB 2025 to 20 MAR 2025

SE-3, 20 FEB 2025 to 20 MAR 2025