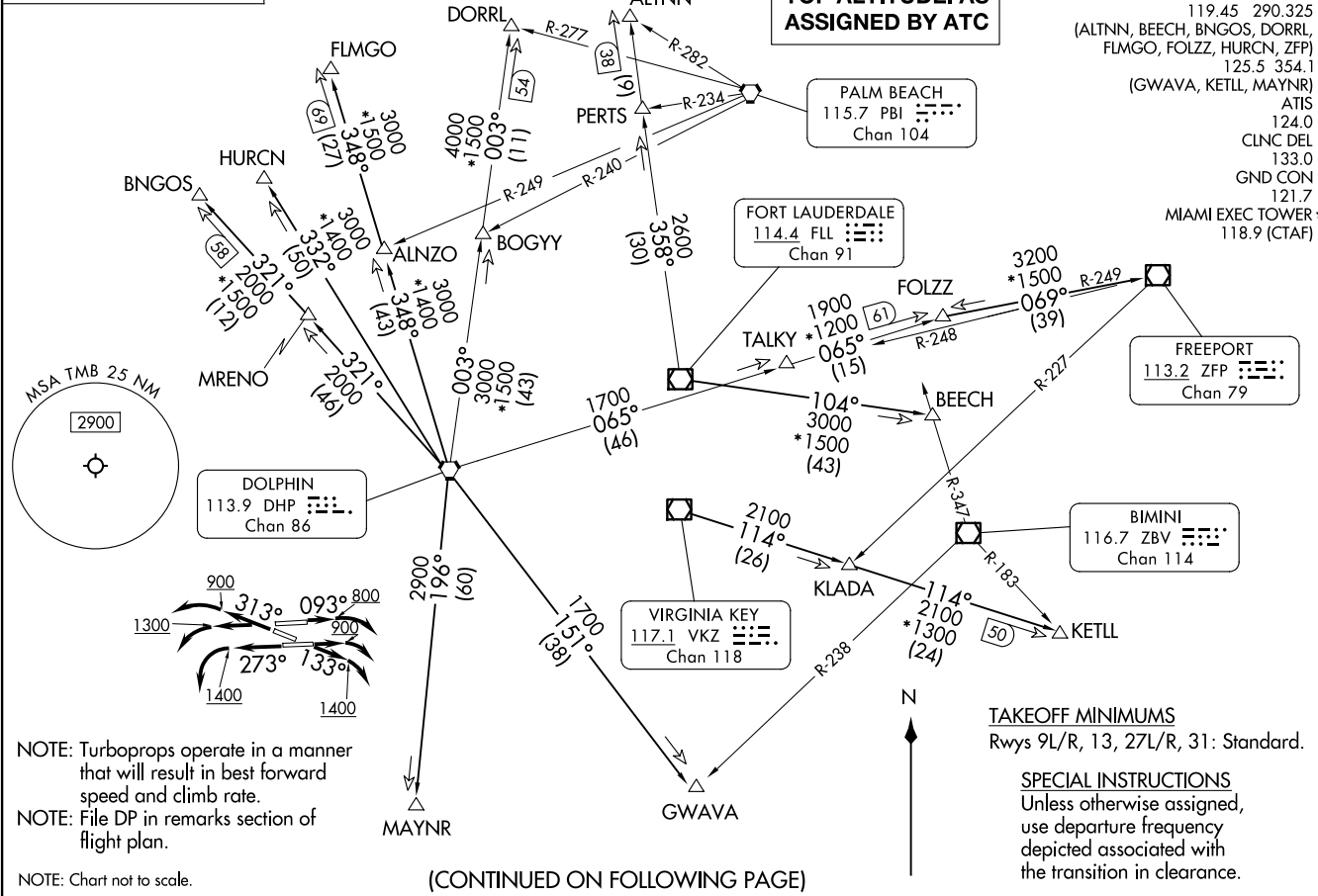


(MIA2.MIA) 26DEC24

MIAMI TWO DEPARTURE

RADAR and DME required.

TOP ALTITUDE: AS ASSIGNED BY ATC



MIAMI DEP CON
119.45 290.325
(ALTNN, BEECH, BNGOS, DORRL,
FLMGO, FOLZZ, HURCN, ZFP)
125.5 354.1
(GWAVA, KETLL, MAYNR)
ATIS
124.0
CLNC DEL
133.0
GND CON
121.7
MIAMI EXEC TOWER *
118.9 (CTAF)

(MIA2.MIA) 26DEC24
MIAMI TWO DEPARTURE

AL-5349 (FAA)

MIAMI EXEC (TMB)
MIAMI, FLORIDA

NOTE: Turboprops operate in a manner that will result in best forward speed and climb rate.
NOTE: File DP in remarks section of flight plan.

TAKEOFF MINIMUMS
Rwys 9L/R, 13, 27L/R, 31: Standard.

SPECIAL INSTRUCTIONS
Unless otherwise assigned, use departure frequency depicted associated with the transition in clearance.

NOTE: Chart not to scale.

(CONTINUED ON FOLLOWING PAGE)

MIAMI, FLORIDA
MIAMI EXEC (TMB)

MIAMI TWO DEPARTURE



DEPARTURE ROUTE DESCRIPTION

- TAKEOFF RUNWAY 9L: Climb on heading 093° to 800 before turning right, thence...
- TAKEOFF RUNWAY 9R: Climb on heading 093° to 900 before turning right, thence...
- TAKEOFF RUNWAY 13: Climb on heading 133° to 1400 before turning right, thence...
- TAKEOFF RUNWAY 27L: Climb on heading 273° to 1400 before turning left, thence...
- TAKEOFF RUNWAY 27R: Climb on heading 273° to 1300 before turning left, thence...
- TAKEOFF RUNWAY 31: Climb on heading 313° to 900 before turning left, thence...

... on transition, maintain ATC assigned altitude. Expect filed altitude 10 minutes after departure.

ALTNN TRANSITION (MIA2.ALTNN): From over FLL VOR/DME on FLL R-358 to ALTNN.

BEECH TRANSITION (MIA2.BEECH): From over FLL VOR/DME on FLL R-104 to BEECH.

BNGOS TRANSITION (MIA2.BNGOS): From over DHP VORTAC on DHP R-321 to BNGOS.

DORRL TRANSITION (MIA2.DORRL): From over DHP VORTAC on DHP R-003 to DORRL.

FLMGO TRANSITION (MIA2.FLMGO): From over DHP VORTAC on DHP R-348 to FLMGO.

FOLZZ TRANSITION (MIA2.FOLZZ): From over DHP VORTAC on DHP R-065 to FOLZZ.

FREEMPT TRANSITION (MIA2.ZFP): From over DHP VORTAC on DHP R-065 to FOLZZ then on ZFP R-249 to ZFP VOR/DME.

GWAVA TRANSITION (MIA2.GWAVA): From over DHP VORTAC on DHP R-151 to GWAVA.

HURCN TRANSITION (MIA2.HURCN): From over DHP VORTAC on DHP R-332 to HURCN.

KETLL TRANSITION (MIA2.KETLL): From over VKZ VOR/DME on VKZ R-114 to KETLL.

MAYNR TRANSITION (MIA2.MAYNR): From over DHP VORTAC on DHP R-196 to MAYNR.

SE-3, 20 FEB 2025 to 20 MAR 2025

SE-3, 20 FEB 2025 to 20 MAR 2025